



EMV 330 CARD READER UPGRADE

TDN 07103-10182 Rev. C

Corporate Headquarters

21405 B Street
Long Beach, MS 39560
Phone: (800) 259-6672
Fax: (228) 575-3101

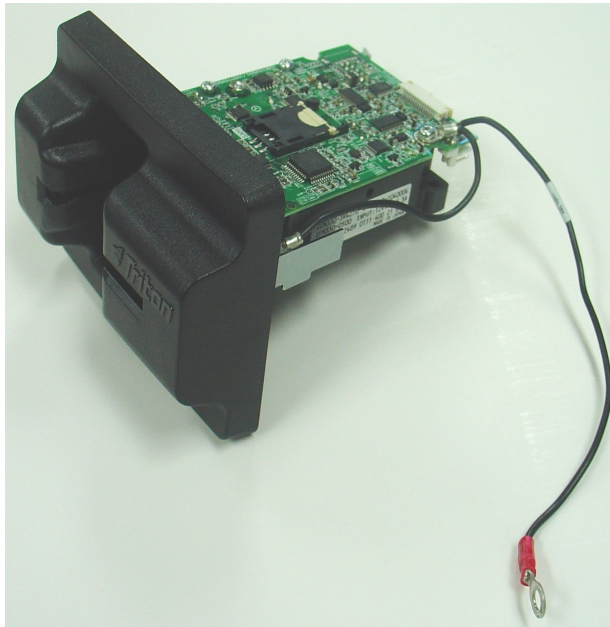
COPYRIGHT NOTICE

© 2016 Triton. All Rights Reserved. TRITON logo is a registered trademark of Triton Systems of Delaware, LLC

Document Updates

January 16, 2013	Original
March 5, 2013	ARGO added
July 3, 2013	Removed reference to US
August 28, 2013	Software Dependency updated & RT2/FT5 added
October 18, 2013	Added 330 to title, updated pictures & corrected ARGO
February 27, 2014	Added Section 5 - 9100/Z180 upgrade
July 8, 2014	Added 9700 to Section 5 & added 9600 Section 6

These kits include a Sankyo ICM330 EMV compliant card reader, bezel, and applicable cable for each ATM model. The card reader includes an additional ground wire. Ensure the card reader and cabinet grounds are joined. Use the angle bracket as necessary to make ground connections.



Improper grounding may cause damage to ATM and/or components.

FIELD CONVERSION PROCEDURE

TABLE OF CONTENTS

INTRODUCTION 4
SCOPE 4
SOFTWARE DEPENDENCY 4
UNIT CONFIGURATIONS 5
TOOLS 5
KIT NOTES 5
CARD READER CABLE CONNECTIONS 5
SECTION 1 **RLxx, ARGO, X1 / X2** **KIT NUMBER 06200-00347** 1-1
SECTION 2 **RL51xx, XSCALE** **KIT NUMBER 06200-00348** 2-1
SECTION 3 **TRAVERSE** **KIT NUMBER 06200-00349** 3-1
SECTION 4 **RT2, FT5, XSCALE AND X2** **KIT NUMBER 06200-00340/00341** 4-1
SECTION 5 **9100, Z180, 9700** **KIT NUMBER 06200-00352** 5-1
SECTION 5B **9100** **KIT NUMBER 06200-00388/00389**5B-1
SECTION 6 **9600** **KIT NUMBER 06200-00252** 6-1

INTRODUCTION

This guide covers the steps for replacing your current card reader with a new EMV certified model. These procedures include a list of all tools and hardware necessary for the replacement as well as the steps involved.

SCOPE

These procedures apply to all VERIFIED TRITON TRAINED service personnel involved in the process of maintaining or converting Triton ATMs.

APPLICATION

The EMV card reader should be used with a PCI Compliant SPED. If you have any questions contact Triton Technical Support.

SOFTWARE DEPENDENCY

It is possible that your unit **will not** recognize the new EMV card reader with your current software. The most current software and Release Notes are available for your unit on the Triton web site (<http://www.Tritonatm.com>) or contact Triton Technical Support. The software listed below will not only recognize the card reader, but is also EMV capable. Affix the EMV sticker to the inside of the top cabinet area. On the left next to the white identification sticker is suggested. When Host/Processors initiate the use of EMV, call Triton Technical Support for instructions on ATM activation.

RL X2 (Kit 06200-00347)

Canada (DC)	2.4.2 SP5
Canada	3.2.0
Mexico	2.5.4
South Africa	2.6.2
UK	3.2.0b
US	3.2.0

RL XScale (Kit 06200-00348)

Canada	3.2.0
Mexico	2.5.4
UK	3.2.0
US	3.2.0

RT/FT X2 (Kit 06200-00340)

Canada	3.2.0
UK	3.2.0b
US	3.2.0

RT/FT XScale (Kit 06200-00341)

Canada	3.2.0
Mexico	2.5.4
UK	3.2.0
US	3.2.0

ARGO (Kit 06200-00347)

Canada	3.3.0
US	3.3.0

Traverse (Kit 06200-00349)

Canada	3.2.0
US	3.2.0

9xxx (Kit 06200-08190)

Canada	7.2
UK	7.2
US	7.3

UNIT CONFIGURATIONS

Due to production, refurbishment, update, or repair differences, your unit **may vary** in hardware, or cable color, length, and routing, as compared to the examples given. These instructions are **representative** of the upgrade for each type of unit. Your units **appearance may vary**.

TOOLS

The use of magnetic implements may be helpful in the removal and replacement of the card reader hardware.

KITS

Due to the versatility of the kits, there **may** be parts that are **not** used in your particular unit.

NOTE:

Place the appropriate EMV compliance sticker in the upper part of the cabinet. On the left side below the identification sticker is suggested.

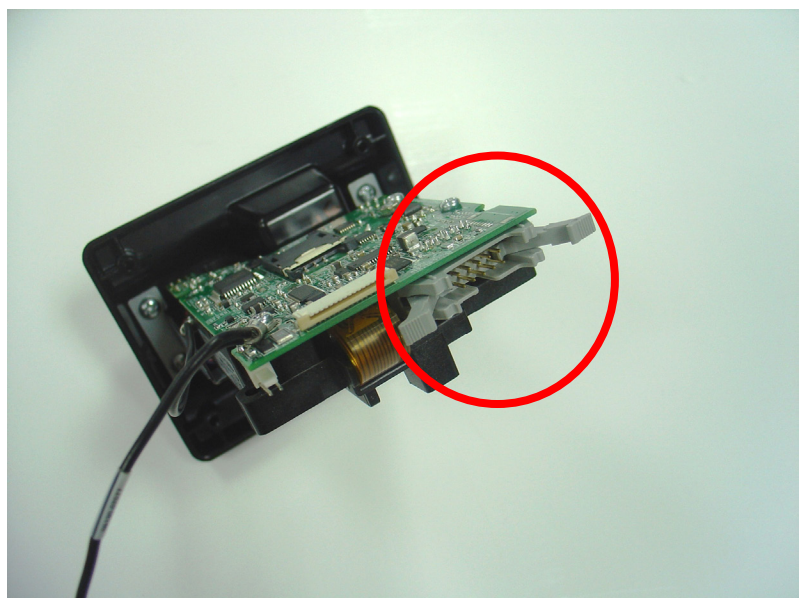


Card Reader Cable Connection:

The black cable connector is “keyed” so will only fit one way into the grey card reader connector.

Press the connector in fully until the two side clips snap into place.

Ensure the clips are closed, securing the connector.



SECTION 1

EMV 330 CARD READER

UPGRADE

RL1613 / RL23XX / ARGO/ RL5XXX

X1 & X2 PLATFORM

KIT 06200-00533

EMV 330 CARD READER UPGRADE PROCEDURES

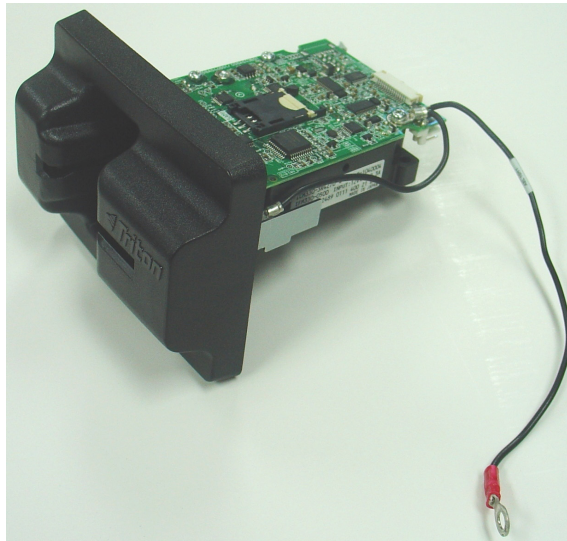
REQUIRED PARTS AND TOOLS

TOOLS REQUIRED	#1 & #2 Philips screwdriver with a 6 in. shank, ESD wrist strap with grounding cord
KIT 06200-00533	Field Replacement Kit

RL1600, RL2k, ARGO, RL5k X1 & X2

Description	Qty
Serial card reader comms ribbon cable, X2	1
Screw #6-19 x3/8 phillips drive pan plastite 48-2 zinc plate	5
Sankyo 330 Card reader w/ software key & Bezel	1
Mounting bracket, angled, one 6-32 threaded hole, one 0.165" open hole, 0.062" thick steel, tin plate	1
Screw#6-32 1/4 Inch Pan Phil Head w/Ext Tooth Wash ROHS	1
EMV ICM330 Card Reader Cable, X-scale	1
Screw#8-32 3/8 Inch Pan Phil Head w/Ext Tooth Wash RoHS	1

This kit includes a Sankyo ICM330 EMV compliant card reader, bezel, and applicable cable for each ATM model. The card reader includes an attached ground wire. Ensure the card reader and cabinet grounds are joined.



Improper grounding may cause damage to ATM and/or components.

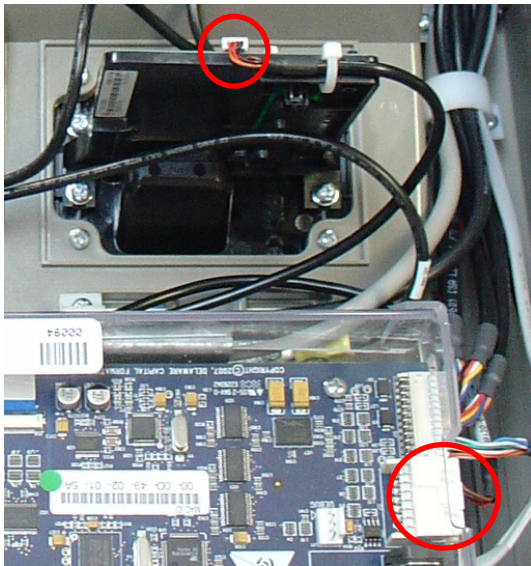
SECTION ONE

RL1613 REMOVE AND REPLACE PROCEDURES

Before proceeding, follow these steps to remove power from the ATM:

Enter **Management Functions > System Parameters > Shut Down the Terminal > Enter**. When prompted, turn power **OFF** on the ATMs power supply. Unlock and open the ATM control panel. Turn the power switch to the OFF (0) position. If possible, unplug the ATM power cord at the wall outlet. Put on the ESD strap and attach the cord to the ground.

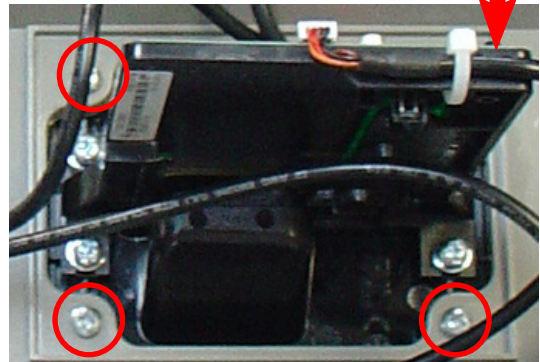
1. Refer to the applicable service manual for your unit for steps to remove and replace the card reader. Remove the outer 4 (four) screws only. Ensure you are holding the card reader as you remove the last screw to avoid dropping it.
2. Ensure the old cables are removed from the old card reader and main board, and the new cables are connected properly to the new card reader and main board.
3. Refer to the pictures below for illustrative instructions and routing of any cables.



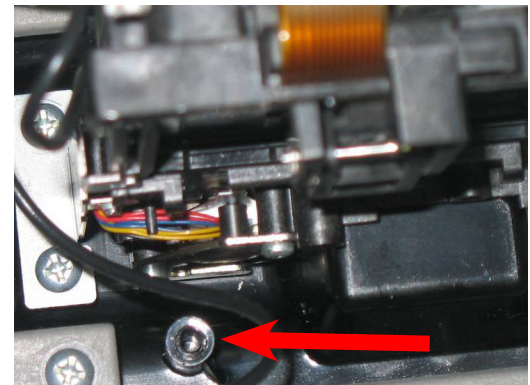
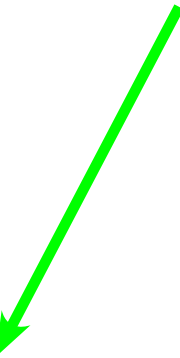
◆ Disconnect and remove the card reader to main board cable.



- ◆ Install card reader as shown and secure with 4 (four) screws provided.
- ◆ Install and connect the new card reader cable.



◆ Remove the 4 (four) corner screws retaining the card reader. (upper right hidden)



◆ with the screw provided attach EMV card reader and cabinet grounds to this point.



Improper grounding may cause damage to ATM and/or components.



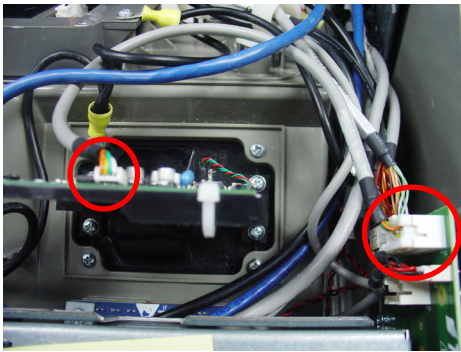
EMV 330 CARD READER UPGRADE PROCEDURES

RL2k X2 & ARGO REMOVE AND REPLACE PROCEDURES

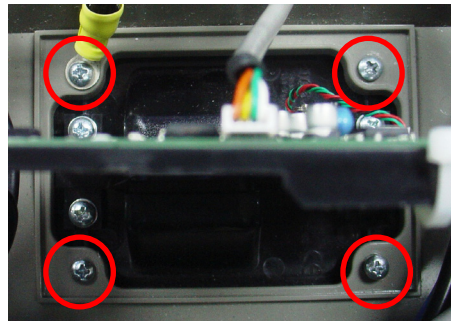
Before proceeding, follow these steps to remove power from the ATM:

Enter **Management Functions > System Parameters > Shut Down the Terminal > Enter**. When prompted, turn power **OFF** on the ATMs power supply. Unlock and open the ATM control panel. Turn the power switch to the OFF (0) position. If possible, unplug the ATM power cord at the wall outlet.

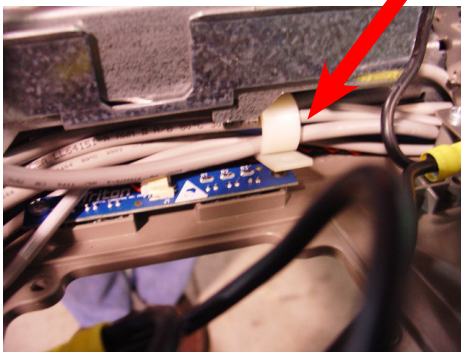
1. Refer to the applicable service manual for your unit for steps to remove and replace the card reader. Remove the outer 4 (four) screws only. Ensure you are holding the card reader as you remove the last screw to avoid dropping it.
2. Ensure the old cables are removed from the old card reader and mother/docking board, and the new cables are connected properly to the new card reader and mother/docking board.
3. Refer to the pictures below for illustrative instructions and routing of any cables.



◆Disconnect the card reader to docking board cable. The docking board end has a safety clip. RL2k shown.



◆Remove the 4 (four) corner screws retaining the card reader.

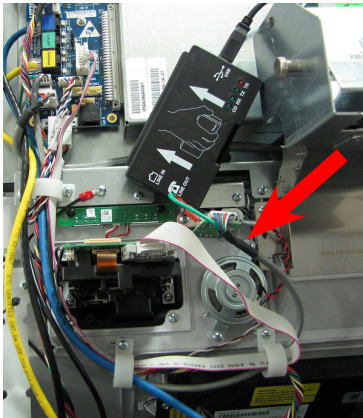


◆Under the main board, remove the screw securing the cable clip. Retain the screw.
◆Carefully remove the old card reader to docking board cable.
◆ARGO Carefully remove the old card reader to docking board cable from the clips at the side of the card reader and docking board.
◆Remove the card reader.

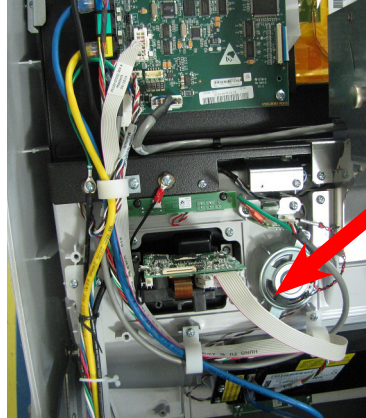


◆Install new card reader as shown and secure with 4 (four) screws provided.

SECTION ONE



ARGO 12

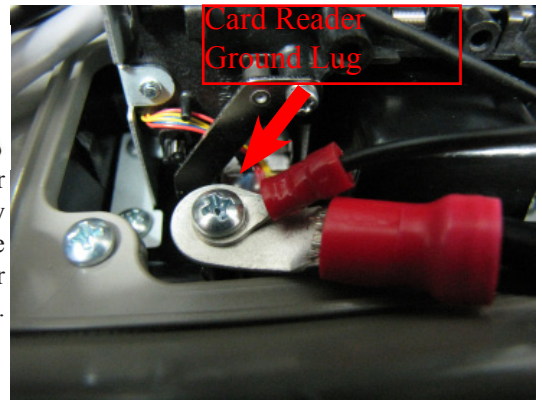


ARGO 7

- ◆ Fold the new card reader cable in half and install under the cable clip.
- ◆ Secure the clip with the screw previously removed.
- ◆ Route the cable through the clips as shown.



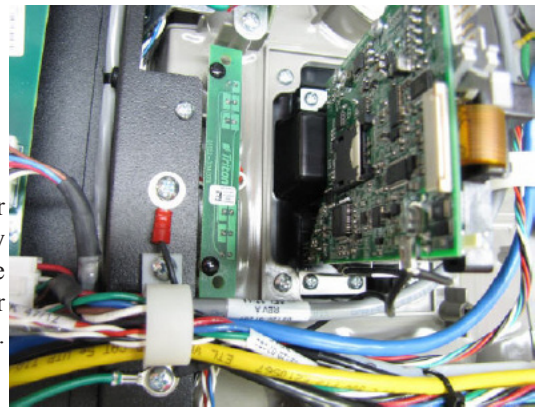
Improper grounding may cause damage to ATM and/or components.



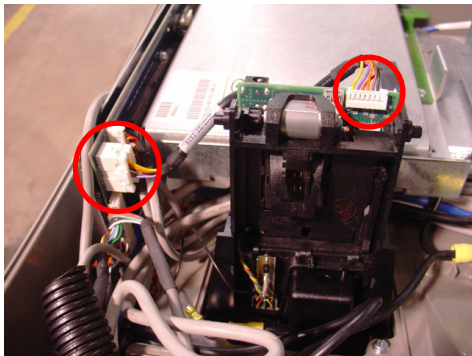
- ◆ Connect card reader ground cables and original cabinet ground to the ground lug on the card reader. RL2k



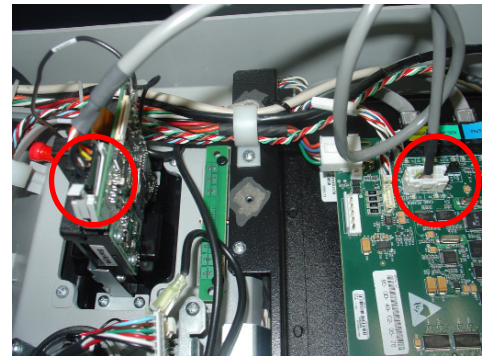
Improper grounding may cause damage to ATM and/or components.



- ◆ Connect card reader ground cable. ARGO 7



- ◆ Connect the new card reader cable to the card reader and the docking board. RL2k



- ◆ Connect the new card reader cable to the card reader and the docking board. ARGO 7

4. Upon completion of the upgrade, perform the card reader test in the diagnostics area of your service manual, and return the unit to service.

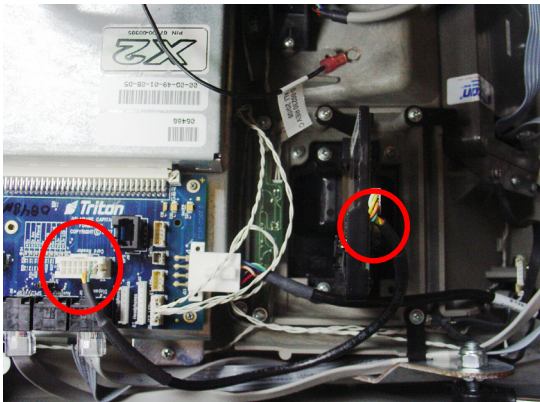
EMV 330 CARD READER UPGRADE PROCEDURES

RL5K X2 REMOVE AND REPLACE PROCEDURES

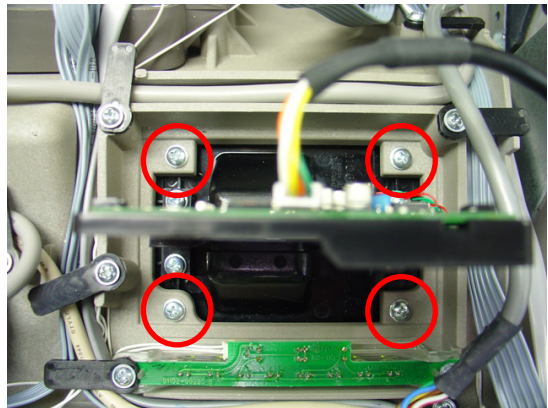
Before proceeding, follow these steps to remove power from the ATM:

Enter **Management Functions > System Parameters > Shut Down the Terminal > Enter**. When prompted, turn power **OFF** on the ATMs power supply. Unlock and open the ATM control panel. Turn the power switch to the OFF (0) position. If possible, unplug the ATM power cord at the wall outlet. Put on the ESD strap and attach the cord to the ground

1. Refer to the applicable service manual for your unit for steps to remove and replace the card reader. Remove the outer 4 (four) screws only. Ensure you are holding the card reader as you remove the last screw to avoid dropping it.
2. Ensure the old cables are removed from the old card reader and docking board, and the new cables are connected properly to the new card reader and docking board.
3. Refer to the pictures below for illustrative instructions and routing of any cables.



◆ Disconnect and remove the card reader to docking board cable. The docking board end has a safety clip.



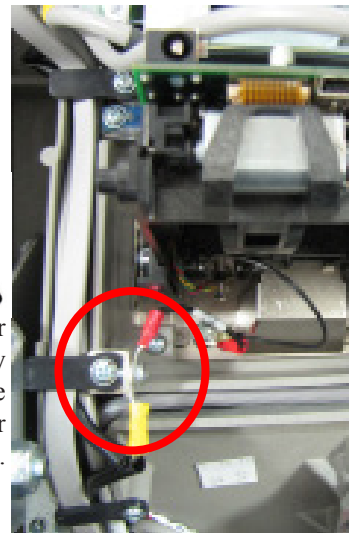
◆ Remove the 4 (four) screws retaining the card reader and any ground cable.



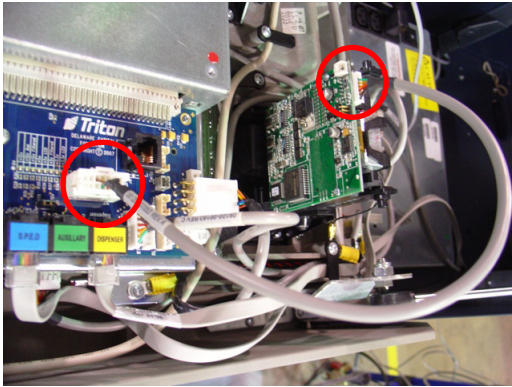
◆ Install card reader as shown and secure with 4 (four) screws provided.



Improper grounding may cause damage to ATM and/or components.



◆ Remove the ground screw and cable retainer, and attach the card reader ground cables using the angle bracket.



◆ Connect the new cable to the card reader and the docking board.

4. Upon completion of the upgrade, perform the card reader test in the diagnostics area of your service manual, and return the unit to service.

SECTION 2

EMV 330 CARD READER

UPGRADE

RL51XX

XSCALE PLATFORM

KIT 06200-00348

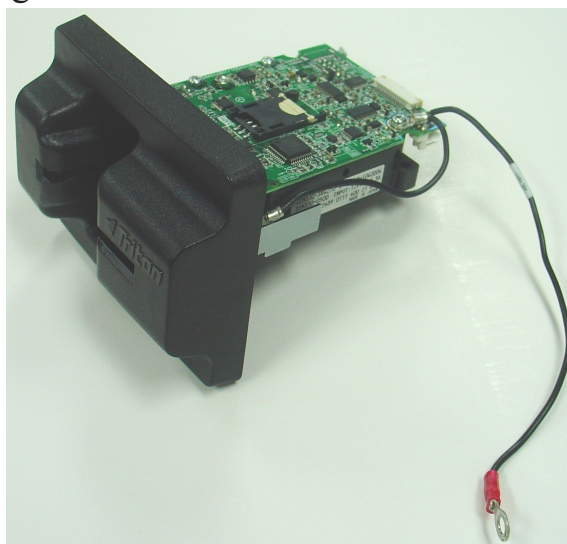
REQUIRED PARTS AND TOOLS

TOOLS REQUIRED	#1 & #2 Phillips screwdriver with a 6 in. shank, ESD wrist strap with grounding cord
KIT 06200-00348	Field Replacement Kit

RL 5k XScale

Description	Qty
Sankyo ICM330 Card Reader Cable, X-scale	1
Screw #6 x3/8 phillips drive pan plastite 48-2 zinc plate	4
Sankyo 330 Card reader w/ software key & Bezel	1
Mounting bracket, angled, one 6-32 threaded hole, one 0.165" open hole, 0.062" thick steel, tin plate	1
Screw #6-32 1/4 Inch Pan Phil Head w/Ext Tooth Wash ROHS	1

This kit includes a Sankyo ICM330 EMV compliant card reader, bezel, and applicable cable for each ATM model. The card reader includes an attached ground wire. Ensure the card reader and cabinet grounds are joined. Use the angle bracket as necessary to make ground connections.



Improper grounding may cause damage to ATM and/or components.

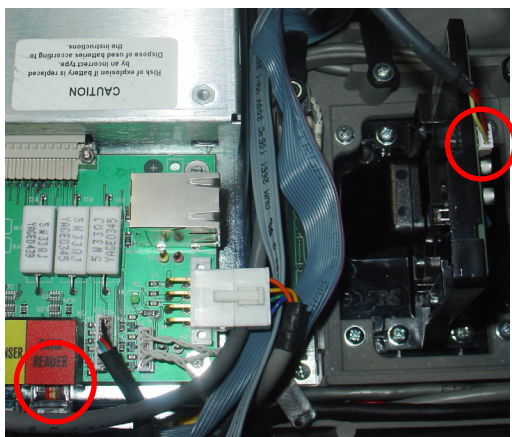
SECTION TWO

RL5100 XSCALE REMOVE AND REPLACE PROCEDURES

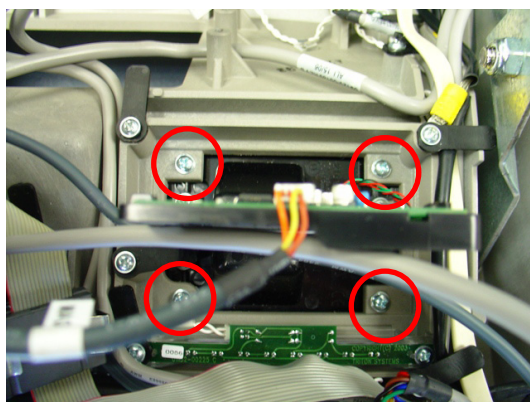
Before proceeding, follow these steps to remove power from the ATM:

Enter **Management Functions > System Parameters > Shut Down the Terminal > Enter**. When prompted, turn power **OFF** on the ATMs power supply. Unlock and open the ATM control panel. Turn the power switch to the OFF (0) position. If possible, unplug the ATM power cord at the wall outlet. Put on the ESD strap and attach the cord to the ground.

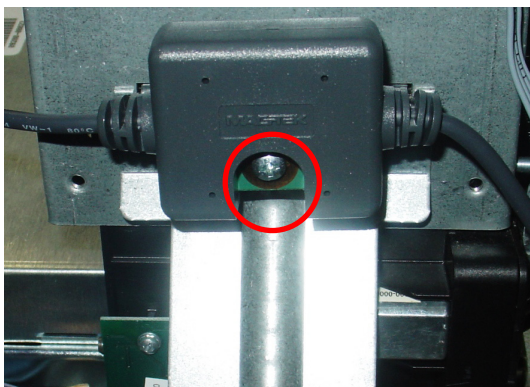
1. Refer to the applicable service manual for your unit for steps to remove and replace the card reader. Remove the outer 4 (four) screws only. Ensure you are holding the card reader as you remove the last screw to avoid dropping it.
2. Ensure the old cables are removed from the old card reader and docking board, and the new cables are connected properly to the new card reader and docking board.
3. Refer to the pictures below for illustrative instructions and routing of any cables.



◆ Disconnect and remove the card reader to docking board cable.



◆ Remove the 4 (four) corner screws retaining the card reader.

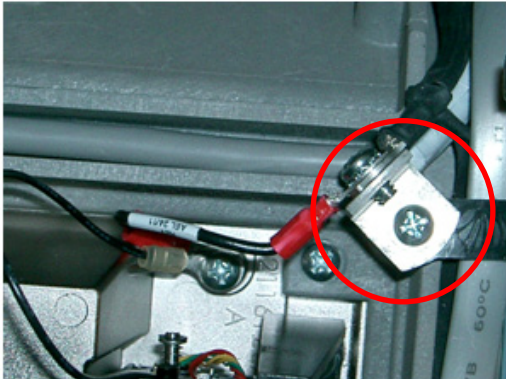


◆ Remove the screw retaining the ESD device to the back of the printer bracket. Loosen the cable retainers along the bottom of the fascia, and remove the cable and ESD device.



◆ Install card reader as shown and secure with 4 (four) screws provided.

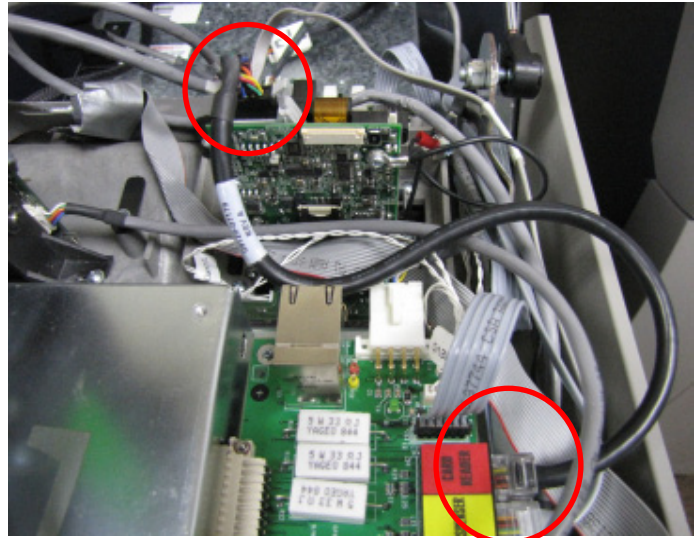
EMV 330 CARD READER UPGRADE PROCEDURES



◆Remove screw and attach EMV grounds to this point, using the angle bracket.



Improper grounding may cause damage to ATM and/or components.



◆Connect the new cable to the card reader and docking board. Route and secure as necessary to minimize damage.

4. Upon completion of the upgrade, perform the card reader test in the diagnostics area of your service manual, and return the unit to service.

SECTION 3

EMV 330 CARD READER

UPGRADE

TRAVERSE

KIT 06200-00349

EMV 330 CARD READER UPGRADE PROCEDURES

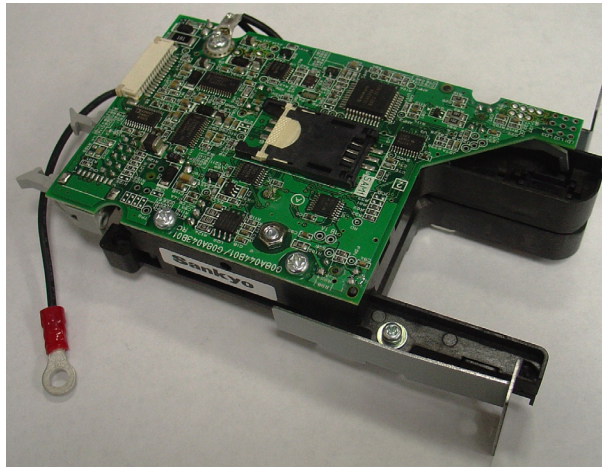
REQUIRED PARTS AND TOOLS

TOOLS REQUIRED	#1 & #2 philips screwdriver with a 6 inch shank, ESD wrist strap with grounding cord
KIT 06200-00349	Card Reader Upgrade Kit

Traverse

Description	Qty
Sankyo ICM330 card reader cable, Traverse	1
Sankyo 330 Card reader w/ software key	1

This kit includes a Sankyo ICM330 EMV compliant card reader and applicable cable for each ATM model. The card reader includes an attached ground wire. Ensure the card reader and cabinet grounds are joined.



Improper grounding may cause damage to ATM and/or components.

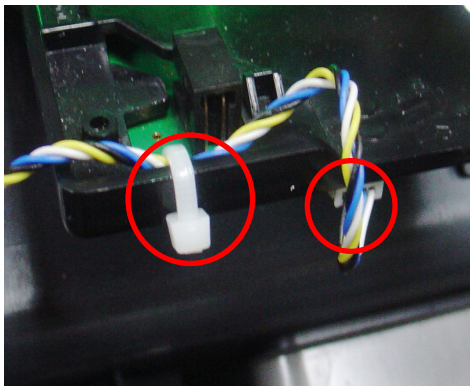
SECTION THREE

TRAVERSE REMOVE AND REPLACE PROCEDURES

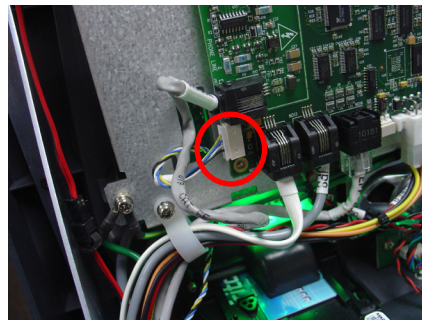
Before proceeding, follow these steps to remove power from the ATM:

Enter **Management Functions > System Parameters > Shut Down the Terminal > Enter**. When prompted, turn power **OFF** on the ATMs power supply. Unlock and open the ATM control panel. Turn the power switch to the OFF (0) position. If possible, unplug the ATM power cord at the wall outlet. Put on the ESD strap and attach the cord to the ground

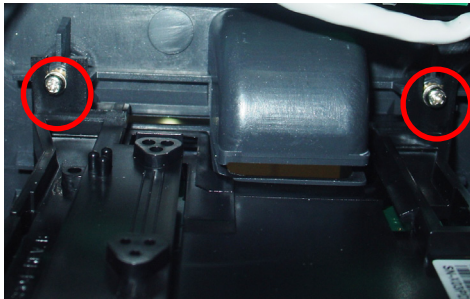
1. Refer to the applicable service manual for your unit for steps to remove and replace the card reader. Remove the outer 4 (four) screws only. Ensure you are holding the card reader as you remove the last screw to avoid dropping it.
2. Ensure the old cables are removed from the old card reader and mother/docking board, and the new cables are connected properly to the new card reader and docking board.
3. Refer to the pictures below for illustrative instructions and routing of any cables.



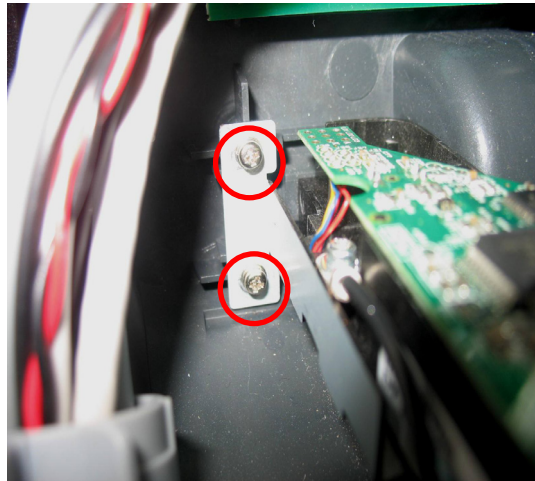
◆Disconnect the cable from the existing card reader, and cut the Tye wrap.



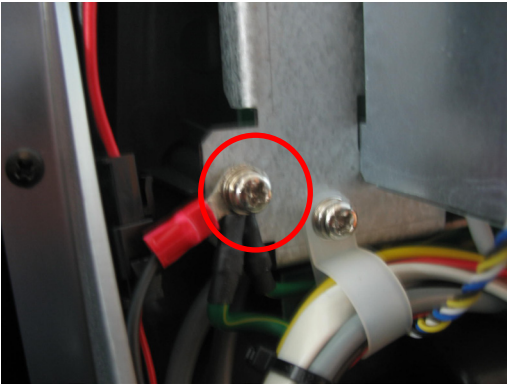
◆Remove the two screws retaining the main board cover, and remove the cover.
◆Disconnect the cable connector from the main board, and remove the cable.



◆Remove the four small screws retaining the card reader to the fascia. Access to these screws is difficult. The top two screws are shown. Two additional screws are on the bottom. **Retain the screws** for installation of the new card reader.

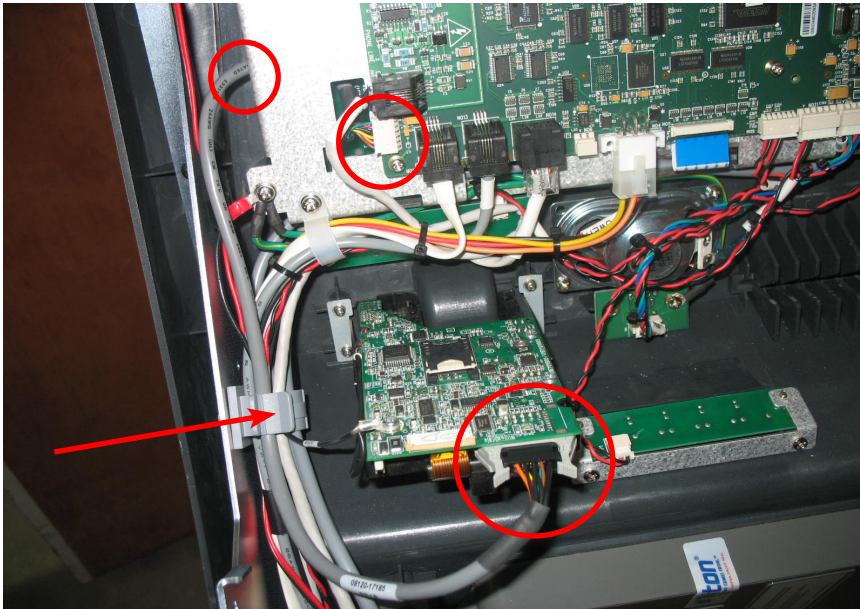


◆Attach the new card reader to the fascia using the screws removed in previous step. The card reader will have the circuit board on top. Two left screws shown. Two additional screws on the right side.



Improper grounding may cause damage to ATM and/or components.

◆ Remove ground screw from corner of display bracket and attach card reader ground cables to cabinet grounds.



◆ Connect the cable to the Card reader. Route the cable as shown, behind the display/main board bracket, and up through the hole to the main board. Secure with the cable clamp. Replace the main board cover, and secure with the two screws.

4. Upon completion of the upgrade, perform the card reader test in the diagnostics area of your service manual, and return the unit to service.

SECTION 4

**EMV 330 CARD READER
UPGRADE
RT2/FT5
X2 & XSCALE PLATFORM
KIT 06200-00534**

EMV 330 CARD READER UPGRADE PROCEDURES

TOOLS REQUIRED	#2 Phillips screwdriver with a 6 inch shank (Magnetic recommended) ESD wrist strap with grounding cord	
KIT P/N: 06200-00534	SANKYO ICM330 DIP EMV CARD READER UPGRADE X2	
PARTS SUPPLIED		
DESCRIPTION		QUANTITY
ICM330 EMV Card Reader w/ Software Key & FT/RT Bezel		1
Serial Card Reader Comms Ribbon Cable, X2		1
Screw #6-32, 1/4" Pan Phil Head w/Ext Tooth Wash (RoHs)		1
Triton EMV Kernel		1
EMV ICM330 Card Reader Cable, X-scale		1

NOTE: This kit includes a Sankyo ICM330 EMV compliant card reader, bezel and applicable cable for each ATM model. The card reader includes an attached ground wire. Ensure the card reader and cabinet ground wires are joined. Use the angle bracket as necessary to make ground connections.



Improper grounding may cause damage to ATM and/or components.

SECTION FOUR

REMOVING THE CARD READER ASSEMBLY FROM THE UNIT

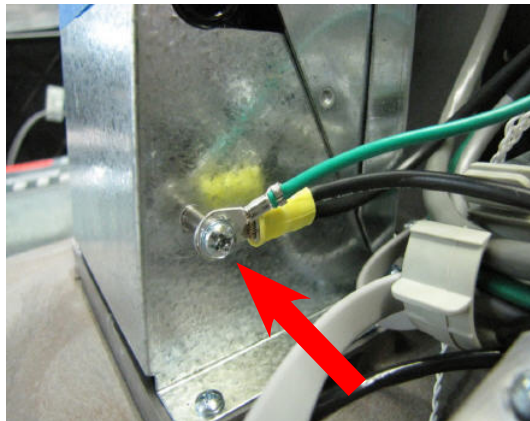
The Card Reader Assembly is located on the control panel.

Tools:

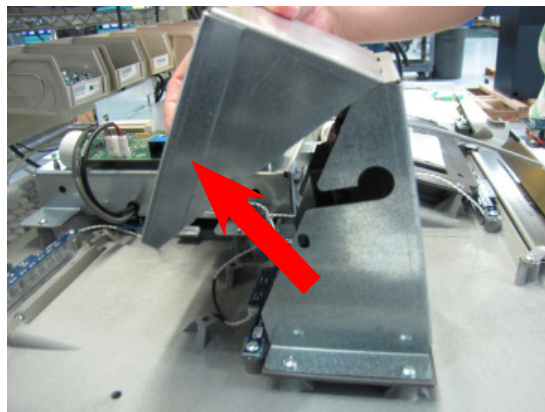
- 1 - #2 Phillips screwdriver
- 1 - ESD wrist strap with grounding cord

To remove the card reader assembly, complete the following procedure:

1. Put the ESD wrist strap on and attach the cord to the ground.
2. Perform a proper shut down of the unit.
3. Unlock and open the upper portion of the cabinet. Turn the power switch on the power supply OFF.
4. Using a #2 Phillips screwdriver, remove the screw and two ground wires on the side of the card reader cover. Set the screw aside for reinstall.



5. Rotate the card reader cover open and remove the top portion. Set aside.

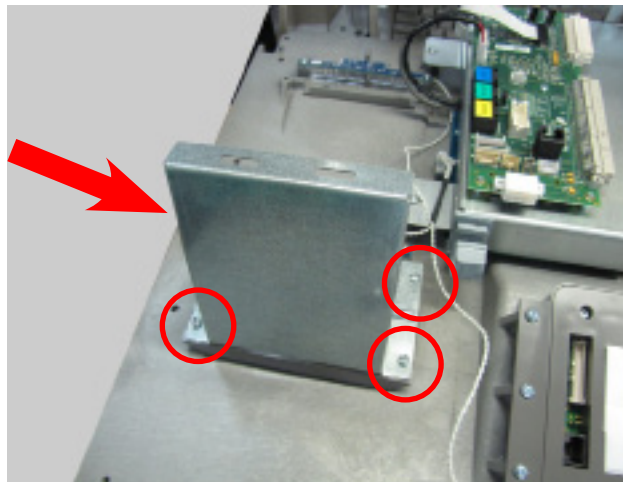


REMOVING THE CARD READER ASSEMBLY FROM THE UNIT CONT...

6. Pop the bushing out of the bracket to release the card reader cable. Set the bushing aside for re-install. Unplug the cable from the card reader and from the main board.



7. While holding the card reader and bracket, remove the four screws securing the assembly to the control panel. Set the bracket aside for re-install.



SECTION FOUR

INSTALLING THE EMV CARD READER ASSEMBLY INTO THE UNIT

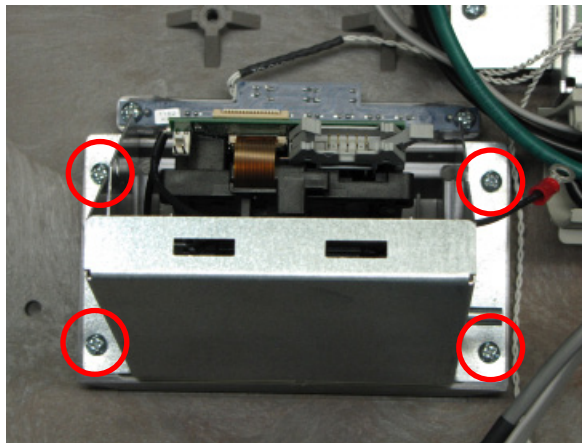
The Card Reader Assembly is located on the control panel.

Tools:

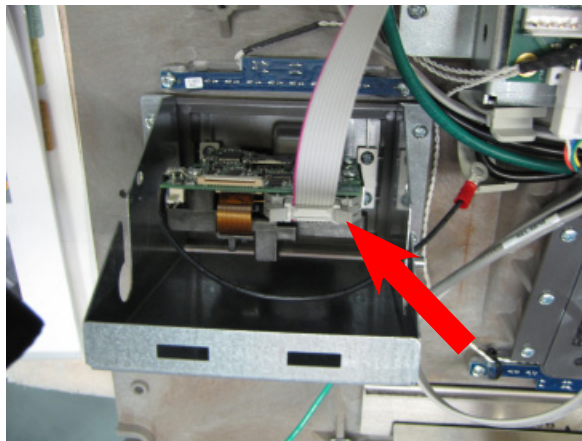
- 1 - #2 Phillips screwdriver
- 1 - ESD wrist strap with grounding cord

To install the EMV card reader assembly, complete the following procedure:

1. Put the ESD wrist strap on and attach the cord to the ground.
2. Set the EMV card reader in place and set the cover in place over the reader.
3. While holding the card reader and bracket in place, secure the parts to the control panel with the four screws previously removed.

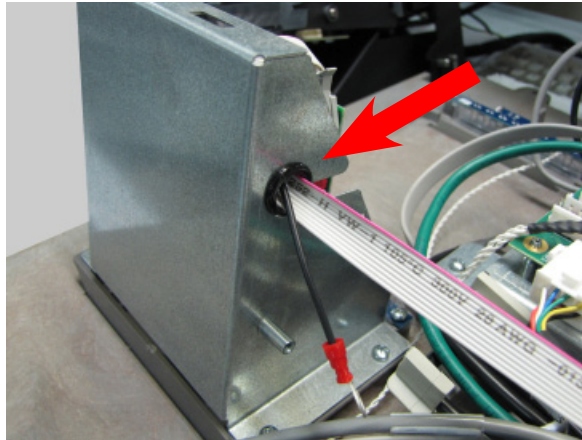


4. Plug the new card reader cable into the top of the card reader (X2 ribbon cable shown below).

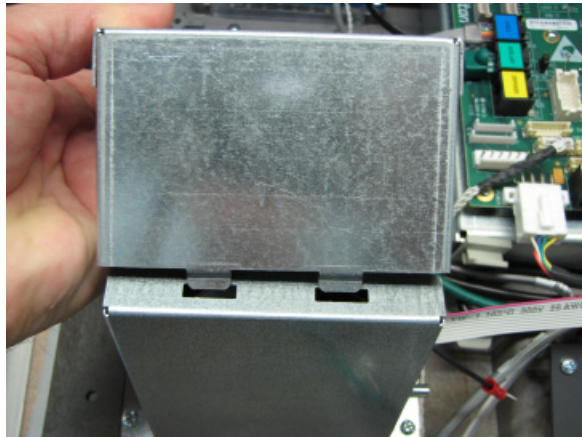


INSTALLING THE EMV CARD READER ASSEMBLY INTO THE UNIT CONT...

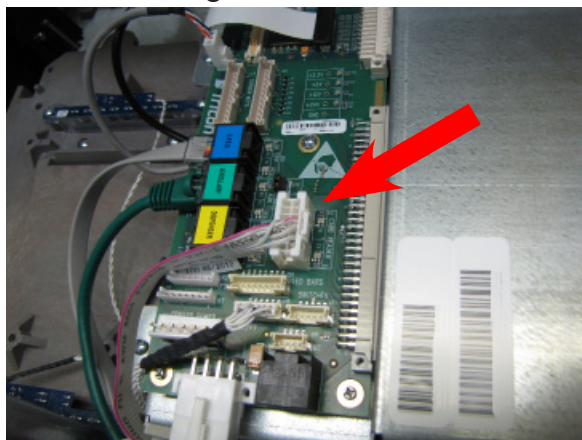
5. Attach the grommet previously removed to both the card reader ground wire and the card reader cable. Insert the grommet into the bracket hole.



6. Reinstall the card reader cover by inserting the two tabs into the two notches and rotating into the closed position.



7. Plug the card reader cable into the docking board.



INSTALLING THE EMV CARD READER ASSEMBLY INTO THE UNIT CONT...

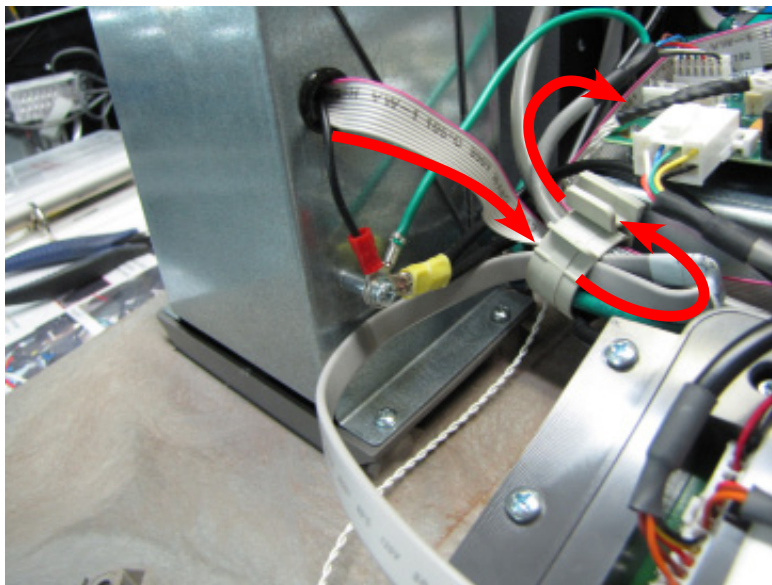
- Secure the card reader ground wire, audio ground wire and the main ground wire to the side of the card reader cover with the screw previously removed. Ensure the wires are in the correct order:
Card reader bracket > Card reader ground > Audio ground > Control panel ground > Screw



Improper grounding may cause damage to ATM and/or components.



- Unclip the cable clip closest to the card reader bracket. Route the card reader cable through the clip, loop and route it back. Snap the cable clip closed.



- Upon completion of the upgrade, restore power to the unit. Perform the card reader test in the diagnostics area of your service manual then return the unit to service.

SECTION 5A

EMV 330 CARD READER

UPGRADE

8100/9100/9700

KIT 06200-00352

EMV 330 CARD READER UPGRADE PROCEDURES

TOOLS REQUIRED	#2 Phillips screwdriver with a 8 inch shank (Magnetic recommended) ESD wrist strap with grounding cord Side cut pliers
KIT P/N: 06200-00352	SANKYO ICM330 CARD READER UPGRADE FOR 8100/9100/9700
PARTS SUPPLIED	
DESCRIPTION	QUANTITY
Sankyo 330 EMV Card Reader w/ Software Key & RL/ARGO/9100 Bezel	1
Sankyo ICM330 Card Reader Cable Z180 36"	1
Screw #6 x 3/8 Phillips Drive Pan Plastite 48-2 Zinc Plate	4
6 Inch Ty Wrap	2
CreditCall EMV License	1

CONTENTS

8100/9100

REMOVING THE MAGTEK I-65 CARD READER ASSEMBLY	PAGE 5-3
REMOVING THE TRACK 1-2 CARD READER ASSEMBLY	PAGE 5-6
INSTALLING THE SANKYO EMV330 CARD READER ASSEMBLY	PAGE 5-8

9700

REMOVING THE OLD CARD READER ASSEMBLY	PAGE 5-11
INSTALLING THE SANKYO EMV330 CARD READER ASSEMBLY	PAGE 5-13

NOTE: This kit includes a Sankyo ICM330 EMV compliant card reader, bezel and applicable cable for each ATM model. The card reader includes an attached ground wire. Ensure the card reader and cabinet ground wires are joined.



Improper grounding may
cause damage to ATM
and/or components.

8100 / 9100

REMOVING THE MAGTEK I-65 CARD READER ASSEMBLY

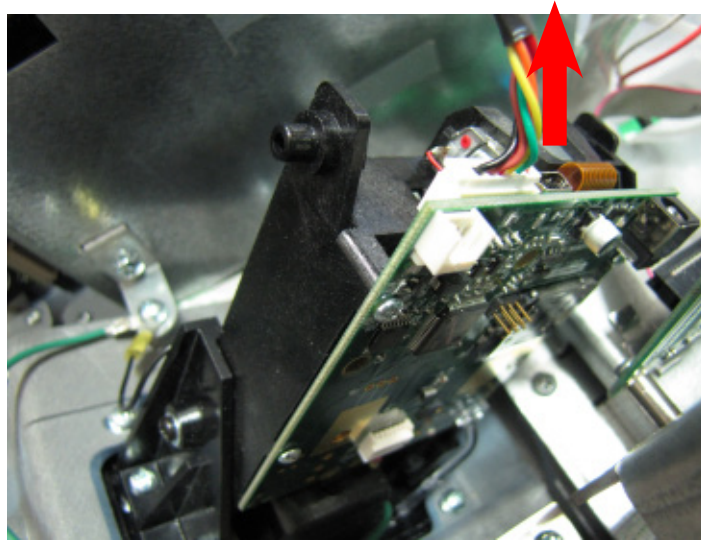
The Card Reader Assembly is located on the control panel.

Tools:

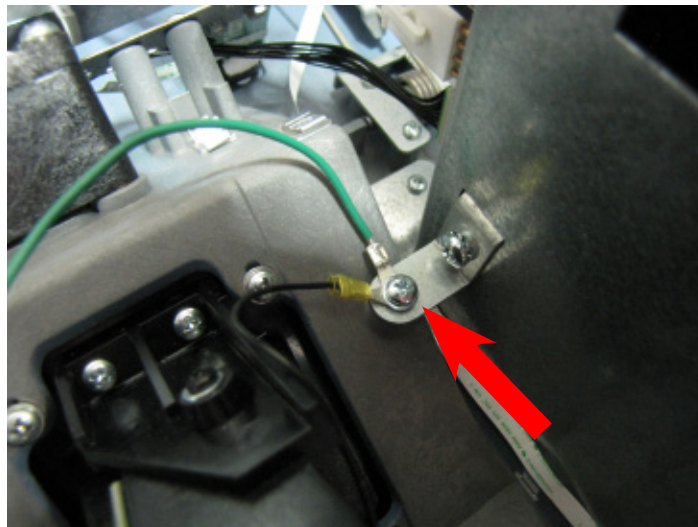
- 1 - #2 Phillips screwdriver
- 1 - ESD wrist strap with grounding cord
- 1 - Side cut pliers

To remove the card reader assembly, complete the following procedure:

1. Put the ESD wrist strap on and attach the cord to the ground.
2. Unlock and open the upper portion of the cabinet.
3. Turn the power switch on the power supply OFF.
4. Unplug the communication cable from the card reader.

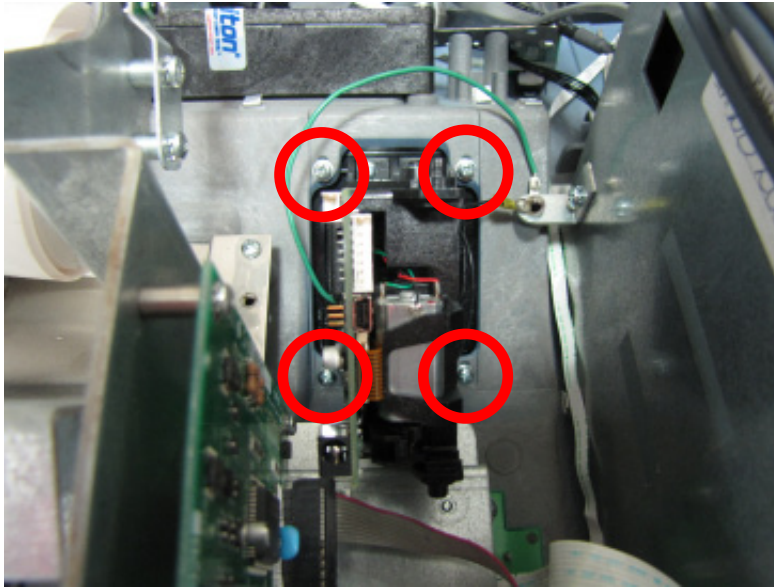


5. Remove the screw securing the two card reader ground wires. Reinstall the screw to secure the mainboard cover.

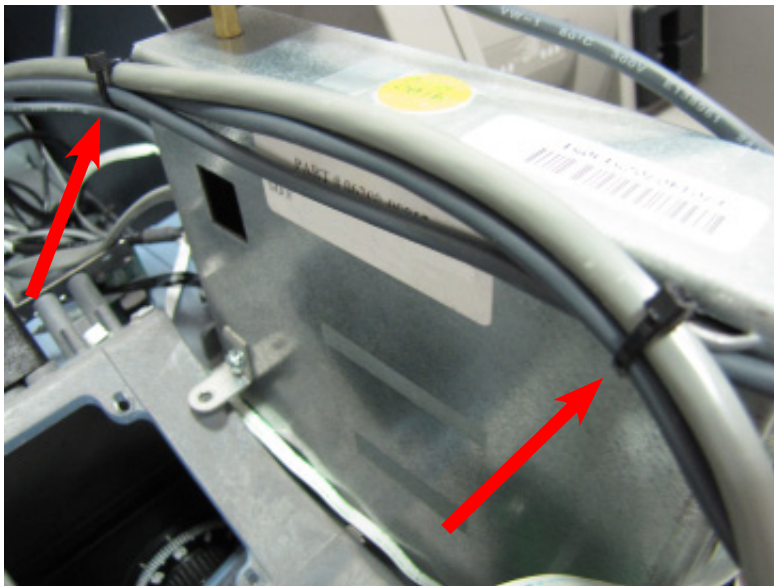


REMOVING THE MAGTEK I-65 CARD READER ASSEMBLY CONT...

6. While holding the card reader bezel from underneath, remove the four screws securing the card reader. Remove the card reader from the control panel. Discard screws and card reader.



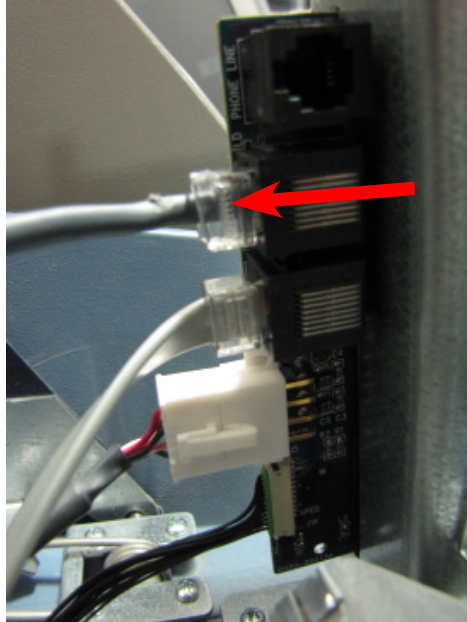
7. Cut the TY Wraps holding the card reader cable and the printer power cable to the mainboard cover.



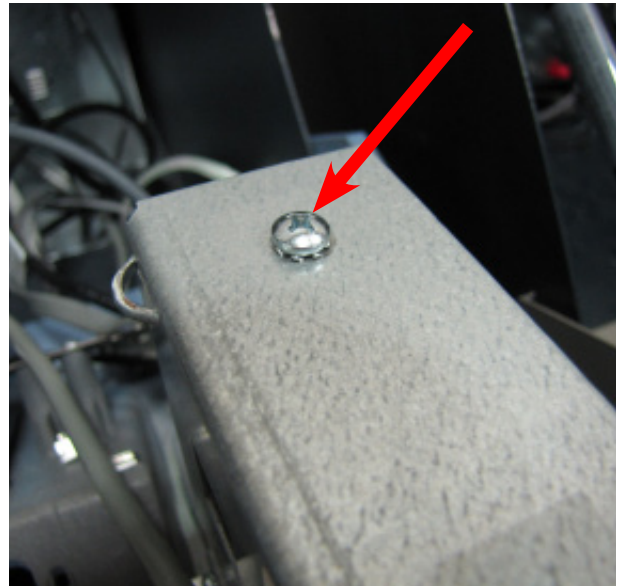
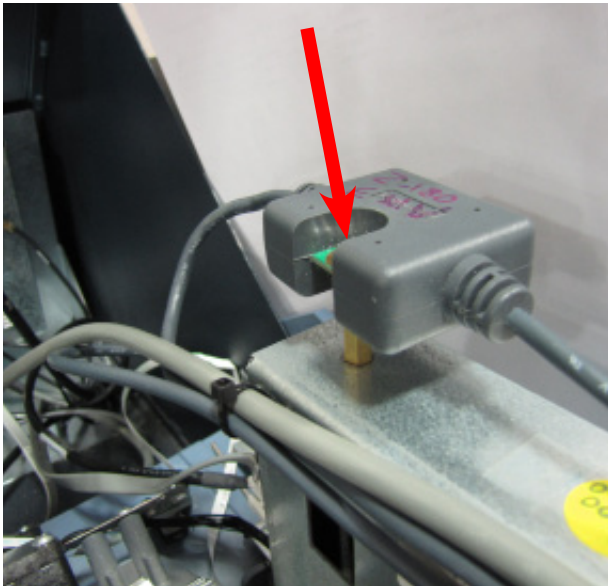
SECTION FIVE

REMOVING THE MAGTEK I-65 CARD READER ASSEMBLY CONT...

8. Unplug the card reader cable from the back of the mainboard.



9. Remove the screw holding the card reader cable ferrite box to the post. Remove the post from the mainboard cover. Discard the post and cable. Reinstall the screw into the mainboard cover to secure the two covers together.



REMOVING THE TRACK 1-2 CARD READER ASSEMBLY

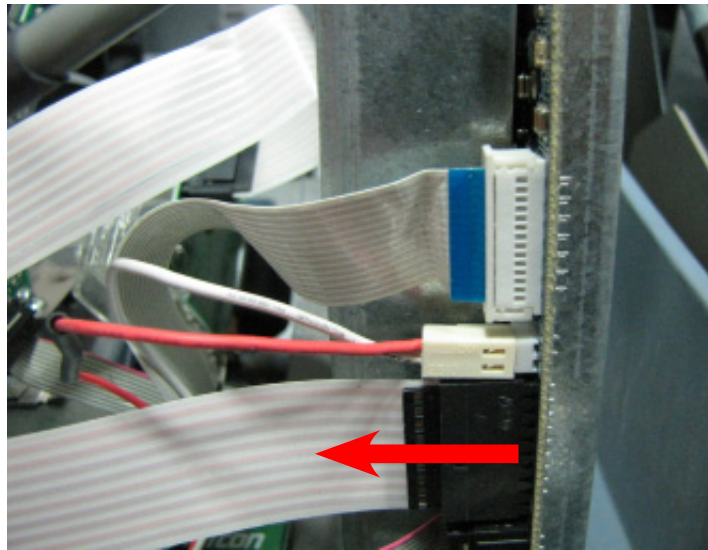
The Card Reader Assembly is located on the control panel.

Tools:

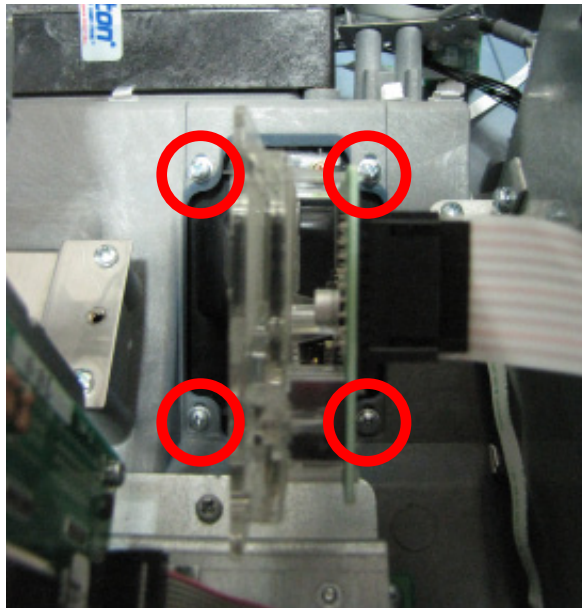
- 1 - #2 Phillips screwdriver
- 1 - ESD wrist strap with grounding cord
- 1 - Side cut pliers

To remove the card reader assembly, complete the following procedure:

1. Put the ESD wrist strap on and attach the cord to the ground.
2. Unlock and open the upper portion of the cabinet.
3. Turn the power switch on the power supply OFF.
4. Unplug the communication cable from the front of the mainboard.

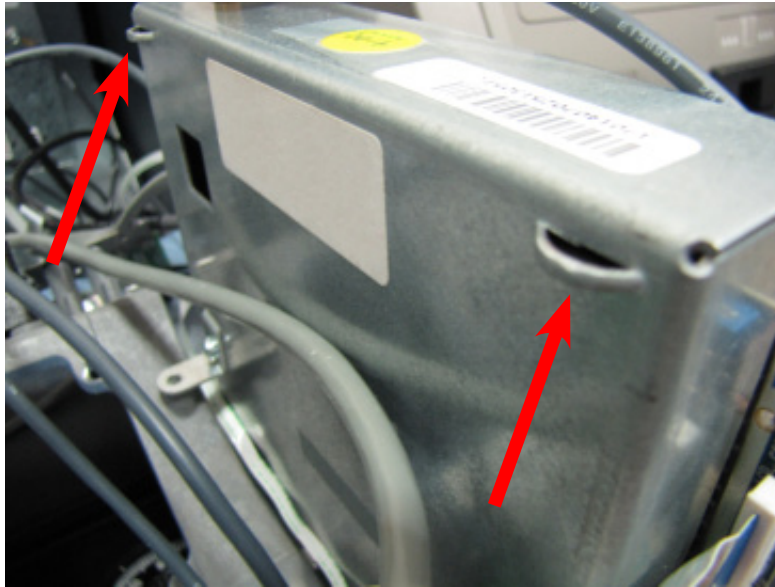


5. While holding the card reader bezel from underneath, remove the four screws securing the card reader. Remove the card reader, with the communication cable still attached, from the control panel. Discard screws, card reader and attached cable.



REMOVING THE TRACK 1-2 CARD READER ASSEMBLY CONT...

6. Cut the TY Wraps holding the printer power cable to the mainboard cover.



INSTALLING THE SANKYO EMV330 CARD READER ASSEMBLY

The Card Reader Assembly is located on the control panel.

Tools:

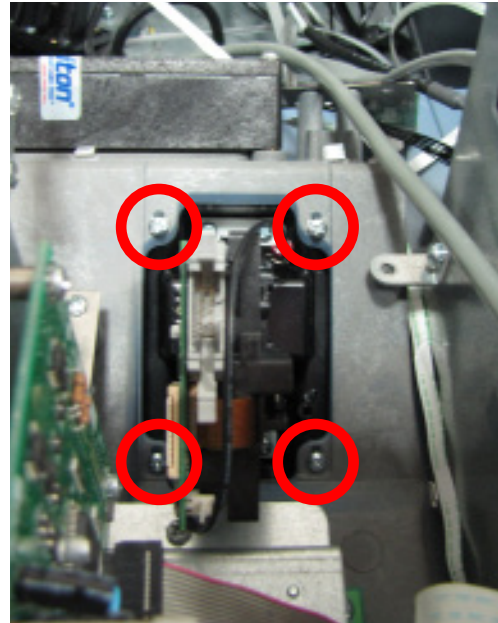
- 1 - #2 Phillips screwdriver
- 1 - ESD wrist strap with grounding cord
- 1 - Side cut pliers

To install the card reader assembly, complete the following procedure:

1. Put the ESD wrist strap on and attach the cord to the ground.
2. Unlock and open the upper portion of the cabinet.
3. Turn the power switch on the power supply OFF.
4. Insert the EMV card reader into the control panel from underneath. Ensure the card reader slot extends up and down as shown in the picture below. Line up the predrilled holes in the card reader bezel with the holes in the control panel. Secure the card reader in place with the 4 new screws supplied in the upgrade kit.



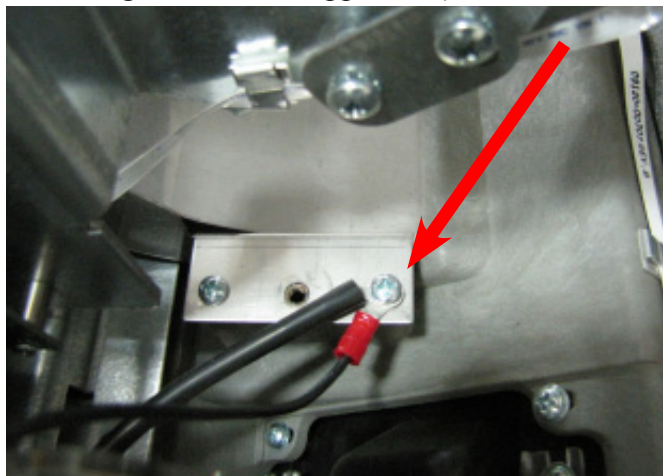
Front view of card reader



5. Remove the rear right printer bracket screw. Reinstall the screw securing the EMV card reader ground wire (and the unit main ground wire if applicable).

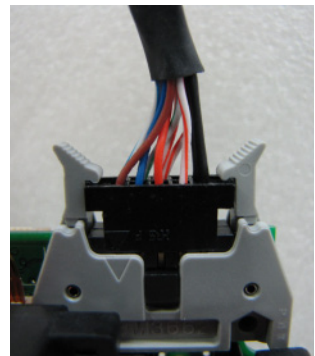
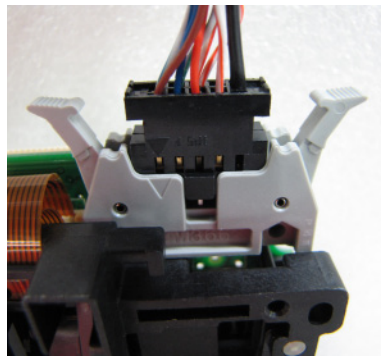
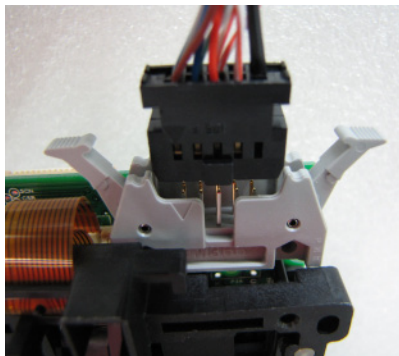
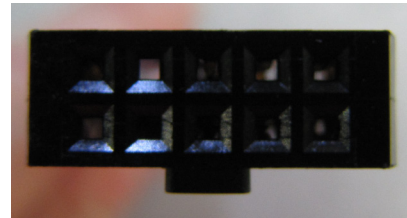
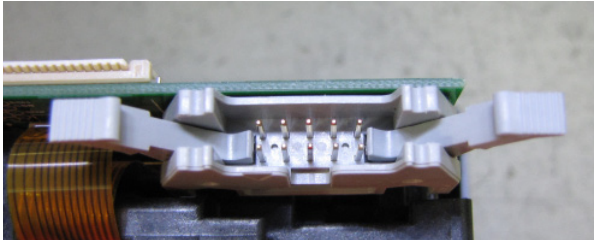


Improper grounding may cause damage to ATM and/or components.

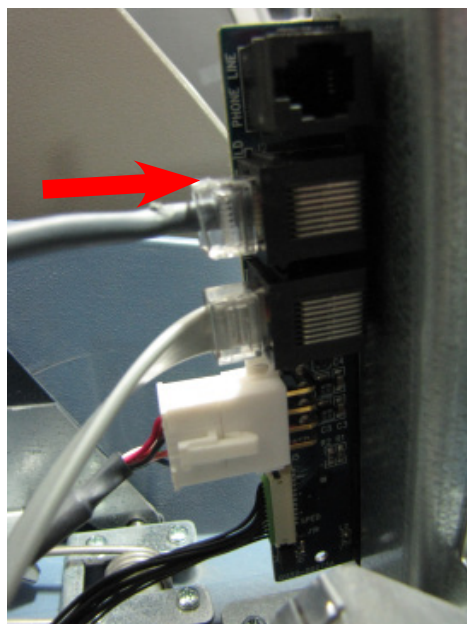


INSTALLING THE SANKYO EMV330 CARD READER ASSEMBLY CONT...

6. Obtain the card reader cable. Examine the cable end and the cable port on the card reader. Ensuring the locking tabs are out, plug the cable into the card reader lining up the tab on the cable with the notch in the port. The tabs will close as the cable is inserted into the port. Ensure the tabs click into the locking position.

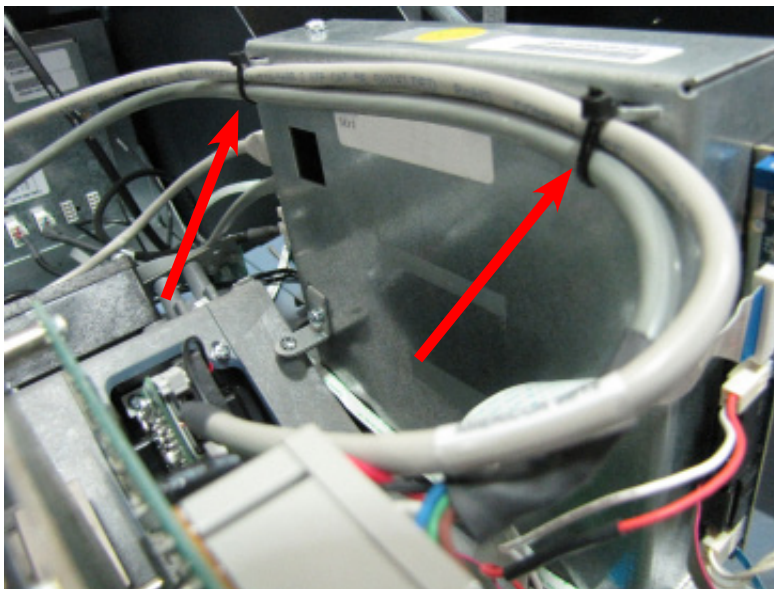


7. Plug the card reader cable into port J2 in the back of the mainboard.



INSTALLING THE SANKYO EMV330 CARD READER ASSEMBLY CONT...

8. Route the EMV card reader cable and the printer power cable along the side of the mainboard cover as shown. TY Wrap the two cables together to the mainboard cover. Cut off excess TY Wrap.



9. Loop the excess card reader cable onto itself neatly and route the cable through cable clip as shown.

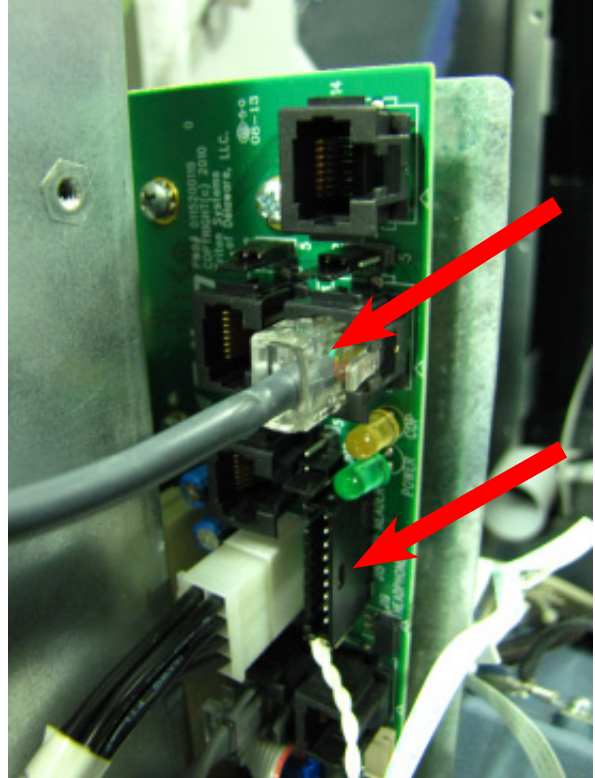


9700

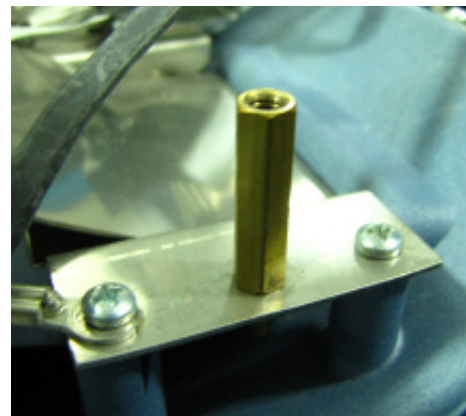
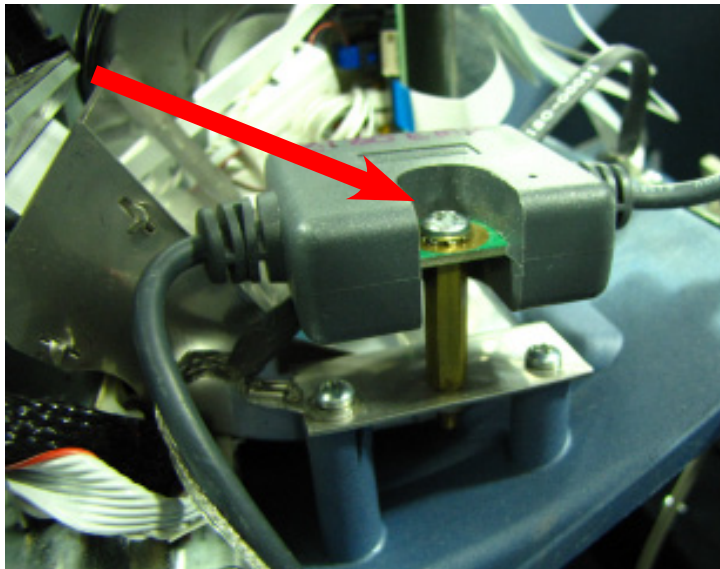
Removing the old Card Reader

1. Put the ESD wrist strap on and attach the cord to the ground.
2. Unlock and open the upper portion of the cabinet.
3. Flip the switch on the power supply to the OFF (O) position.
4. Unplug the card reader data cable from the docking board.

NOTE: the card reader cable may be plugged into J15 “Card Reader” or J13 “Port 3” depending on the model card reader being removed.

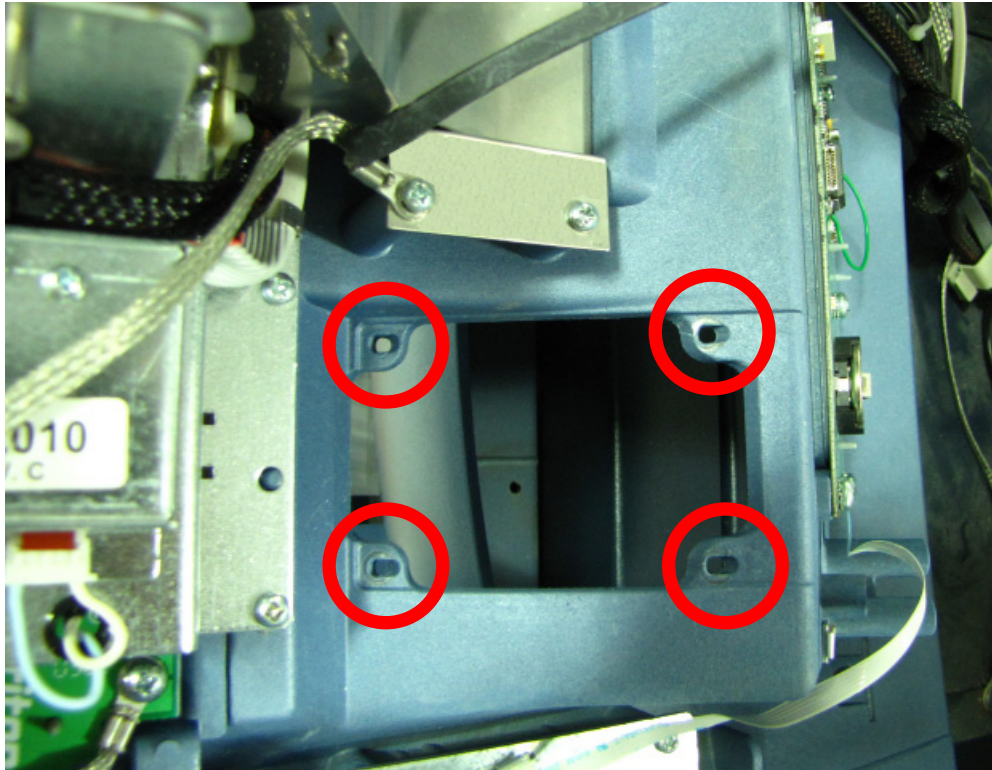


5. If necessary, remove the screw securing the ferrite box to the control panel. Remove the brass post. Discard the screw and post.



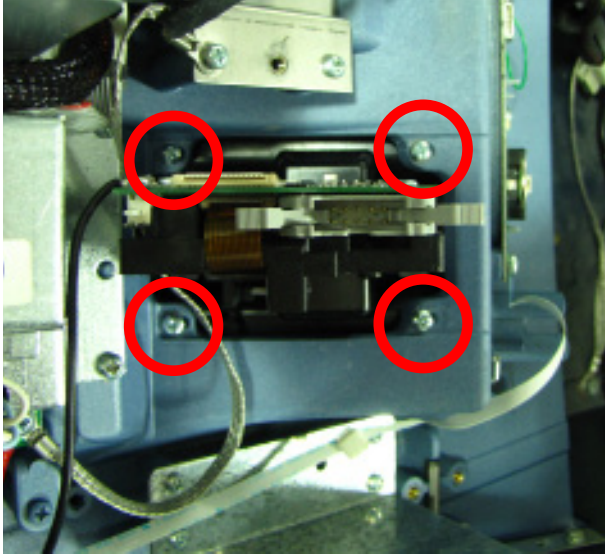
EMV 330 CARD READER UPGRADE PROCEDURES

6. While holding the card reader from the front of the control panel, remove the 4 screws that secure it in place. Remove the card reader and card reader data cable.



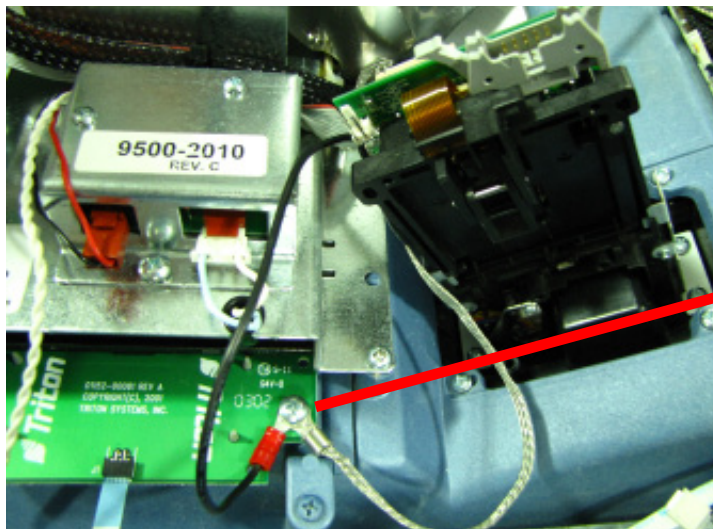
Installing the Sankyo EMV 330 Card Reader

1. Put the ESD wrist strap on and attach the cord to the ground.
2. Unlock and open the upper portion of the cabinet.
3. Flip the switch on the power supply to the OFF (O) position.
4. Insert the EMV card reader from the front of the unit. Secure the card reader in place with the 4 screws supplied.



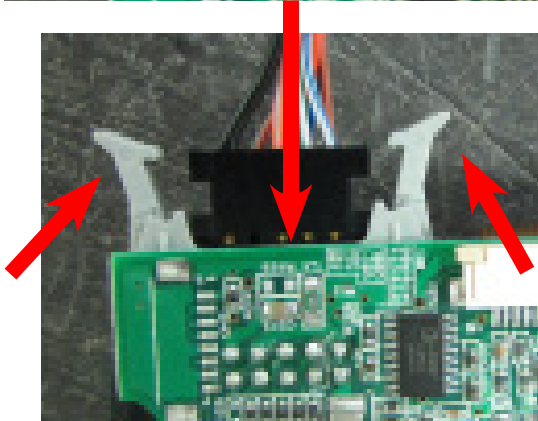
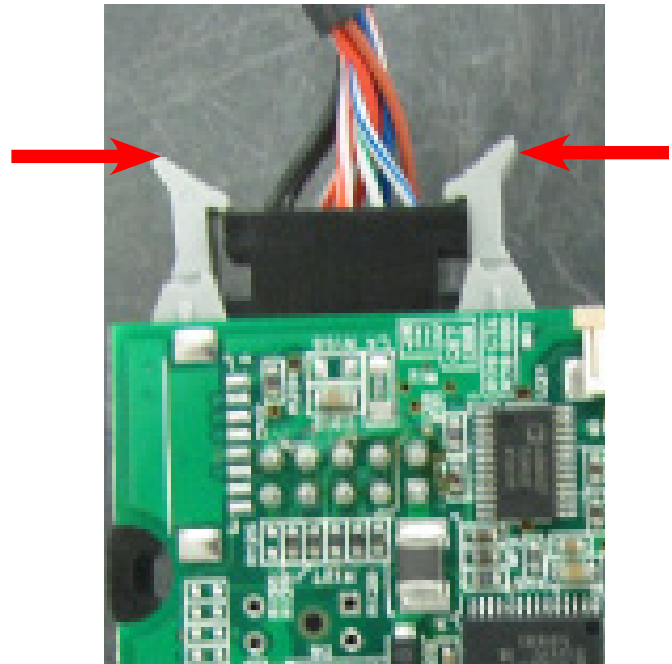
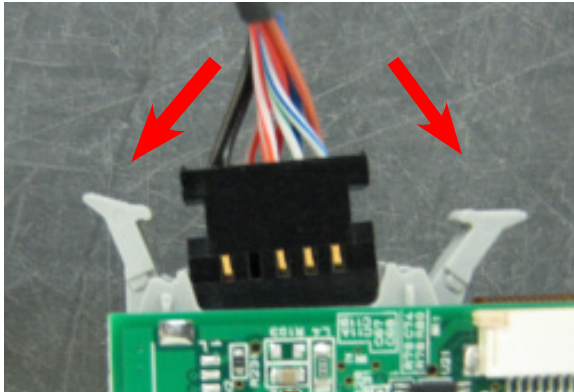
View from Front of Unit
(Triton logo correctly oriented)

5. Remove the screw securing the unit ground wire to the control panel. Install the card reader ground cable onto the screw and reinstall the screw as shown.

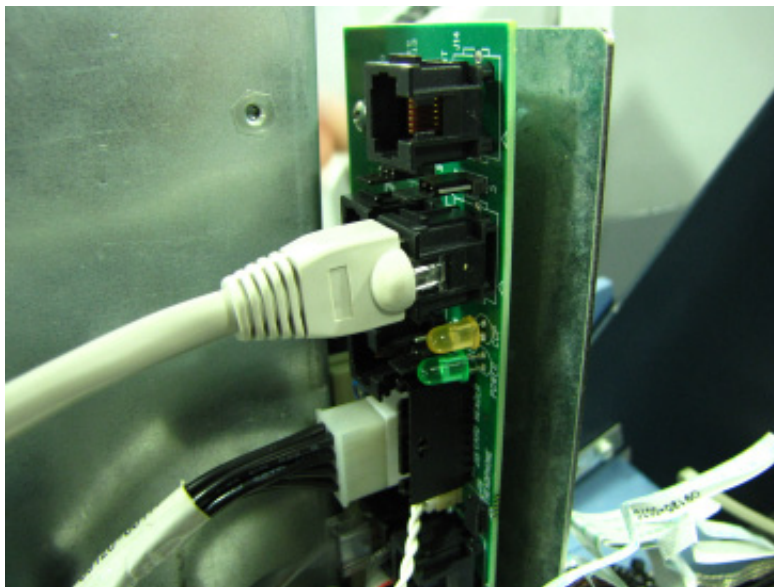


EMV 330 CARD READER UPGRADE PROCEDURES

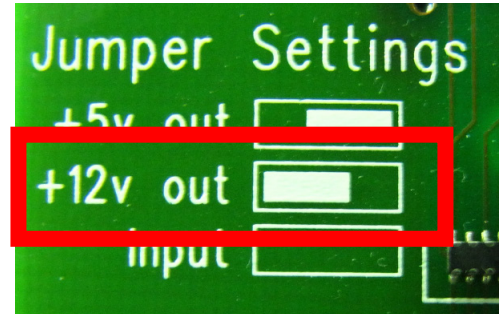
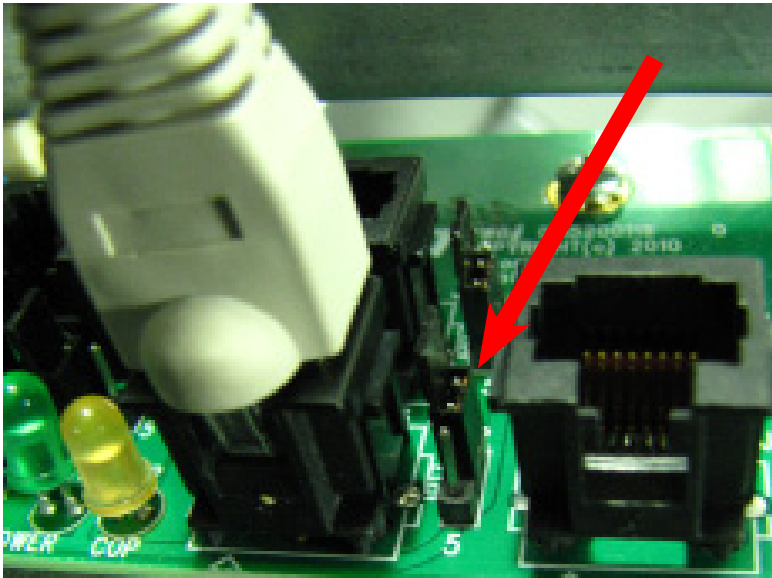
- Obtain the EMV card reader data cable. Ensure the cable locking tabs on the card reader are in the unlocked position (out). Plug the cable into the card reader. As the cable is inserted into the port, the locking tabs will close over the cable securing it in place.



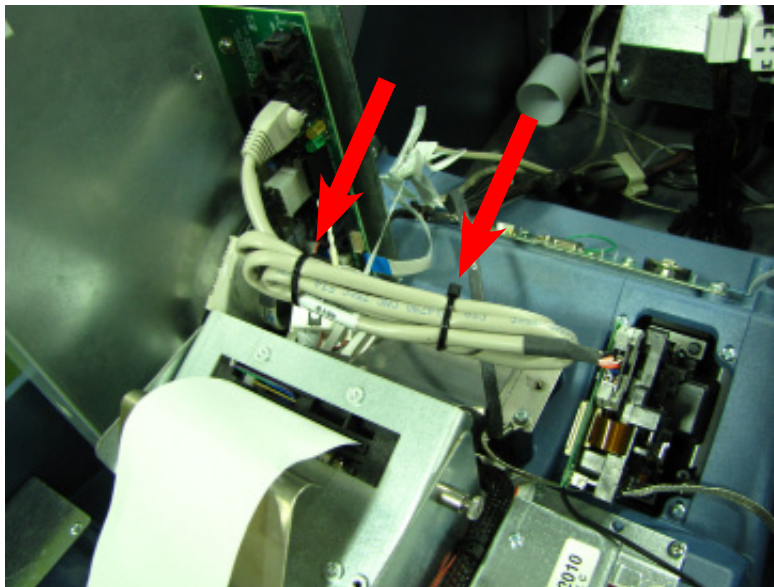
- Plug the other end of the card reader cable into J13 Port 3 of the docking board.



8. Set the J13 jumper +12v.



9. Loop the card reader cable back on itself to condense the length of the cable. TY Wrap the cable in two spots as shown. Cut off excess TY Wraps.



SECTION 5B

EMV 330 CARD READER UPGRADE WITH MAIN BOARD 9100

KIT 06200-00388

AND

KIT 06200-00389

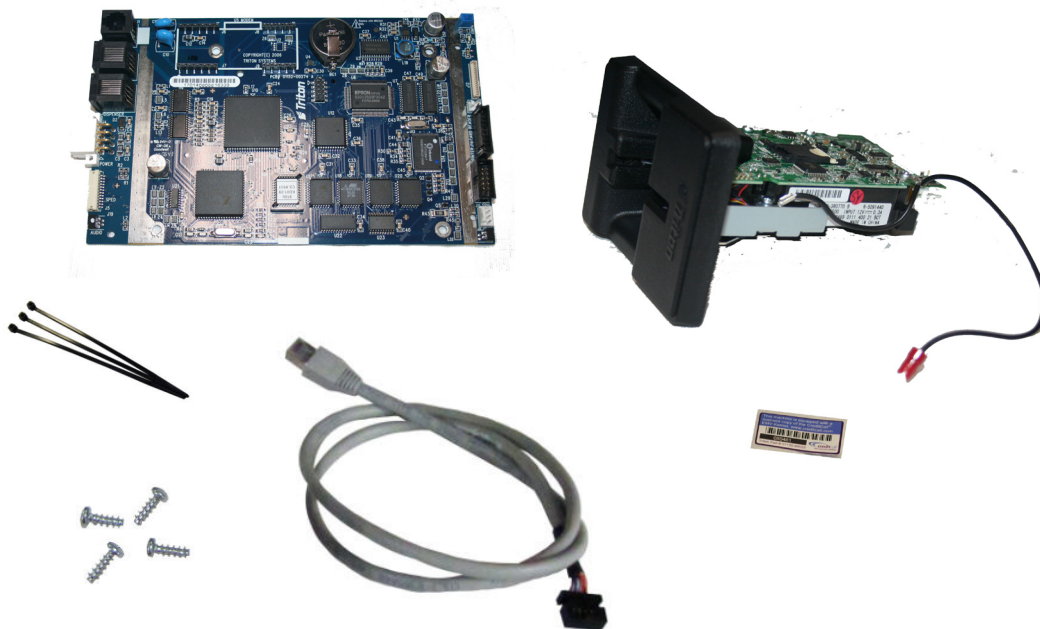
EMV 330 CARD READER UPGRADE PROCEDURES

TOOLS REQUIRED	#2 Phillips screwdriver with 8" shank (magnetic recommended) ESD wrist strap with grounding cord Side-cut pliers	
KIT P/N: 06200-00388	SANKYO ICM330 EMV KIT WITH REFURBISHED US COLOR PROGRAMMED MAIN BOARD W/O COVER	
PARTS SUPPLIED		
DESCRIPTION	QUANTITY	
Sankyo 330 EMV card reader w/ 9100/9700 flat bezel	1	
Sankyo ICM330 card reader cable Z180 36"	1	
Screw #6 x 3/8 Phillips Drive Pan Plastite 48-2 Zinc Plate	4	
6" Ty Wrap	3	
CreditCall EMV License	1	
US Color main board w/ speech w/o modem, no housing	1	



SECTION FIVE

TOOLS REQUIRED	#2 Phillips screwdriver with 8” shank (magnetic recommended) ESD wrist strap with grounding cord Side-cut pliers
KIT P/N: 06200-00389	SANKYO ICM330 EMV KIT WITH REFURBISHED MONO PROGRAMMED MAIN BOARD W/O COVER
PARTS SUPPLIED	
DESCRIPTION	QUANTITY
Sankyo 330 EMV Card Reader w/ 9100/9700 flay bezel	1
Sankyo ICM330 Card Reader Cable Z180 36”	1
Screw #6 x 3/8 Phillips Drive Pan Plastite 48-2 Zinc Plate	4
6 “ Ty Wrap	3
CreditCall EMV License	1
US MONO main board w/ speech w/o modem, no housing	1



CONTENTS
9100

REMOVING THE MAGTEK I-65 CARD READER ASSEMBLYPAGE 5-B5
REMOVING THE TRACK 1-2 CARD READER ASSEMBLYPAGE 5-B8
REMOVE MODEM AND MAIN BOARDPAGE 5-B10
INSTALL MODEM AND MAIN BOARDPAGE 5-B12
INSTALL SANKYO 330 EMV CARD READERPAGE 5-B14

NOTE: This kit includes a Sankyo ICM330 EMV compliant card reader, bezel and applicable cable for each ATM model. The card reader includes an attached ground wire. Ensure the card reader and cabinet ground wires are joined.



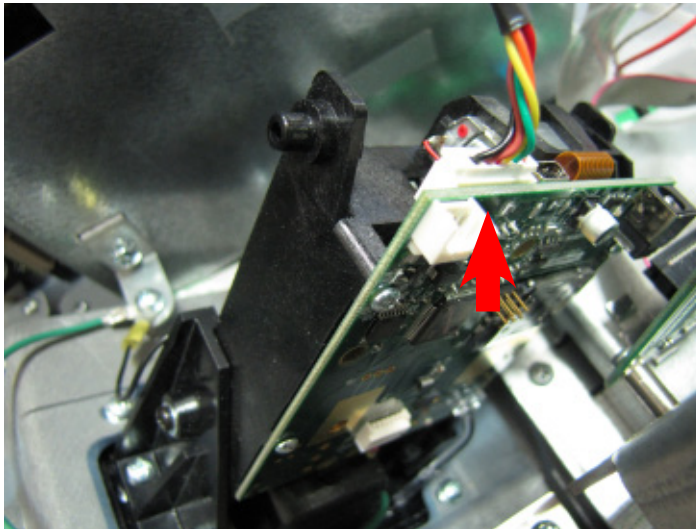
Improper grounding may cause damage to ATM and/or components.

REMOVING THE MAGTEK I-65 CARD READER ASSEMBLY

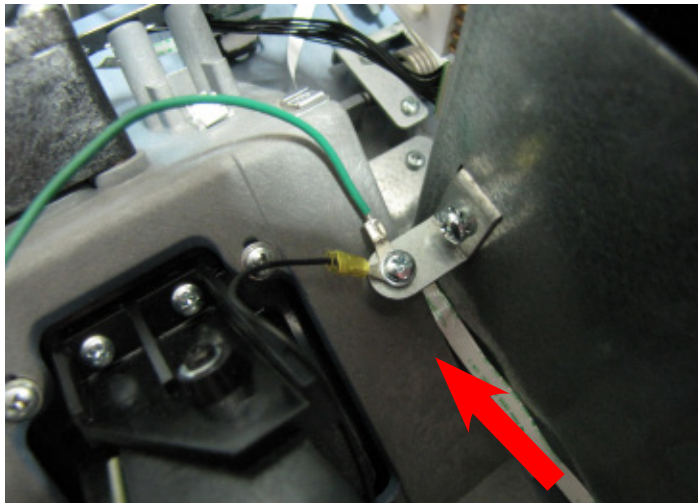
The Card Reader Assembly is located on the control panel.

To remove the card reader assembly, complete the following procedure:

1. Unlock and open the upper portion of the cabinet.
2. Put the ESD wrist strap on and attach the cord to the ground.
3. Turn the power switch on the power supply to the OFF (O) position.
4. Unplug the communications cable from the card reader.

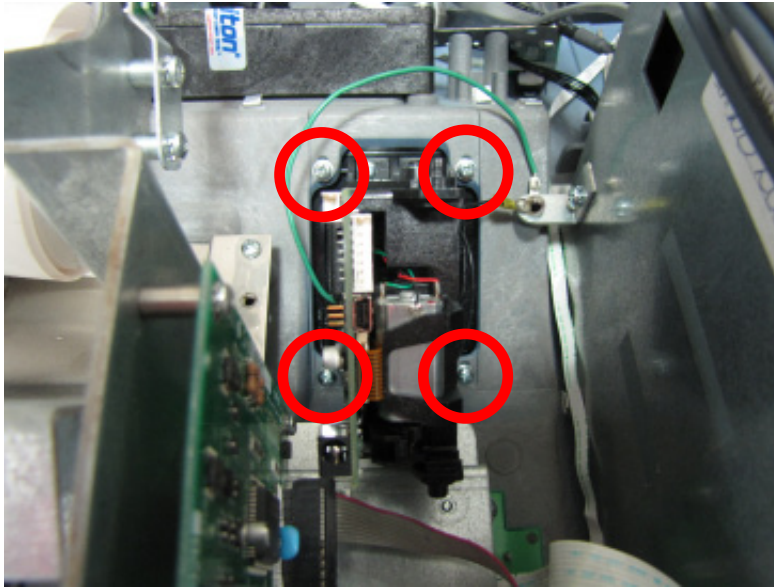


5. Remove the screw securing the two card reader ground wires. Reinstall the screw to secure the main board cover.

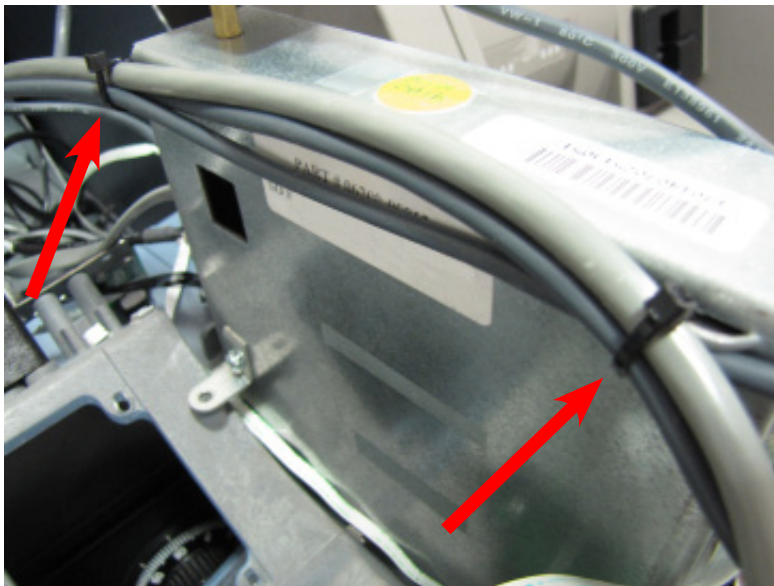


REMOVING THE MAGTEK I-65 CARD READER ASSEMBLY CONT...

6. While holding the card reader bezel from underneath, remove the four screws securing the card reader. Remove the card reader from the control panel. Discard screws and card reader.



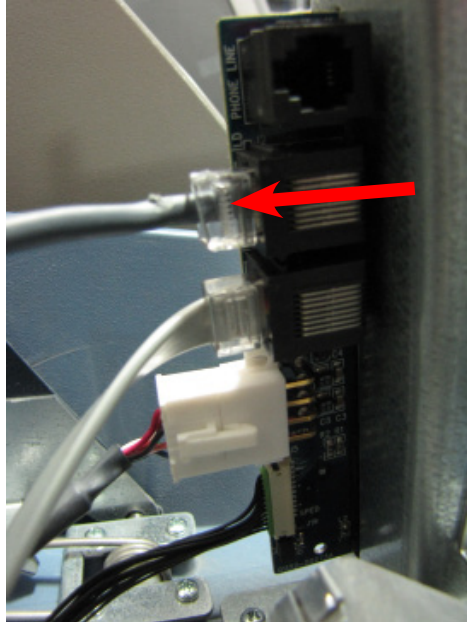
7. Cut the TY Wraps holding the card reader cable and the printer power cable to the main board cover.



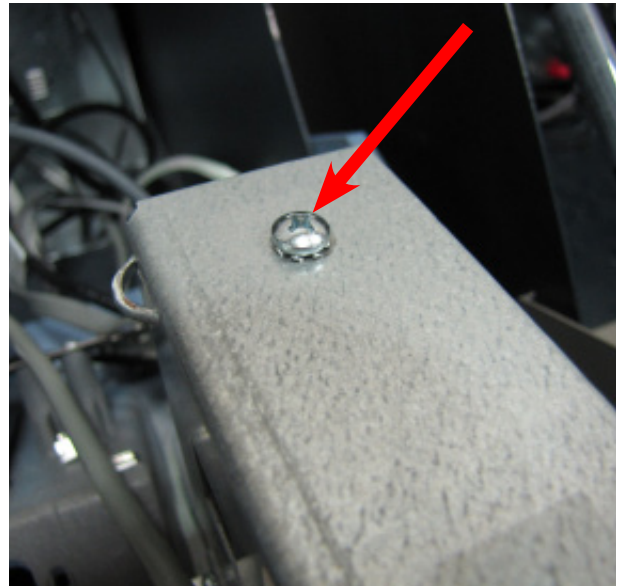
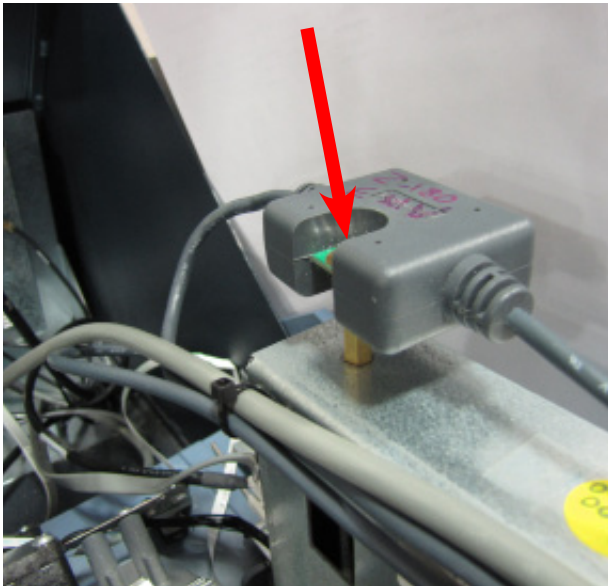
SECTION FIVE

REMOVING THE MAGTEK I-65 CARD READER ASSEMBLY CONT...

8. Unplug the card reader cable from the back of the main board.



9. Remove the screw holding the card reader cable ferrite box to the post and retain for reinstallation. Remove the post from the main board cover. Discard the post and cable.



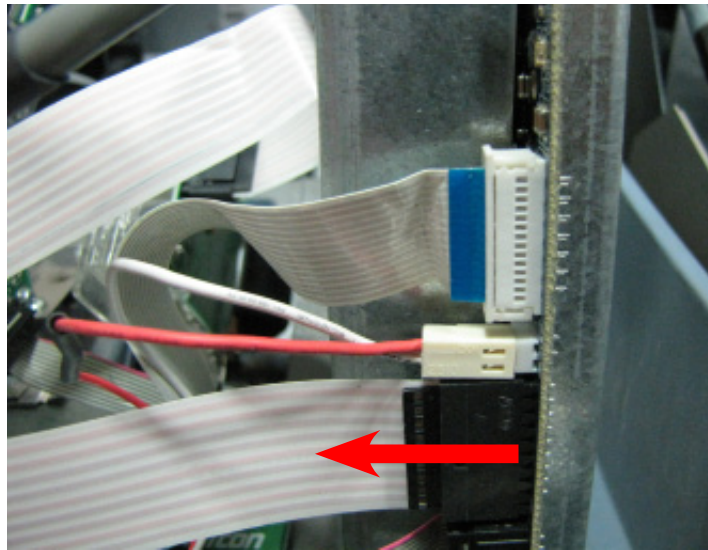
10. Continue to page 5-B10 for installation instructions for Kit P/N 06200-00388 or 06200-00389.

REMOVING THE TRACK 1-2 CARD READER ASSEMBLY

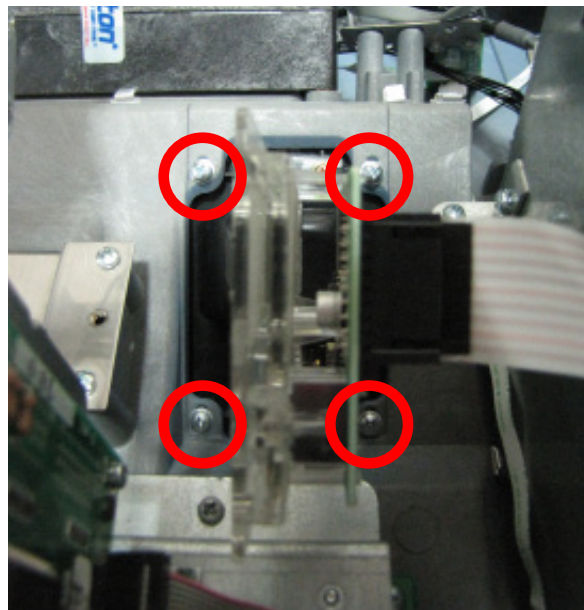
The Card Reader Assembly is located on the control panel.

To remove the card reader assembly, complete the following procedure:

1. Put the ESD wrist strap on and attach the cord to the ground.
2. Unlock and open the upper portion of the cabinet.
3. Turn the power switch on the power supply to the OFF (O) position.
4. Unplug the communication cable from the front of the main board.

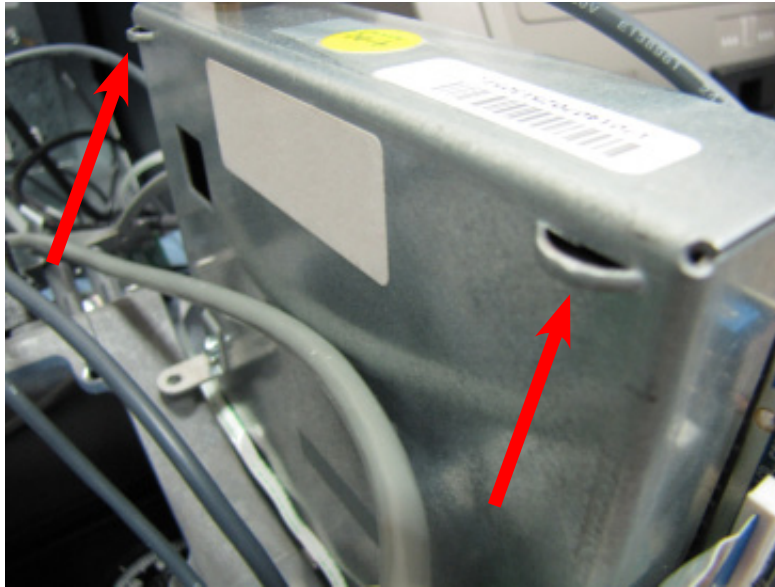


5. While holding the card reader bezel from underneath, remove the four screws securing the card reader. Remove the card reader, with the communication cable still attached, from the control panel. Discard screws, card reader and attached cable.



REMOVING THE TRACK 1-2 CARD READER ASSEMBLY CONT...

6. Cut the TY Wraps holding the printer power cable to the main board cover.

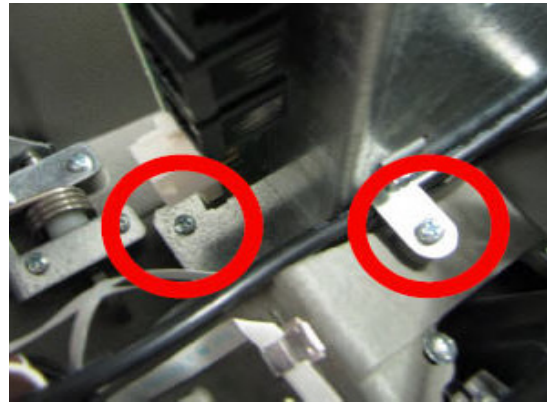


REMOVING THE MODEM AND THE MAIN BOARD

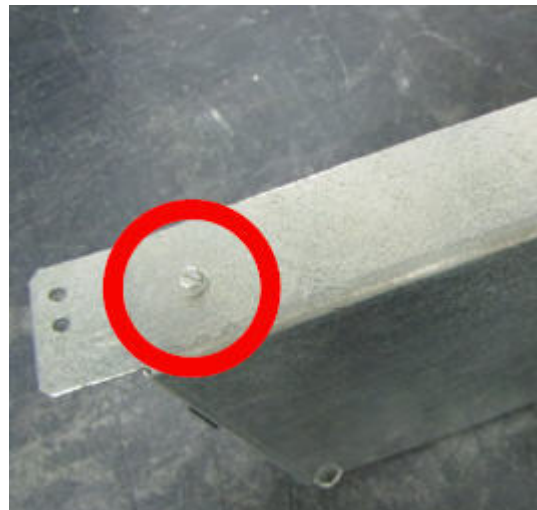
The modem assembly is a field replaceable part that is plugged into a socket on the main board assembly.

To remove the modem assembly complete the following procedure:

1. Remove the three screws that secure the main board assembly to the unit.

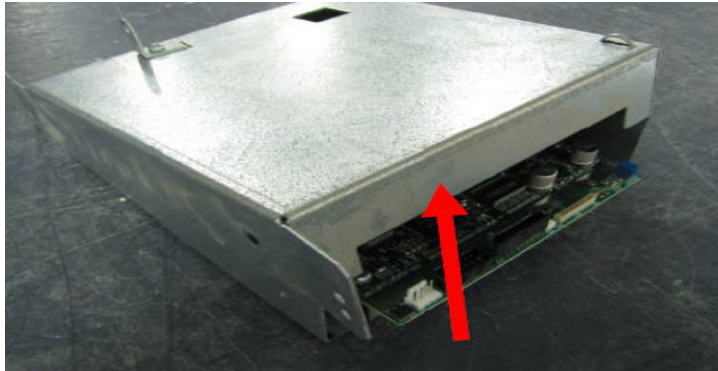


2. Remove the two screws from the top and bottom of the main board assembly. Set the screws aside for reinstallation.



SECTION FIVE

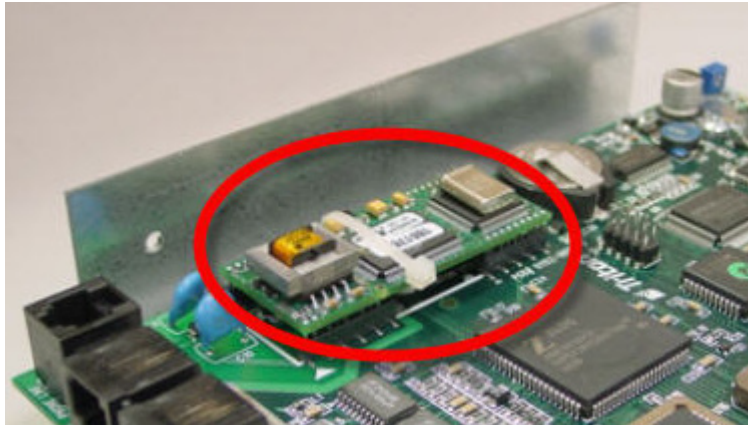
3. Separate the top cover from the main board assembly.



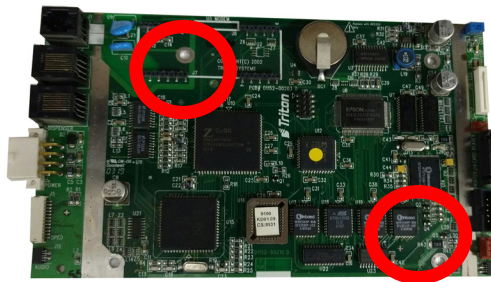
Warning:

Do not insert anything between top cover and main board to pry them apart. Damage may occur to printed circuit board. Physical damage due to mishandling may void warranty for the main board assembly.

4. Locate the modem assembly.



5. Using side-cut pliers, cut and discard the Ty wrap that secures the modem to the main board.
6. Grasp the modem assembly by the outside edges and carefully lift it up and away from main board.
7. Remove two screws securing main board to bottom cover. Set aside for reinstallation.



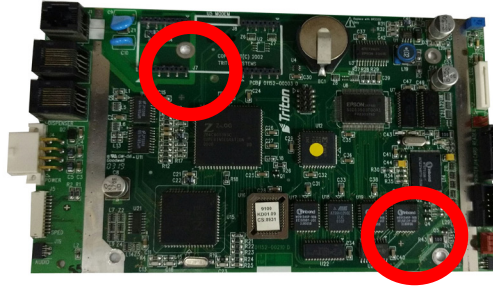
8. Remove main board from cover and set aside to return to Triton.

INSTALLING MODEM ON MAIN BOARD

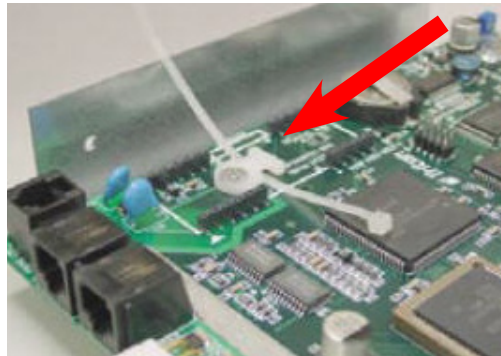
Caution:

If modem is installed incorrectly, damage may occur when power is applied.

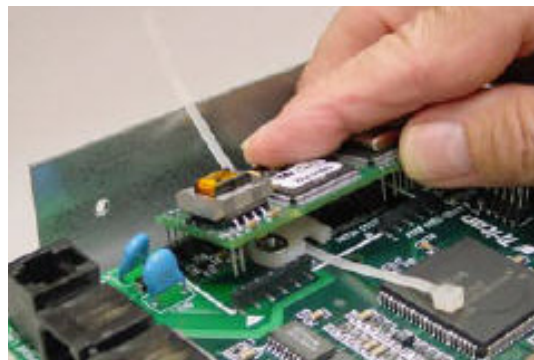
1. Attach main board to bottom cover using the two screws removed during disassembly.



2. Thread black TY Wrap through the slot in the cable anchor on main board.



3. Install modem by pressing straight down into socket as shown below. The end of the modem with two pins should be positioned closest to the jacks on the edge of the main board.



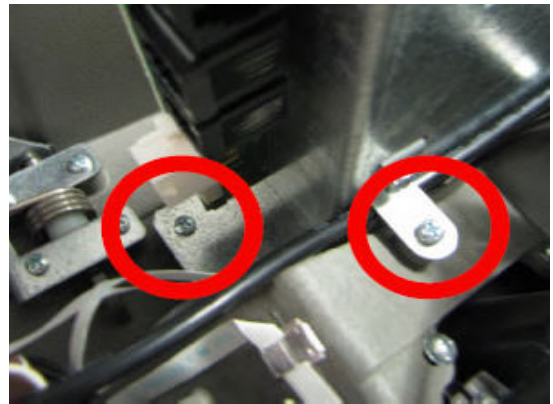
4. Secure modem to main board with TY wrap. Do not over tighten. Trim excess from TY Wrap with side-cut pliers.

SECTION FIVE

5. Replace the top cover on the main board assembly. Secure with screws removed during disassembly.



6. Attach main board assembly and housing to unit with three screws removed during disassembly.

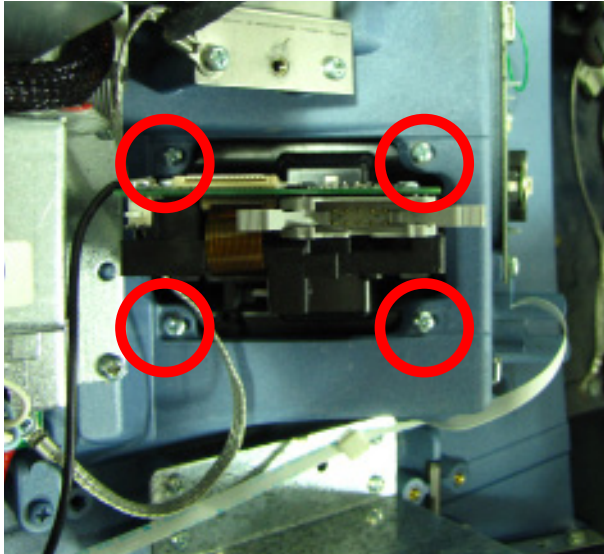


7. Reconnect cables to main board assembly.



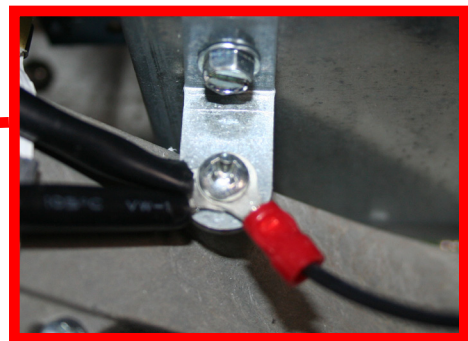
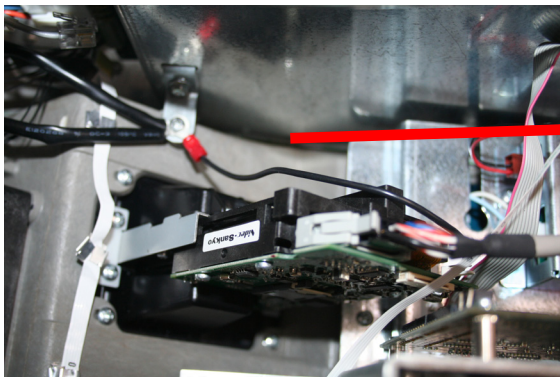
Installing the ICM 330 Card Reader

1. Insert the EMV card reader from the front of the unit. Secure the card reader in place with the 4 screws supplied.



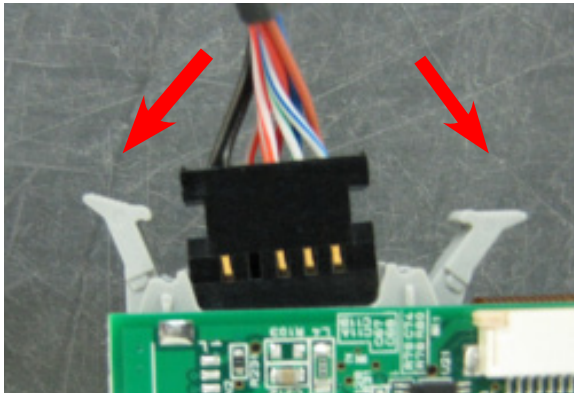
View from Front of Unit
(Triton logo correctly oriented)

2. Remove the screw securing the unit ground wire to the control panel. Install the card reader ground cable onto the screw and reinstall the screw as shown.

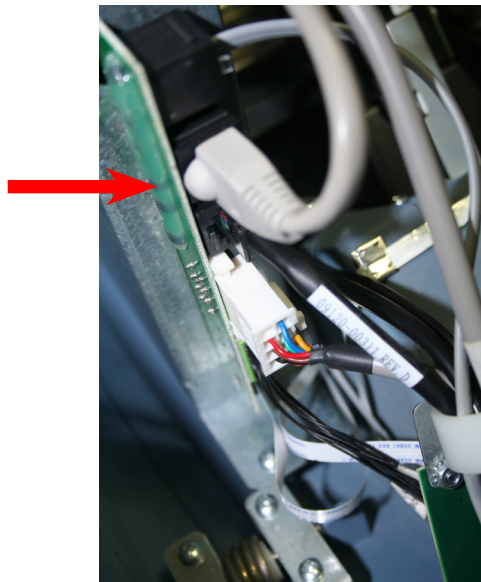


SECTION FIVE

3. Obtain the EMV card reader data cable. Ensure the cable locking tabs on the card reader are in the unlocked position (out). Plug the cable into the card reader. As the cable is inserted into the port, the locking tabs will close over the cable securing it in place.



4. Plug the other end of the card reader cable into J2 of the main board.



6. Loop the card reader cable back on itself to condense the length of the cable. TY Wrap the cable in two spots as shown. Cut off excess TY Wraps.



8. Disconnect ESD wrist strap from ground connection.
9. Turn power supply to the ON (I) position.
7. Configure ATM.
8. Run test transaction.

SECTION 6

EMV 330 CARD READER

UPGRADE

9600

KIT 06200-00252

EMV 330 CARD READER UPGRADE PROCEDURES

TOOLS REQUIRED	2 x #2 Phillips screwdriver (stubby and standard) (Magnetic recommended) ESD wrist strap with grounding cord Small needle nose pliers 7/16 open end wrench
KIT P/N: 06200-00252	EMV ICM330 CARD READER UPGRADE KIT FOR 9600
PARTS SUPPLIED	
DESCRIPTION	QUANTITY
Sankyo 330 EMV Card Reader	1
Sankyo ICM330 Card Reader Cable	1
8 inch Braid Ground Cable	2
Screw #6 x 3/8 Phillips Drive Pan Plastite 48-2 Zinc Plate	4
#8 x 32 - 3/8 Long Standoff	1
Threaded #8 - 32 Thread Snap-in Insert	1
#8 x 32 - 3/8 Long Screw	1

NOTE: This kit includes a Sankyo ICM330 EMV compliant card reader, bezel and applicable cable for each ATM model. The card reader includes an attached ground wire. Ensure the card reader and cabinet ground wires are joined.



Improper grounding may
cause damage to ATM
and/or components.

**** IMPORTANT ****

If the unit intended for upgrade has a Quad-Port Module with one of the following part numbers, the module is **NOT** compatible with the EMV upgrade and must be upgraded.

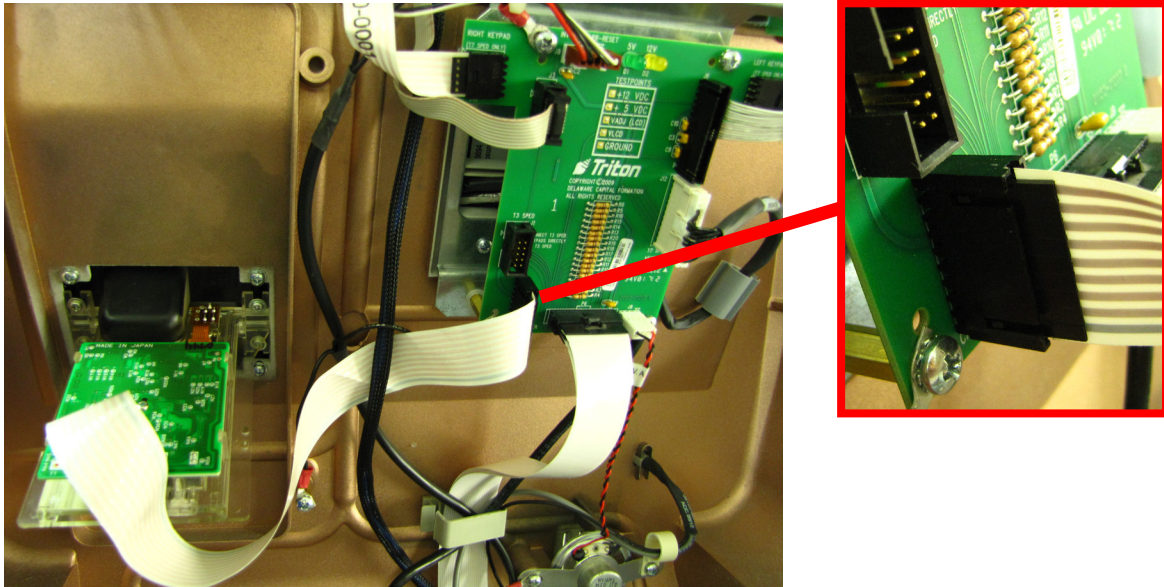
09600-02030

09600-01013

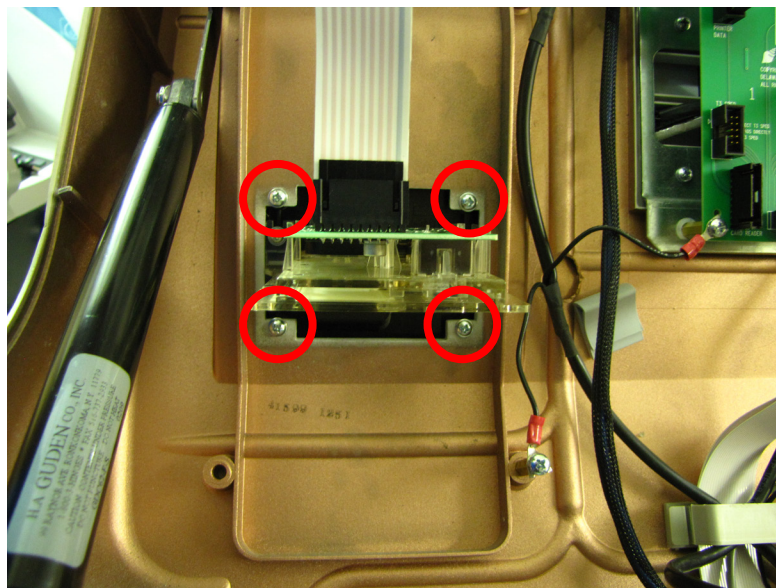
These boards do not have a +12v port available.

Removing the old Card Reader

1. Put the ESD wrist strap on and attach the cord to the ground.
2. Unlock and open the upper portion of the cabinet.
3. Flip the switch on the power supply to the OFF (O) position.
4. Unplug the card reader data cable from the PCI SPED Adapter Board.

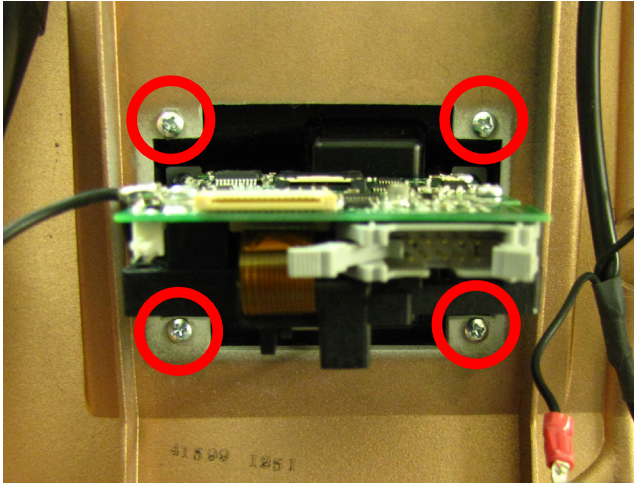


5. While holding the card reader from the front of the control panel, remove the 4 screws that secure it in place. Remove the card reader and card reader data cable.



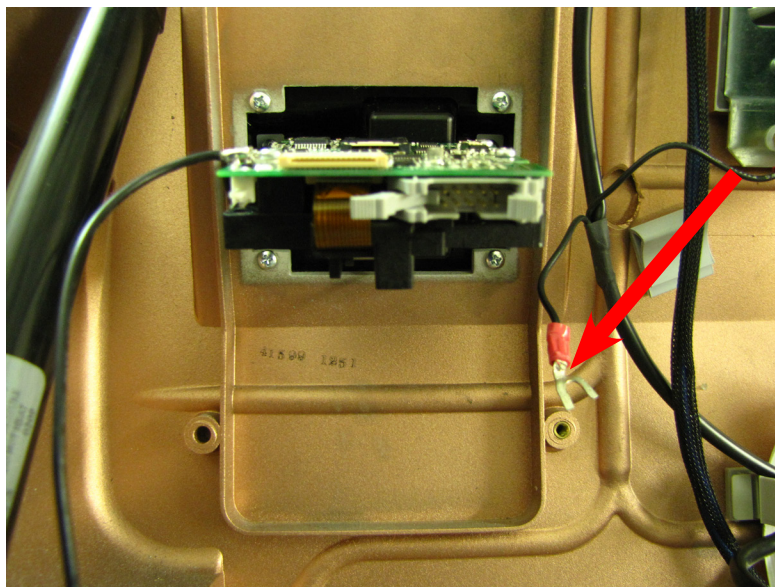
Installing the Sankyo EMV 330 Card Reader

1. Put the ESD wrist strap on and attach the cord to the ground.
2. Unlock and open the upper portion of the cabinet.
3. Flip the switch on the power supply to the OFF (O) position.
4. Insert the EMV card reader from the front of the unit. Secure the card reader in place with the 4 screws supplied.



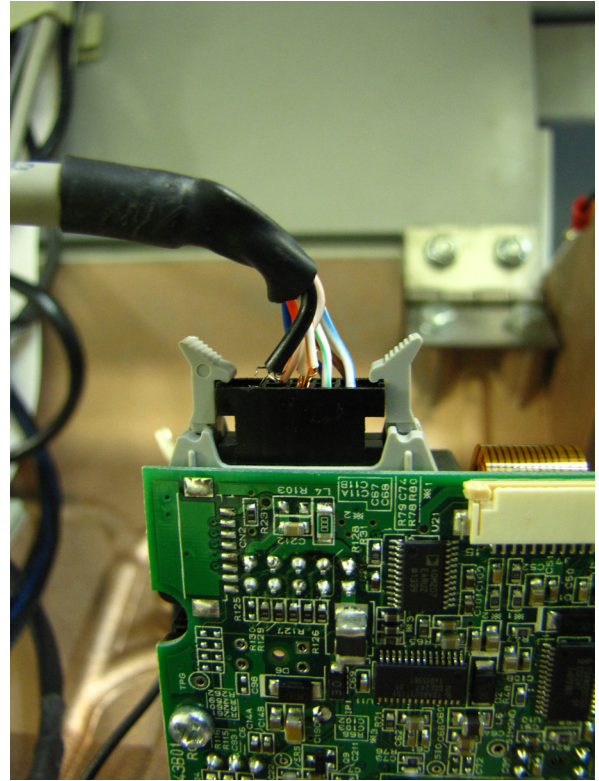
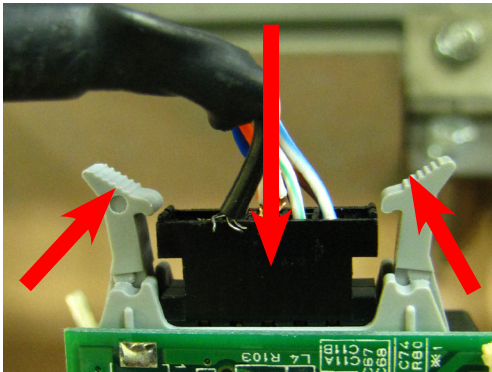
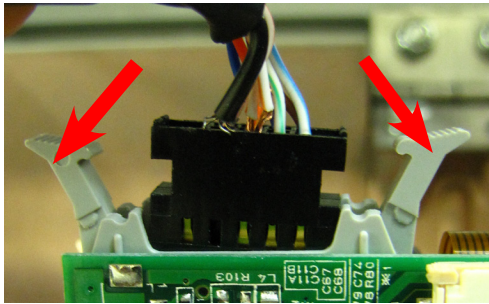
View from Front of Unit
(Triton logo correctly oriented)

5. Remove the screw securing the unit ground wire to the control panel. Discard the screw.

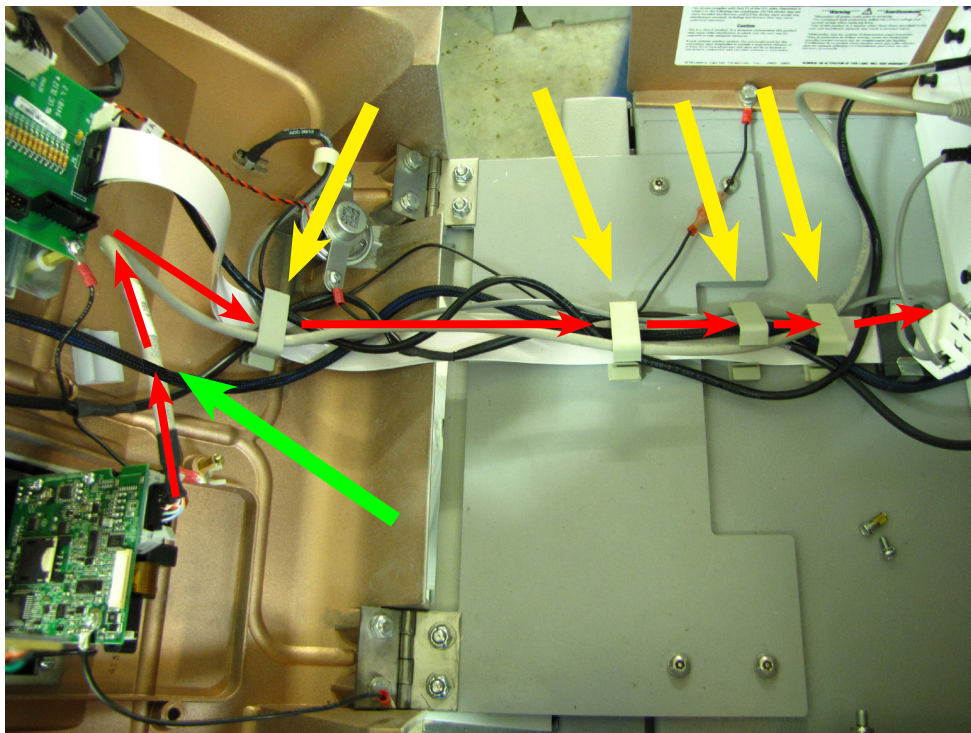


EMV 330 CARD READER UPGRADE PROCEDURES

- Obtain the EMV card reader data cable. Ensure the cable locking tabs on the card reader are in the unlocked position (out). Plug the cable into the card reader. As the cable is inserted into the port, the locking tabs will close over the cable securing it in place.

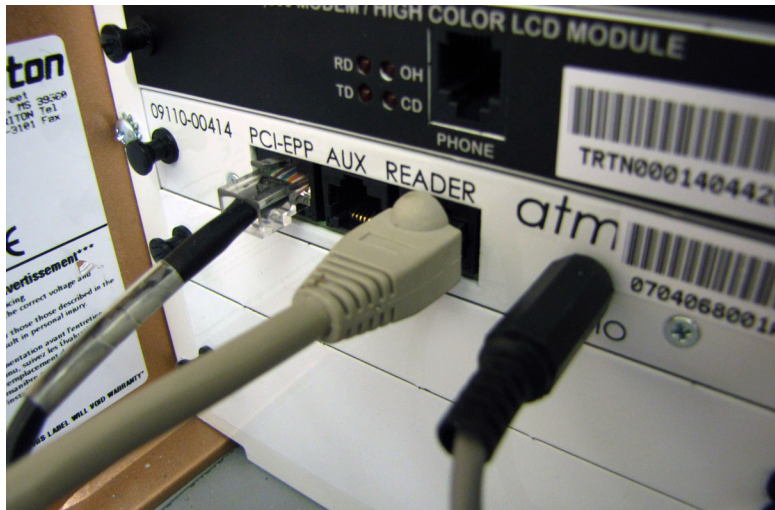


- Open the four cable clips (yellow arrows). Route the card reader cable (red arrows) under the printer power cable (green arrow) and through the four cable clips as shown. Close the clips to secure the cables.

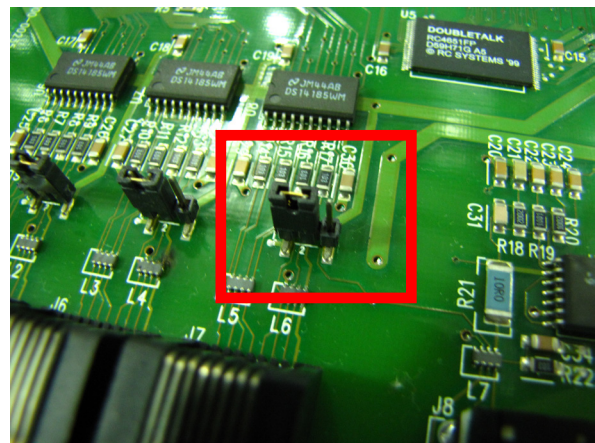
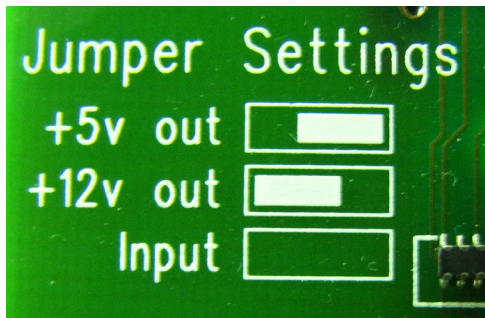


SECTION SIX

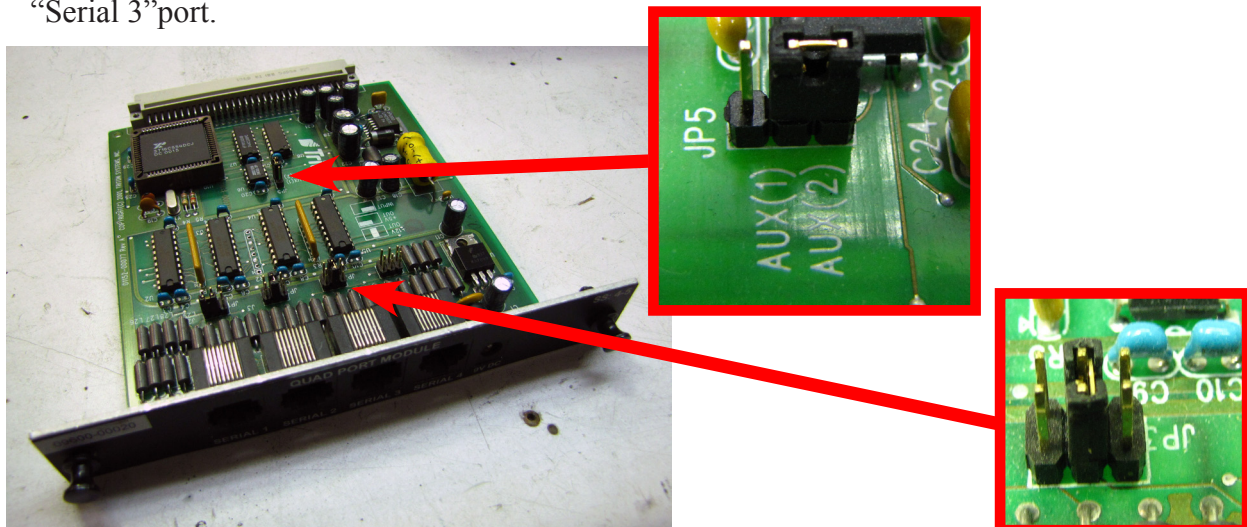
8. Plug the EMV card reader cable into the module. If the module is a Multi-Function board with part numbers 09110-00414 or 09110-01414, plug the card reader cable into the port labeled “Reader”.



- If the module is a Tri-Port module with part number 09110-00235, set the J4 jumper to the “+12v” position. Plug the card reader cable into the “Serial 3” port.



- If the module is a Quad-Port module with part numbers 09600-00020 or 09600-00044, set the JP5 jumper to “Aux (2)” position and the JP3 jumper to the “+12v” position. Plug the card reader cable into the “Serial 3” port.

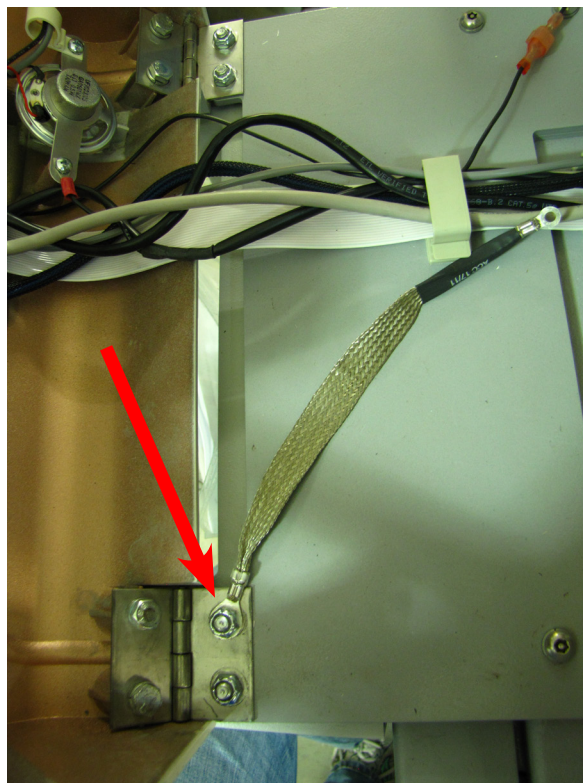


EMV 330 CARD READER UPGRADE PROCEDURES

9. Unlock and pull out the Memory Module board. Ensure the EPROM chip is version SD04.00 or higher to be compatible. (Updated EPROM chips are available on www.ATMGurus.com.)

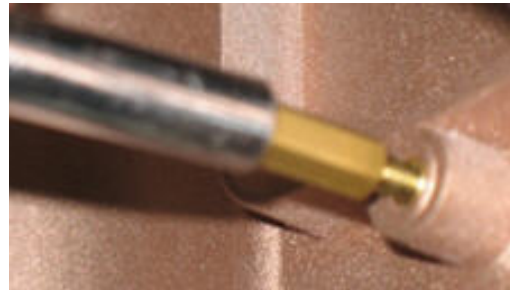
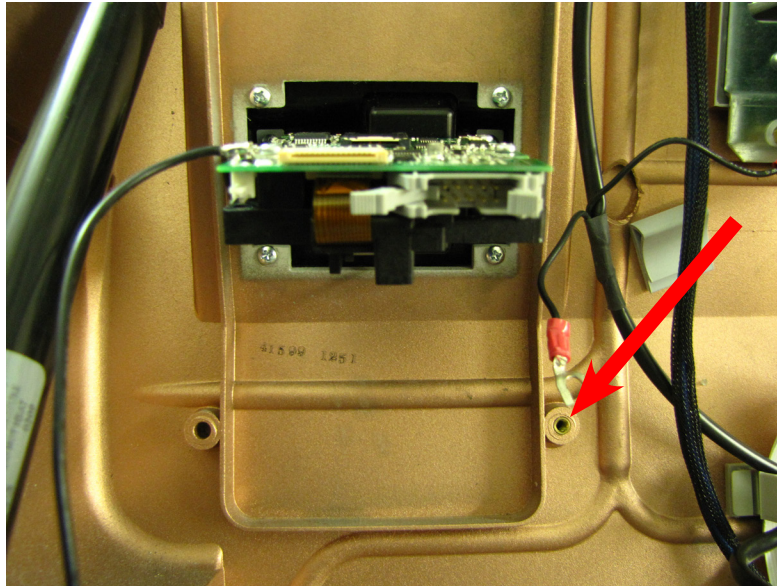


10. Obtain one ground cable. Remove one of the nuts securing the control panel bracket. Install one end of the ground cable onto the post and reinstall the nut.

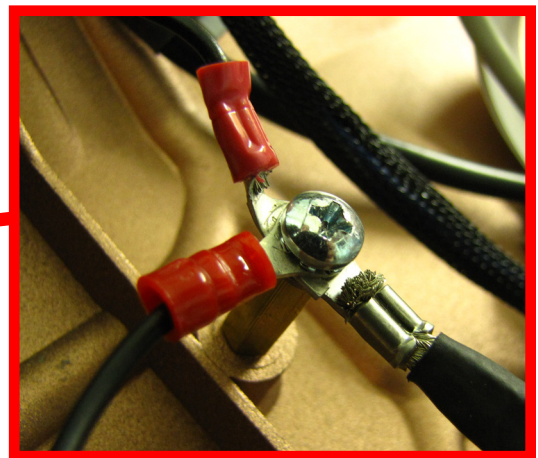
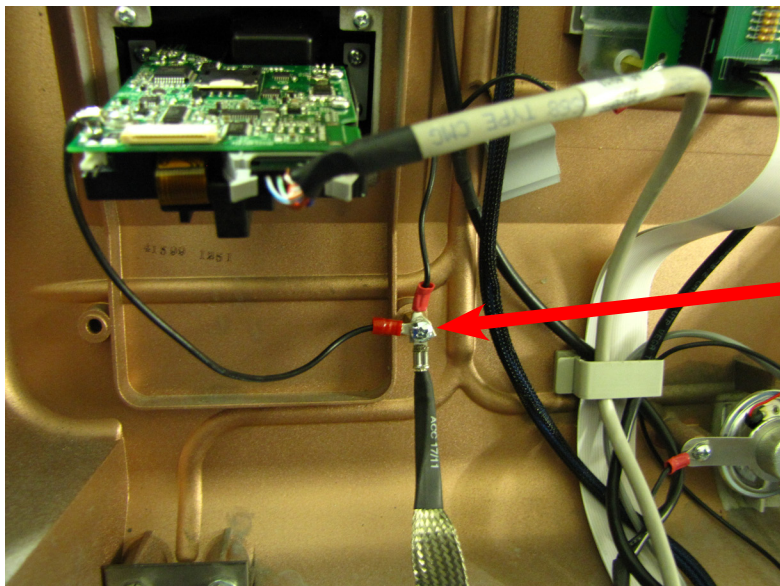


SECTION SIX

11. Obtain the 3/8 standoff, threaded snap-in insert & the 3/8 long screw. Install the threaded snap-in insert into the control panel. Screw the stand off into the snap-in insert as shown.

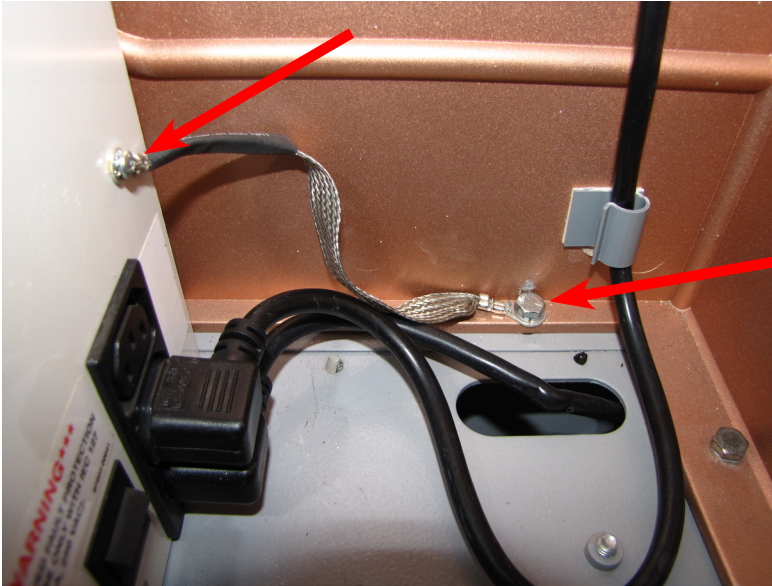


12. Install the three ground cables onto the 3/8 long screw as shown and install the screw into the insert previously installed.



EMV 330 CARD READER UPGRADE PROCEDURES

13. Obtain the second ground cable. Remove the bolt and washer along the rear wall in the rear right corner. Install the ground wire under the washer and reinstall the bolt into the cabinet. Remove the screw from the card cage and secure the other end of the ground cable as shown.



14. With the unit's power still OFF, check the resistance of the grounded points. Place one ohmmeter probe on the screw securing the ground cable to the card cage and place the other probe on the screw securing the unit's three ground cables to the control panel. The resistance should measure less than 1 ohm.

