



LIGHTED HIGHTOPPER

FIELD INSTALLATION GUIDE

MODELS 97XX AND RL5000 (X-SCALE/XP)

VERSION 3.0
TDN 07103-00144C 08/2006



CORPORATE HEADQUARTERS:

522 E. Railroad Street
Long Beach, MS 39560
Phone: (228) 868-1317
Fax: (228) 868-0437

**RMA (RETURN MATERIAL AUTHORIZATION)
RETURN ADDRESS:**

21405 Avenue "B"
Long Beach, MS 39560

COPYRIGHT NOTICE

© 2003-2006 Delaware Capital Formation, Inc. All Rights Reserved. Triton Systems of Delaware Inc. is an operating company of Dover Electronics, Inc., a subsidiary of Dover Corporation (NYSE-DOV). DOVER, the DOVER logo and the Dover family of marks and TRITON, the TRITON logo and the Triton family of marks are registered trademarks of Delaware Capital Formation, Inc., a wholly owned subsidiary of Dover Corporation.

IMPORTANT NOTICE

Triton Systems has discontinued offering a ballast/bulb (AC-powered) hightopper signage for production model RL5000 (X-Scale/XP) units. LED-lit (DC-powered) signage will be the **only** available option.

The AC-powered toppers will be available for field replaceable parts and repair until inventory is depleted.

This manual will show the installation of the topper as well as the power connections for both powered signage.

NOTE

Although the majority of figures in this procedure depict a model RL5000 ATM, the installation instructions are applicable to 97XX model ATMs as well. Any significant differences will be noted in the text and/or figures, as applicable.

Hightopper Installation Procedure

These procedures are completed with the terminal power OFF.

1. Remove the topper assembly from the shipping container.
2. Unlock and open the ATM control panel.
3. You will need to remove the 2 corner panels located on the control panel (If panels have been removed, proceed to **Step 6**).
4. **(Figure 1)** Locate the silver brackets on the inside top corners of the control panel. Using a Philips screwdriver, remove the 3 screws (black lines) that secure the brackets. Remove brackets
5. Remove the 2 lower screws (white lines) and remove the corner panels. **See Figure 2 and Note.**
6. Install the six (6) #8-32 x 3/8" screws (supplied) into the cabinet mounting bracket. **DO NOT TIGHTEN**. Leave approximately 1/8" of thread exposed **(Figure 3)**.
7. Mount the topper on the screws using the slots on the legs. Let the topper slide down until it rests in the narrow portion. Tighten all screws **(Figure 4)**.



Figure 1. Corner bracket screw location.

NOTE

Current production RL5000's (X-Scale) have a mounting bracket that secures the USB modem (Figure 2). After removal of the corner panels, resecure the mounting bracket with these 2 screws.



Figure 2. USB modem bracket (RL5000).



Figure 3. Screws started, not tightened.

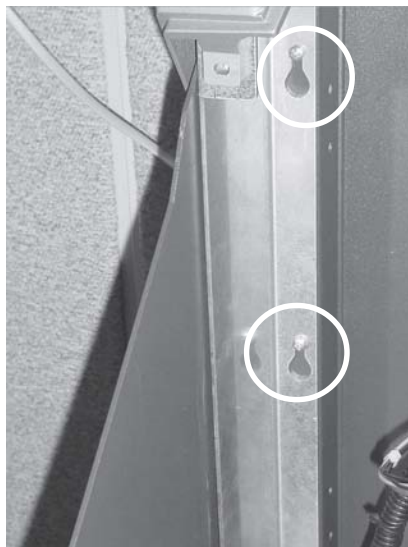


Figure 4. Slotted mounting holes.

8. Connect the topper power cord. **Ensure the ATM power is turned OFF before connecting!**

DC CONNECTIONS (LED-LIT TOPPER)

Plug the DC power cord (molex connector) from the topper into any available DC output connector on the power supply (***see Notes**) as shown in **Figures 5a-5c**.

¹**Note:** The dispensing mechanism uses the largest molex connection on the power supply.

²**Note: Model RL5000XP only.** The DC power cord may be an 8-pin or 2-pin molex connector. The 8-pin connects to the power supply (Figure 5c) and the 2-pin connects to the GPIO board assembly (Figure 5d).

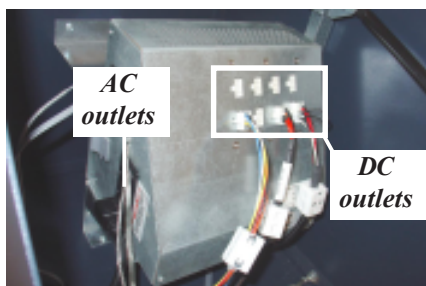


Figure 5a. Model 97XX.

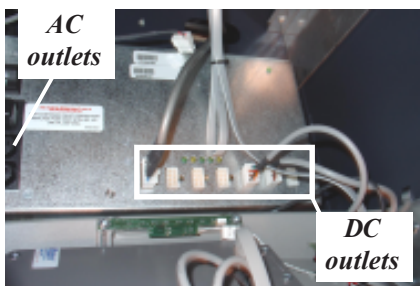


Figure 5b. Model RL5000 (X-Scale).



Figure 5c. Model RL5000 (XP)



Figure 5d. Model RL5000 (XP)

AC CONNECTIONS (BALLAST/BULB TOPPER)

Plug the AC power cord from the topper into the AC output connector on the power supply. See **Figures 5a and 5b**.

9. Route the power cable along the backside of the mounting bracket and secure with ty wraps, if needed. **Figures 6 and 7** show cable routing for old and new cabinet mounting brackets.

Note: *Figure 6 shows older style mounting bracket. Figure 7 (and insert) shows current mounting bracket.*



Figure 6. Route power cable behind bracket.



Figure 7. Route power cable behind bracket and secure with ty wraps.

10. Turn the power supply to ON (I). The topper sign should light up. Close and lock the control panel.

Instructions for Checking the Topper Light Bulb (AC-powered only)

1. Lay the Topper on a flat surface, rear side down, as shown in **Figure 1**. Unlock the topper sign panel and lift the sign panel up. It may be necessary to tilt the assembly to keep the panel opened.
2. Locate the light bulb (**Figure 2**). The best way to ensure the bulb is firmly seated in the socket is to carefully remove and then reseal the bulb.
***Note:** If the bulb is bad, carefully remove the existing bulb and replace with a new bulb.*
3. Close and lock the sign panel.



Figure 1. Topper sign panel opened..



Figure 2. Location of light bulb.