

SUBJECT:
CHANGING NMD CASSETTE SETTINGS

TECHNICAL TIP: 17-21
DATE: DECEMBER 06, 2017

Confidential - Available to all authorized Triton distributors and third party service providers

TRITON TECHNICAL TIP - CHANGING NMD CASSETTE SETTINGS

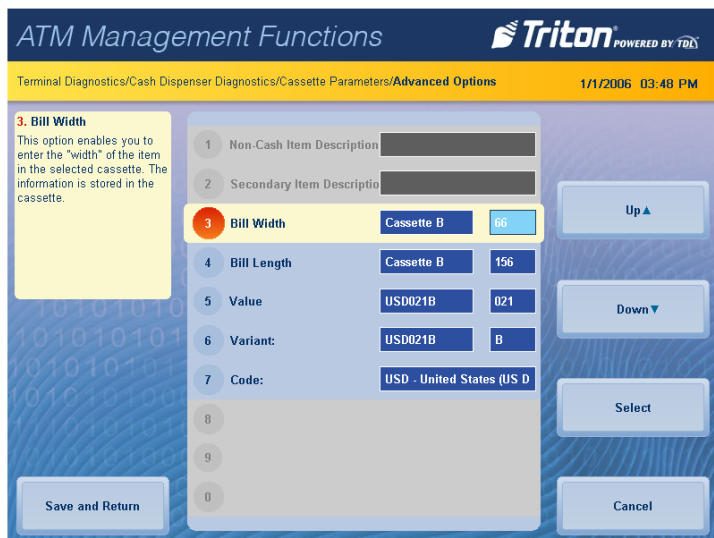
Triton recommends changing the variant on any ATM equipped with an NMD 50 or NMD 100 dispenser from 1 to _ (underscore). Triton also recommends adjusting the height settings to H-I-10 on US NMD cassettes which have experienced pick errors in the field. All new and refurbished US NMD 50 & NMD 100 cassettes will be shipped with these settings.

To change cassette variant on ATMs running 4.1 software, perform the following:

****Note****

This function must be performed at the ATM with cassettes locked. Directions may vary slightly by ATM model, LCD display, etc.

1. Navigate to *Management Functions > Diagnostics > Dispenser > Cassette Parameters*.
2. Select **Active Cassette** to choose desired cassette.
3. Select **Advanced Options**.
4. Verify the variant code option is filled with an underscore. To change, touch the variant field.



ATM Management Functions **Triton** POWERED BY TDL

Terminal Diagnostics/Cash Dispenser Diagnostics/Cassette Parameters/Advanced Options 1/1/2006 03:48 PM

3. Bill Width
This option enables you to enter the "width" of the item in the selected cassette. The information is stored in the cassette.

1 Non-Cash Item Description	
2 Secondary Item Description	
3 Bill Width	Cassette B 66
4 Bill Length	Cassette B 156
5 Value	USD021B 021
6 Variant:	USD021B B
7 Code:	USD - United States (US D
8	
9	
0	

Up ▲ Down ▼ Select Cancel Save and Return



ATM Management Functions **Triton** POWERED BY TDL

Terminal Diagnostics/Cash Dispenser Diagnostics/Cassette Parameters/Advanced Options/Variant Cx 1/1/2006 12:32 PM

Variant Code
Enter the new variant code.

◀ Left ▶ Right

Backspace Enter and Return

1	2	3	4	5	6	7	8	9	0	-	=
q	w	e	r	t	y	u	i	o	p	[]
a	s	d	f	g	h	j	k	l	;	'	\
z	x	c	v	b	n	m	,	.	/	`	
Shift	New Line	Space	~a€	Shift							

Change Keyboard Style Cancel

5. Use the on-screen keyboard to insert an underscore. To enter an underscore on the keyboard, select **Shift**, then the **_** key in the top, right of keyboard.
6. Select **Enter and Return** to return to previous screen, then Select **Save and Return**.

The left screenshot shows the 'Variant Code' screen. It has a title bar 'ATM Management Functions' and a sub-header 'Terminal Diagnostics/Cash Dispenser Diagnostics/Cassette Parameters/Advanced Options/Variant Cr'. The main area has a box 'Enter the new variant code.' with a text input field. Below it is a numeric keypad with symbols like !, @, #, \$, %, ^, &, *, (,), -, +. There are buttons for '< Left', '> Right', 'Backspace', 'Enter and Return', 'Shift', 'New Line', 'Space', and 'Cancel'. A 'Change Keyboard Style' button is on the right.

The right screenshot shows the 'Advanced Options' screen. It has a title bar 'ATM Management Functions' and a sub-header 'Terminal Diagnostics/Cash Dispenser Diagnostics/Cassette Parameters/Advanced Options'. The main area has a list of settings: 1 Non-Cash Item Description, 2 Secondary Item Description, 3 Bill Width (Cassette A, 66), 4 Bill Length (Cassette A, 156), 5 Value (USD021, 021), 6 Variant (USD021, _), 7 Code (USD - United States (US D)). The 'Variant' field is highlighted with a red circle and a red arrow pointing to it. There are buttons for 'Up', 'Down', 'Select', 'Save and Return', and 'Cancel'.

7. Follow the on-screen instructions to put cassette back into service.
8. Repeat for each installed cassette.

To change cassette variant on ATMs running 4.0 software or earlier, perform the following:

****Note****

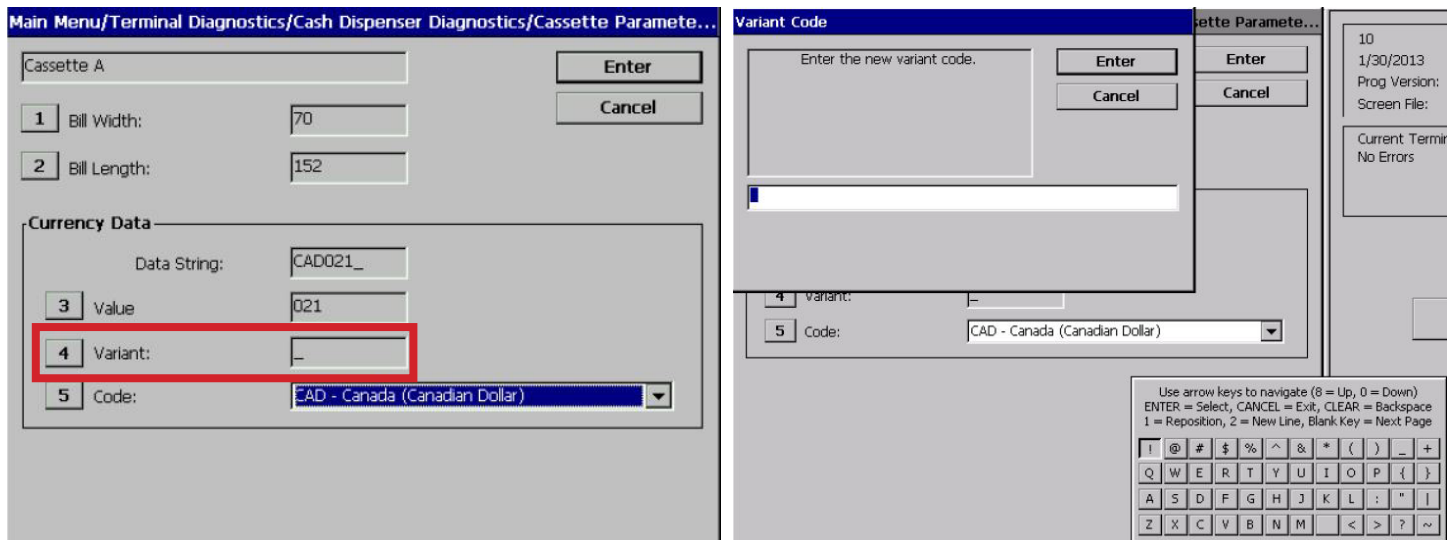
This function must be performed at the ATM with cassettes locked. Directions may vary slightly by ATM model, LCD display, etc.

1. Navigate to *Management Functions > Diagnostics > Dispenser > Cassette Parameters*.
2. Select **Active Cassette** to choose desired cassette.
3. Select **Note Configuration**.

The left screenshot shows the 'Cassette Parameters' screen. It has a title bar 'Main Menu/Terminal Diagnostics/Cash Dispenser Diagnostics/Cassette Parameters'. The main area has a list of settings: 1 Relearn Bill Thickness, 2 All Cassettes Locked, 3 Retract Cash, 4 Retract Delay (45), 5 Active Cassette (Cassette A), 6 Cassette Status (Cassette Low), 7 Cassette In Service, 8 Multiple Amount (\$10.00), 9 Document Type (Cash, Non-Cash), 10 Non-Cash Item Description, 11 Secondary Item Description, and F1 Note Configuration. A red arrow points to the 'Note Configuration' button.

The right screenshot shows the same screen. It has a title bar 'Main Menu/Terminal Diagnostics/Cash Dispenser Diagnostics/Cassette Parameters'. The main area has a list of settings: 1 Relearn Bill Thickness, 2 All Cassettes Locked, 3 Retract Cash, 4 Retract Delay (45), 5 Active Cassette (Cassette A), 6 Cassette Status (Cassette Low), 7 Cassette In Service, 8 Multiple Amount (\$10.00), 9 Document Type (Cash, Non-Cash), 10 Non-Cash Item Description, 11 Secondary Item Description, and F1 Note Configuration. A red arrow points to the 'Note Configuration' button.

4. Verify the variant code option is filled with an underscore. To change, select **4 Variant:**



5. Use the on-screen keyboard to enter an underscore, then select **Enter**.

6. Follow any on-screen instructions to put cassette back into service.

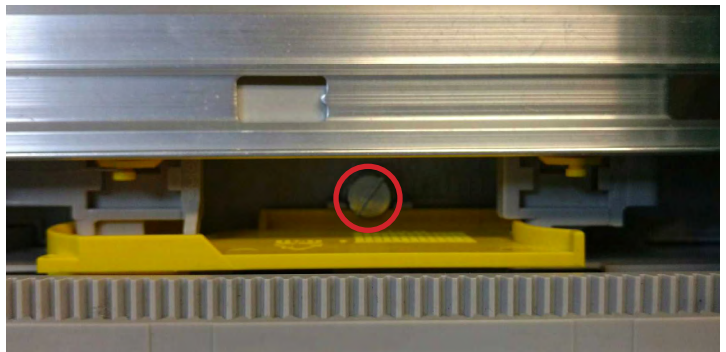
7. Repeat for each installed cassette.

To change the NMD cassette height settings, perform the following:

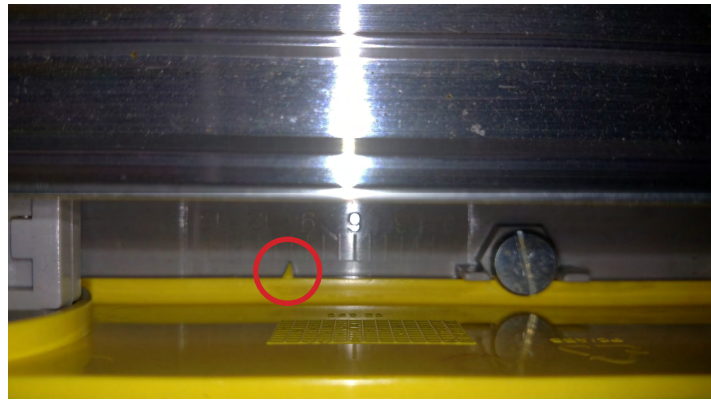
Caution

Management Functions will not time out while cassettes are unlocked. Do not leave the ATM unattended during this process. Directions may vary slightly by ATM model, LCD display, etc.

1. Navigate to *Management Functions > Diagnostics > Dispenser > Cassette Parameters*.
2. Select **All Cassettes Locked** to unlock (no check mark) cassettes, then remove cassette.
3. Open cassette and move pusher plate toward the handle.
4. Using a flat head screwdriver, loosen the screws that hold the yellow height guides in place on each side of cassette.



5. Move height guides until arrows on both sides point to the 10 mark.
6. Using a flathead screwdriver, tighten the screws that hold the yellow height guides in place on each side of cassette.



7. Load notes into cassette and move pusher plate back into position.
8. Extend pawls, then close and insert cassette into dispenser.
9. Repeat for each installed cassette.
10. Lock all cassettes to put ATM back into service.



If you have questions regarding this Technical Bulletin, please contact Technical Support at 1-228-575-3100, option 4 or toll free in the U.S. / Canada 1-866-787-4866, option 4. Visit www.tritonatm.com for additional information. For all ATM parts, repair, and training needs, visit www.atmgurus.com.