

ATM INSTALLATION FOR ACCESSIBILITY

A GUIDE TO ADA/ABA ACCESSIBILITY GUIDELINES

WARNING

- This document supersedes all other information provided by Triton for ATM Installation for accessibility.
- Information provided in these guidelines is based on federal regulations. Customers should verify federal regulations have not been amended. Each state and/or province may also have accessibility codes. These codes may be more restrictive than the federal guidelines. Please verify with the state and/or province prior to installation. For state contact information, call the ADA (Americans with Disabilities Act) information line at 1-800-514-0301 (or 1-800-514-0383 for TTY).
- For countries other than the U.S., please use the guidelines for accessibility in country of ATM installation.
- A complete copy of the ADAAG referred to in this document can be found at <http://www.access-board.gov>. Included in this document are the ADA guidelines specifically relating to ATMs. For additional information on floor surfaces and other ADA requirements, please see complete specification.

The ADA standards are issued by the Department of Justice (DOJ) and the Department of Transportation (DOT) and apply to facilities covered by the ADA in new construction and alterations. DOJ standards apply to all facilities covered by the ADA, except public transportation facilities, which are subject to DOT standards. Both standards are very similar and are closely based on the Board's ADA Accessibility Guidelines (ADAAG). However, each contains a few unique provisions and customers are encouraged to research the complete ADAAG before ATM installation.

Existing Facilities

The ADA guidelines cover new construction and planned alterations, and generally do not apply to existing facilities except where altered. Facilities built or altered according to earlier versions of the ADA standards will not necessarily have to meet updated version except where they are subsequently altered or renovated. The DOJ, which regulates requirements for existing facilities under the ADA, intends to address coverage of facilities built or altered according to the original ADA standards in its rule making to update the standards. It will also address facilities retrofitted under ADA provisions for existing facilities, such as the requirement for barrier removal in places of public accommodation. With respect to ABA (Architectural Barriers Act) facilities, the Board has clarified in the guidelines that facilities built to earlier ABA standards are subject to the new requirements only in relation to planned alterations. Please check the ADA website for current guidelines.

WARNING

This document is not meant to be a comprehensive representation of ADA guidelines, and focuses largely on clear floor space requirements when installing an ATM. Additional steps may need to be taken to ensure your location is fully ADA compliant.

3.5 Clear Floors and Ground Space

305.2 Floor or Ground Surfaces. Floor or ground surfaces of a clear floor or ground space shall comply with 302. Changes in level are not permitted.

EXCEPTION: Slopes not steeper than 1:48 shall be permitted.

305.3 Size. The clear floor or ground space shall be 30 inches (760 mm) minimum by 48 inches (1220 mm) minimum.

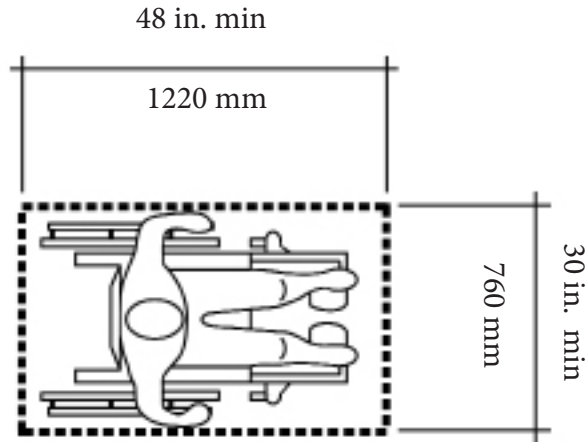


Figure 305.3 Clear Floor or Ground Space

305.4 Knee and Toe Clearance. Unless otherwise specified, clear floor or ground space shall be permitted to include knee and toe clearance complying with 306.

305.5 Position. Unless otherwise specified, clear floor or ground space shall be positioned for either forward or parallel approach to an element. For a forward approach to an element, a clear floor or ground space, 30 inches by 48 inches (760 mm by 1220 mm) minimum, is shown with the shorter dimension parallel to the wall or element. For a parallel approach to an element, a clear floor or ground space, 30 inches by 48 inches (760 mm by 1220 mm) minimum, is shown with the longer dimension parallel to the wall or element.

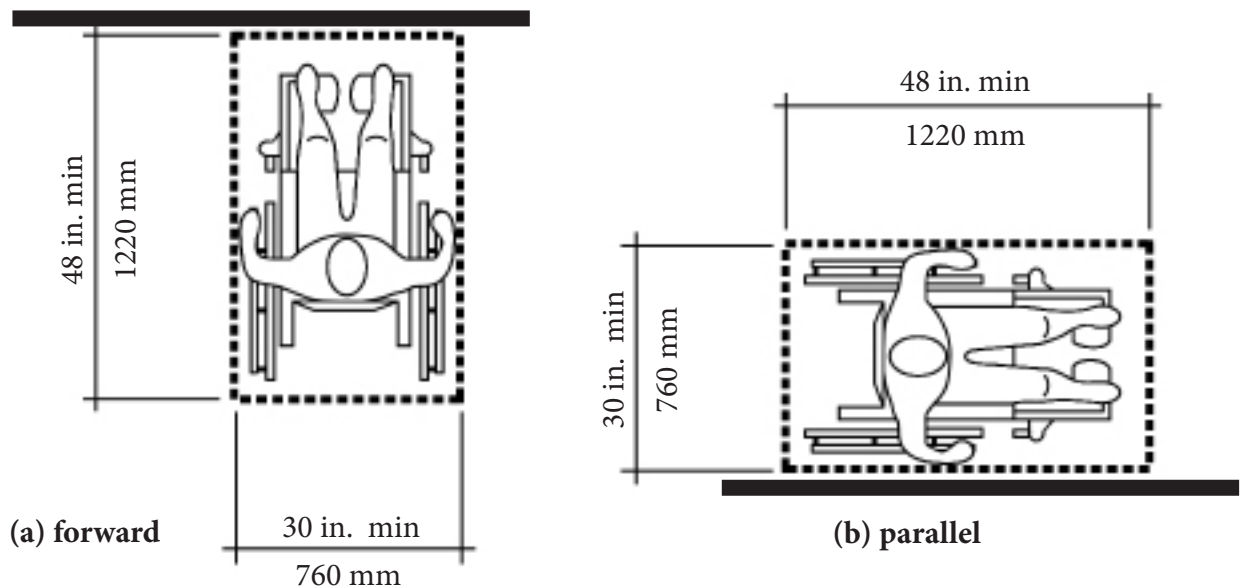


Figure 305.5 Position of Clear Floor or Ground Space

305.6 Approach. One full unobstructed side of the clear floor or ground space shall adjoin an accessible route or adjoin another clear floor or ground space.

305.7 Maneuvering Clearance. Where a clear floor or ground space is located in an alcove or otherwise confined on all or part of three sides, additional maneuvering clearance shall be provided in accordance with 305.7.1 and 305.7.2.

305.7.1 Forward Approach. Alcoves shall be 36 inches (915 mm) wide minimum where the depth exceeds 24 inches (610 mm). For a forward approach, if the depth of the alcove is greater than 24 inches (610 mm), the clear floor or ground space within the alcove must be 36 inches (915 mm) wide minimum.

305.7.2 Parallel Approach. Alcoves shall be 60 inches (1525 mm) wide minimum where the depth exceeds 15 inches (380 mm). For a parallel approach, if the depth of the alcove is greater than 15 inches (380 mm), then the length of the clear floor or ground space within the alcove must be 60 inches (1525 mm) minimum.

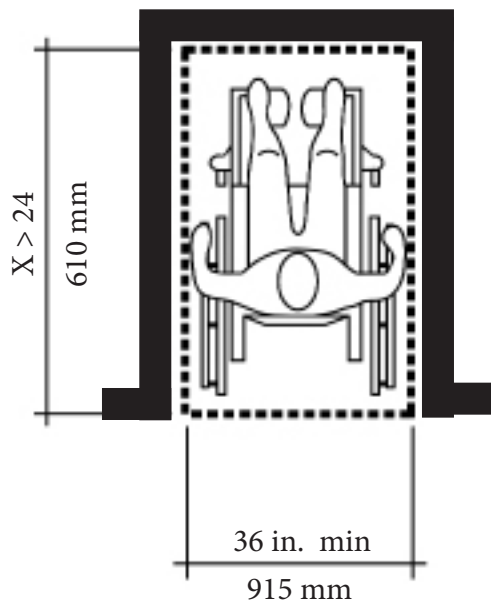


Figure 305.7.1 Maneuvering Clearance in an Alcove, Forward Approach

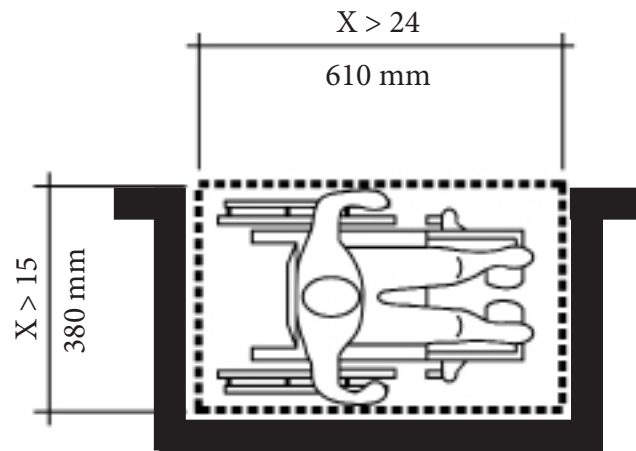


Figure 305.7.2 Maneuvering Clearance in an Alcove, Parallel Approach

308. Reach Ranges.

308.2 Forward Reach.

308.2.1 Unobstructed. Where a forward reach is unobstructed, the high forward reach shall be 48 inches (1220 mm) maximum, and the low forward reach shall be 15 inches (380 mm) minimum above the finish floor or ground.

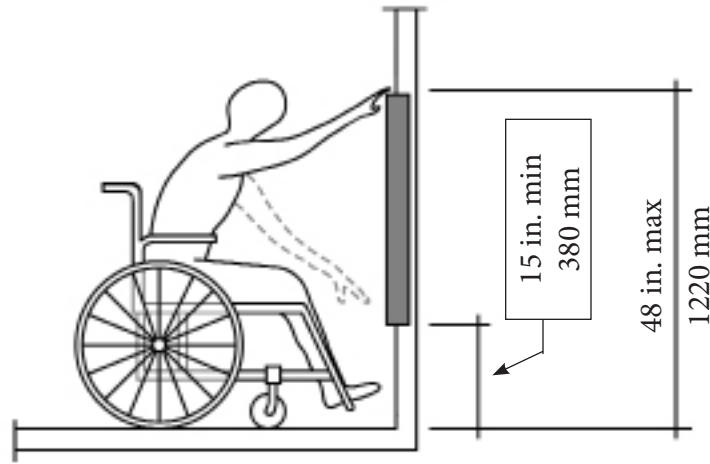


Figure 308.2.1 Unobstructed Forward Reach

3.8.2.2 Unobstructed High Reach. Where a high forward reach is over an obstruction, the clear floor space shall extend beneath the element for a distance not less than the required reach depth over the obstruction. The high forward reach shall be 48 inches (1220 mm) maximum where reach depth is 20 inches (510 mm), the high forward reach shall be 44 inches (1120 mm) maximum and the reach depth shall be 25 inches (635 mm) maximum.

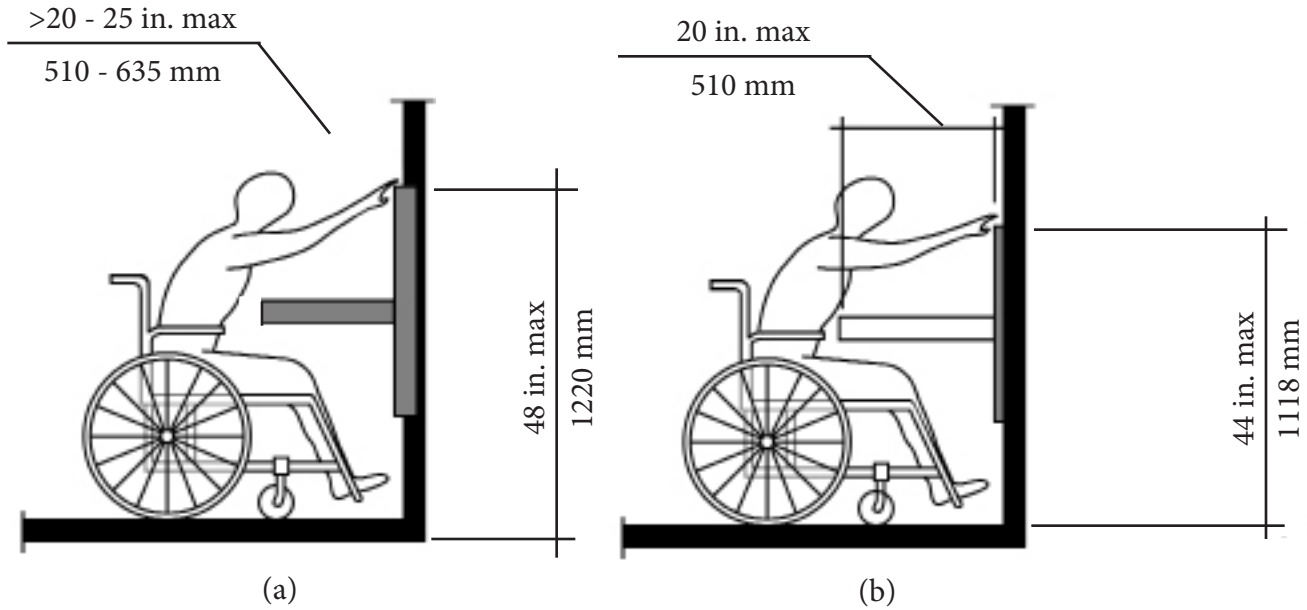


Figure 308.2.2 Obstructed High Forward Reach

3.8.3 Side Reach.

308.3.1 Unobstructed. Where a clear floor or ground space allows a parallel approach to an element and the side reach is unobstructed, the high side reach shall be 48 inches (1220 mm) maximum and the low side reach shall be 15 inches (380 mm) minimum above the finish floor or ground.

Exceptions:

1. An obstruction shall be permitted between the clear floor or ground space and the element where the depth of the obstruction is 10 inches (255 mm) maximum.

2. Operable parts of fuel dispensers shall be permitted to be 54 inches (1370 mm) maximum measured from the surface of the vehicular way where fuel dispensers are installed on existing curbs.

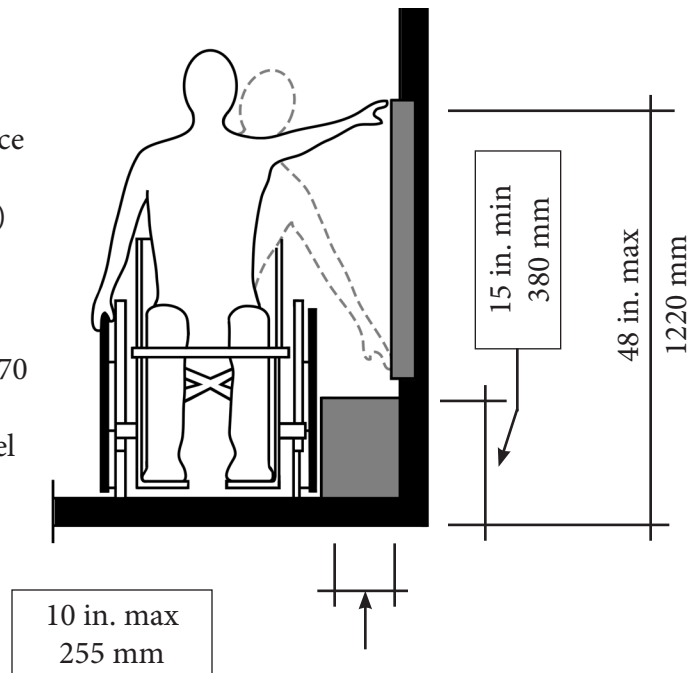


Figure 308.3.1 Unobstructed Side Reach

308.3.2 Obstructed High Reach. Where a clear floor or ground space allows a parallel approach to an element and the high side reach is over an obstruction, the height of the obstruction shall be 34 inches (865 mm) maximum and the depth of the obstruction shall be 24 inches (610 mm) maximum. The high side reach shall be 48 inches (1220 mm) maximum for a reach depth of 10 inches (255 mm) maximum. Where the reach depth exceeds 10 inches (255 mm), the high side reach shall be 46 inches (1170 mm) maximum for a reach depth of 24 inches (610 mm) maximum.

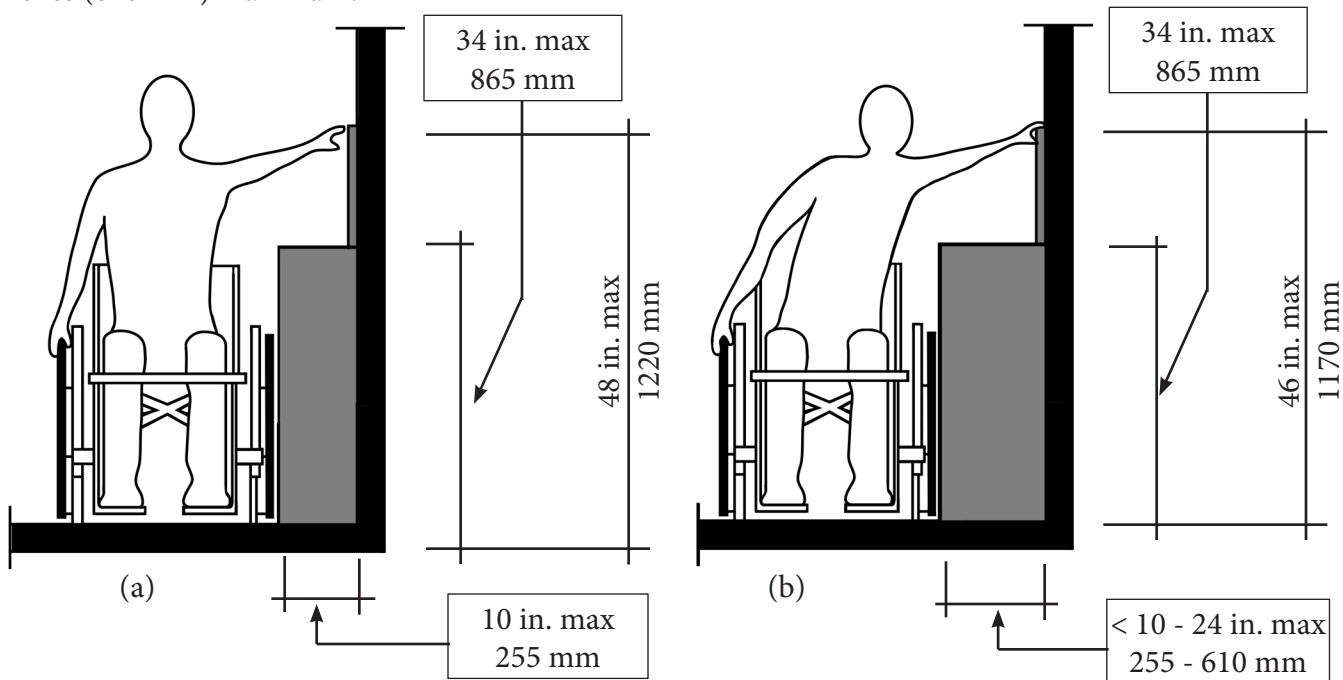
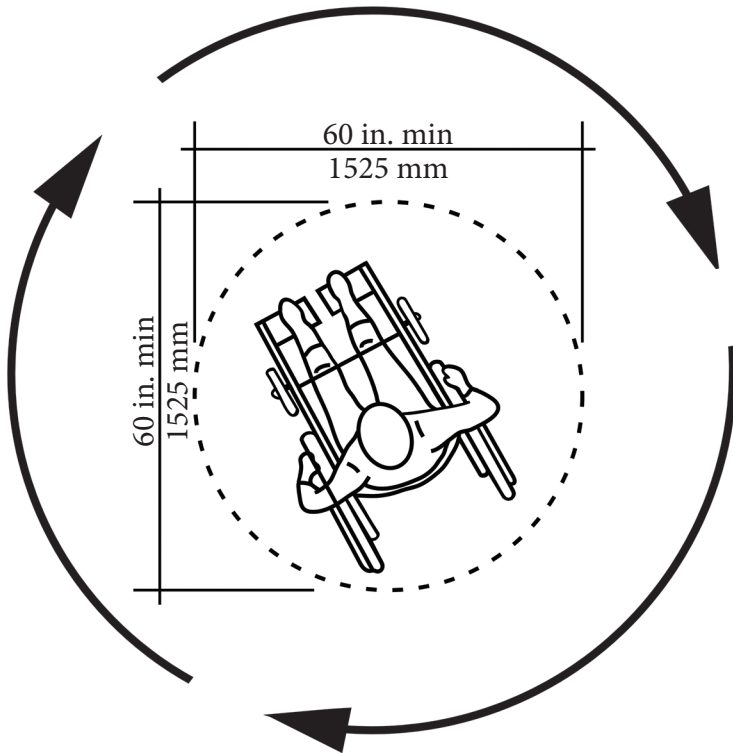
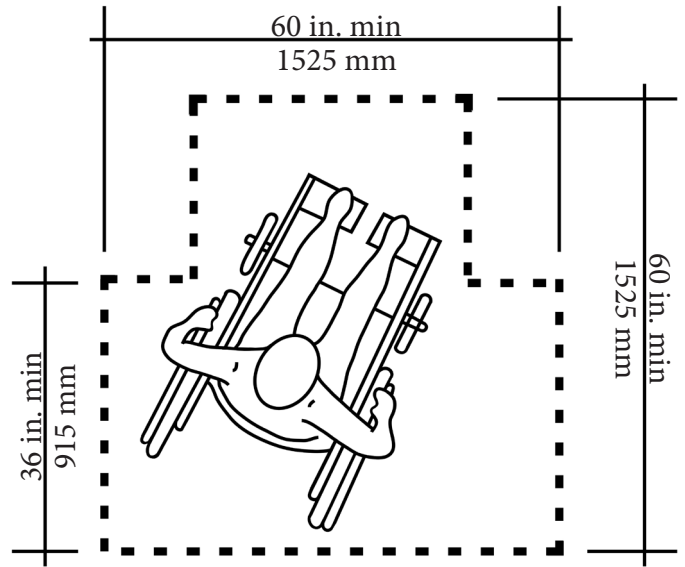


Figure 3.8.3.2 Obstructed High Side Reach

4.2.3 Wheelchair Turning Space. The space required for a wheelchair to make a 360-degree turn is a clear floor space of 60 inches (1525 mm). For a T-shaped turn, the required clear floor space is 60 inches (1525 mm) by 36 inches (915 mm) as illustrated below.



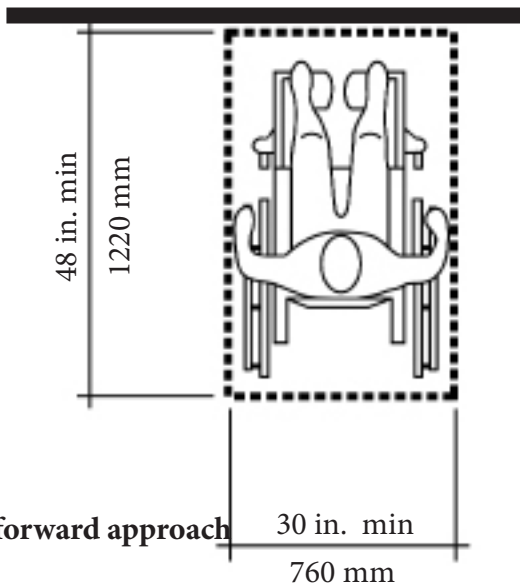
4.2.3a Wheelchair Turning Space for a 360° Turn



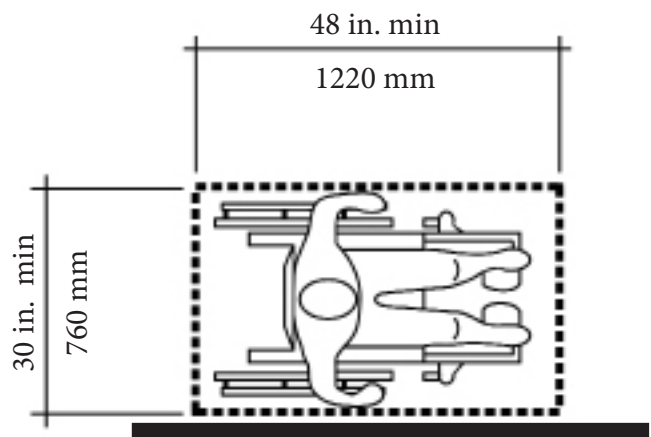
4.2.3b Wheelchair Turning Space for a 180° Turn

4.2.4 Clear Floor or Ground Space for Wheelchairs.

4.2.4.1 Size and Approach. The minimum clear floor or ground space required to accommodate a single, stationary wheelchair and occupant is 30 inches by 48 inches (760 mm by 1220 mm). The minimum clear floor or ground space for wheelchairs may be positioned for forward or parallel approach to an object. Clear floor or ground space for wheelchairs may be part of the knee space required under some objects.



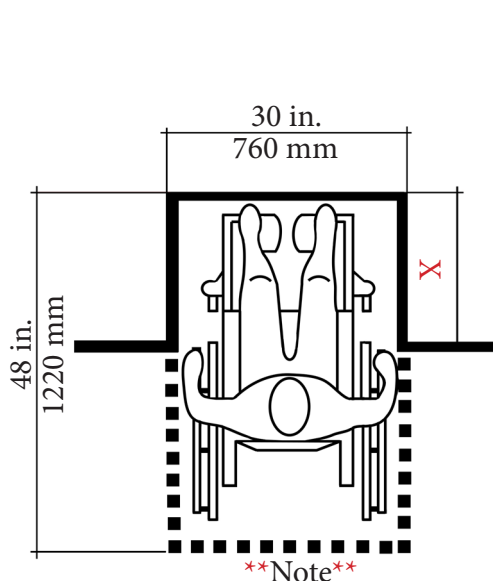
4.2.4.1a forward approach 30 in. min 760 mm



4.2.4.1b parallel approach

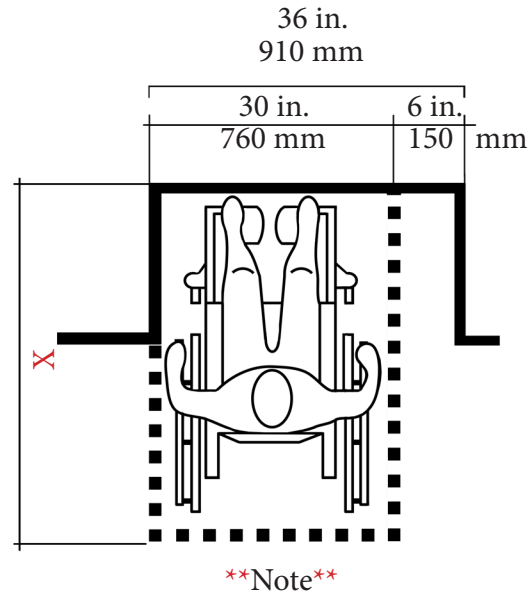
4.2.4.2 Relationship Maneuvering Clearance to Wheelchair Spaces. One full unobstructed side of the clear

ground or floor space for a wheel chair shall adjoin or overlap an accessible route or adjoin another wheelchair clear floor space. If a clear floor space is located in an alcove or otherwise confined on all or part of three sides, additional maneuvering clearances shall be provided.



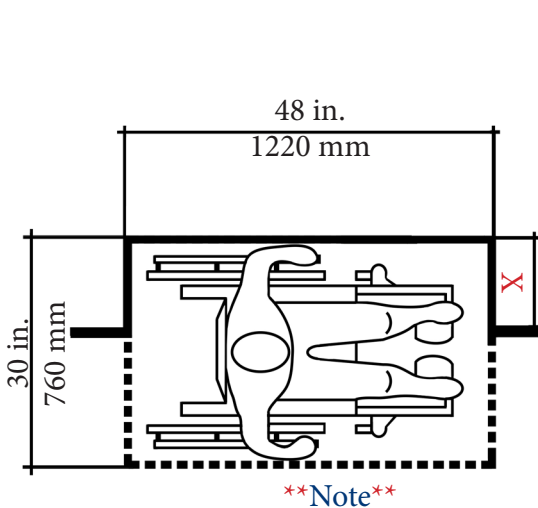
****Note****
 $X < 24 \text{ in. (610 mm)}$

4.2.4.2 a For a front approach, where the depth of the alcove is equal or less than 24 inches (610 mm), the required clear floor space is 30 inches by 48 inches (760 mm by 1220 mm).



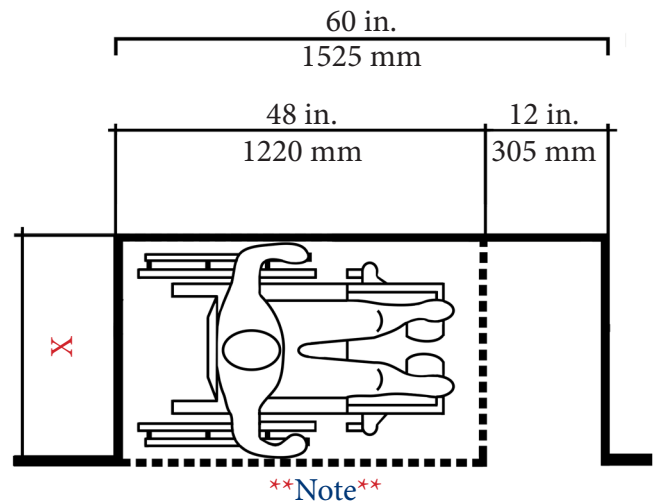
****Note****
 $X > 24 \text{ in. (610 mm)}$ then an additional 6 in. (150 mm) shall be provided as shown.

4.2.4.2b For a front approach, where the depth of the alcove is greater than 24 inches (610 mm), then in addition to the 30-inch (760 mm) width, a maneuvering clearance of 6 inches (150 mm) in width is required.



****Note****
 $X < 15 \text{ in. (380 mm)}$

4.2.4.2c For a side approach, where the depth of the alcove is equal to or less than 15 inches (380 mm), the required clear floor space is 30 inches by 48 inches (760 mm by 1220 mm).



****Note****
 $X > 15 \text{ in. (380 mm)}$, then an additional maneuvering clearance of 12 in. (305 mm) shall be provided as shown.

4.2.4.2d For a side approach, where the depth of the alcove is greater than 15 inches (380 mm), then in addition to the 48-inch (1220 mm) length, an additional maneuvering clearance of 12 in. (350 mm) is required.

4.34 Automated Teller Machines.

4.34.1 General. Each automated teller machine required to be accessible by 4.1.3 shall be on an accessible route and shall comply with 4.34.

4.34.2 Clear Floor Space. The automated teller machine shall be located so that clear floor space complying with 4.2.4 is provided to allow a person using a wheelchair to make a forward approach, a parallel approach, or both, to the machine.

4.34.3 Reach Ranges.

(1) Forward Approach Only. If only a forward approach is possible, operable parts of all controls shall be placed within the forward reach range specified in 4.2.5.

(2) Parallel Approach Only. If only a parallel approach is possible, operable parts of controls shall be placed as follows:

(a) Reach Depth Not More Than 10 in (255 mm). Where the reach depth to the operable parts of all controls as measured from the vertical plane perpendicular to the edge of the unobstructed clear floor space at the farthest protrusion of the automated teller machine or surround is not more than 10 in (255 mm), the maximum height above the finished floor or grade shall be 54 in (1370 mm).

(b) Reach Depth More Than 10 in (255 mm). Where the reach depth to the operable parts of any control as measured from the vertical plane perpendicular to the edge of the unobstructed clear floor space at the farthest protrusion of the automated teller machine or surround is more than 10 in (255 mm), the maximum height above the finished floor or grade shall be as follows:

Reach Depth		Maximum Height	
10 in.	255 mm	54 in.	1370 mm
11 in.	280 mm	53.5 in.	1360 mm
12 in.	305 mm	53 in.	1345 mm
13 in.	330 mm	52.5 in.	1335 mm
14 in.	355 mm	51.5 in.	1310 mm
15 in.	380 mm	51 in.	1295 mm
16 in.	405 mm	50.5 in.	1285 mm
17 in.	430 mm	50 in.	1270 mm
18 in.	455 mm	49.5 in.	1255 mm
19 in.	485 mm	49 in.	1245 mm
20 in.	510 mm	48.5 in.	1230 mm
21 in.	535 mm	47.5 in.	1205 mm
22 in.	560 mm	47 in.	1195 mm
23 in.	585 mm	46.5 in.	1180 mm
24 in.	610 mm	46 in.	1170 mm

(3) Forward and Parallel Approach. If both a forward and parallel approach are possible, operable parts of controls shall be placed within at least one of the reach ranges in paragraph (1) or (2) of this

section.

(4) Bins. Where bins are provided for envelopes, waste paper, or other purposes, at least one of each type provided shall comply with the applicable reach ranges in paragraph (1), (2), or (3) of this section.

Exception:

Where a function can be performed in a substantially equivalent manner by using an alternate control, only one of the controls needed to perform that function is required to comply with this section. If the controls are identified by tactile markings, such markings shall be provided on both controls.

4.34.4 Controls. Controls for user activation shall comply with 4.74.4.

4.34.5 Equipment for Persons with Vision Impairments. Instructions and all information for use shall be made accessible to and independently usable by persons with vision impairments.

(20) Where Automated Teller Machines (ATMs) are provided, each ATM shall comply with the requirements in 4.34 except where two or more are provided at a location, then only one ATM must comply.

Exception:

Drive-up only ATMs are not required to comply with **4.27 Controls and Operating Mechanisms** or **4.34.4 Reach Ranges**.