

NMD 50/100 PACKAGING INSTRUCTIONS



NMD-50



NMD100

©2022 Triton Systems of Delaware, LLC. All Rights Reserved. ATMGurus[®], the ATMGurus logo and tagline, Triton[®], and the Triton logo are all registered trademarks of Triton Systems of Delaware, LLC. The third party trademarks that may be identified herein are the trademark of their respective owners. Triton disclaims any affiliation, connection, or association between its products and services, and those of the respective trademark owners, or any sponsorship or approval of its products and services by such trademark owners.

REVISION HISTORY

| ECO | Revision | Date | Description |
|---------|----------|-----------|--|
| 1028463 | A | 6/14/2012 | Original |
| 1030278 | B | 7/17/2015 | Add Double Wall Cardboard to NMD 100 Packing. |
| 1032628 | C | 9/21/2022 | Change cover page for less printer ink. Update and add more images. Added additional text for both NMD Dispensers for clarity. |
| | | | |

Contact Information

Triton©
21405 B Street
Long Beach, MS 39560 USA
1 (866) 787-4866 (opt 3) or +1 (228) 575-3100 (opt 3)
(228) 575-3101 (fax)
CSS@triton.com
techsupport@triton.com

PURPOSE

This guide covers repackaging the NMD 50 and NMD100 in return boxes.

SCOPE

This manual applies to all service personnel involved in installing, configuring, or upgrading Triton NMD dispenser nationwide.

APPLICATION

This configuration guide provides easy-to-follow instructions for packaging the dispensers for a safe return to Triton.

****NOTE****

Follow these instructions carefully to repackage NMD dispensers for return to Triton. All necessary parts are included in shipment including inner and outer boxes, upper and lower foam padding and foam corner panels.

****NOTE****

If returning the NMD dispenser for a warranty claim, remove the cassette(s) and reject cassette from the dispenser and box in a separate carton.

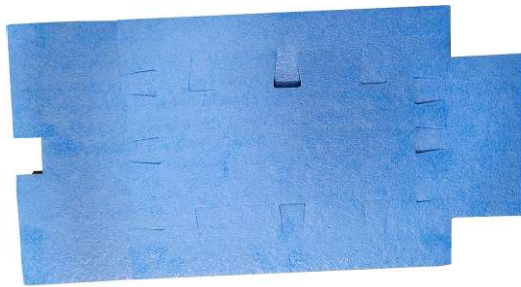
PARTS AND TOOLS

| | |
|---|--|
| TOOLS REQUIRED | Packing tape (not supplied in kit/user provided) |
| KIT 06300-00050 (NMD 50 Packaging) KIT 06300-00100 (NMD 100 Packaging) | Boxes, foam padding and inserts all used to pack NMD 100 and NMD 50 dispensers for return to Triton. |
| T-10 Torx driver | Remove screws from Extension |
| Painters tape | Secure wires to Bundle Output Unit |

Packing NMD50 Dispenser

KIT 06300-00050 (NMD 50 Packaging)

| Items in Kit | Description | Quantity |
|--------------|--|----------|
| 1 | Insert, foam bottom NMD-50 | 1 |
| 2 | Insert, foam 2 inch thick corners NMD-50 - X12 | 12 |
| 3 | NMD-50 Inner 21 ¾ X 14 ½ X 19 48 ECT B/C | 1 |
| 4 | Carton, NMD-50 Outer 26 1/8 X 18 7/8 X 23 3/4 48 | 1 |



1



2



3



4

Open packing kit and lay items out in an open area. Proceed through the following steps to properly package the NMD 50 dispenser for return to Triton.

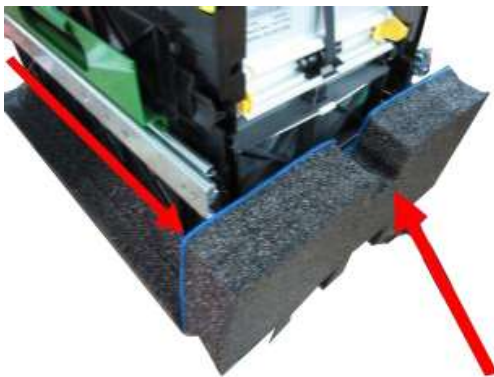
1. Open inner box (**Item 3**) and fold short tabs in, then long tabs over short tabs. Tape two (2) to three (3) runs across long seam of box.



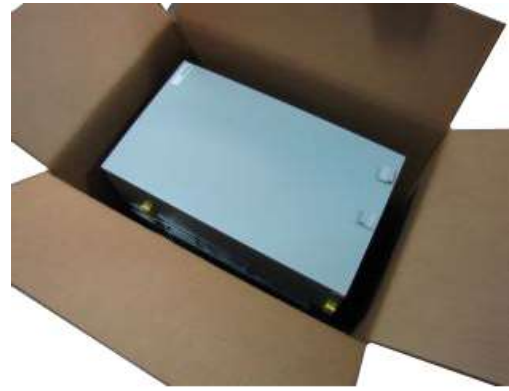
2. Locate foam bottom (**Item 1**) and fold sides in with blue sides forming a well to hold NMD dispenser.



3. Lower NMD dispenser into well of foam bottom making certain all sides are firm against dispenser. Verify the foam notch is against the rear of the dispenser to keep the slides from opening during shipment.



4. Lower foam bottom with dispenser into inner box.



5. Acquire four gray foam corners (**Item 2**) and separate into individual pieces. Fold and place the foam corners, on all four corners of dispenser around top of box.



6. Fold short flaps in on top of corners. Fold longer flaps in over short flaps. Seal with two (2) to three (3) runs of packing tape across long top seam of box.
7. Open outer box (**Item 4**) to shape. Fold short tabs in. Fold longer tabs over short, but **DO NOT TAPE**. Once sides are folded, flip box over.



8. Place inner box inside outer box.
9. Acquire four gray foam corners (**Item 2**) and separate into individual pieces. Fold and place the foam corners, on all four corners of the inner box, (**Image Below**).



11. Gently turn box over.
12. Acquire four gray foam corners (**Item 2**) and separate into individual pieces. Fold and place the foam corners, on all four corners of the inner box.



10. Fold shorter tabs in. Fold longer tabs over short. Tape long seam with two (2) to three (3) runs of packing tape.



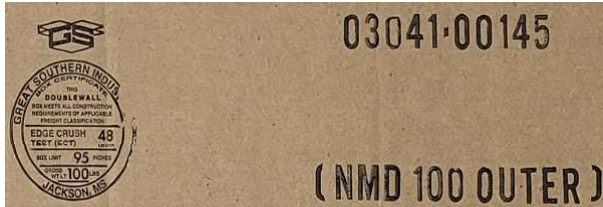
13. Fold in short tabs of box. Fold longer tabs over short and tape long seam with two (2) to three (3) runs of packing tape.



End of NMD50 Packaging

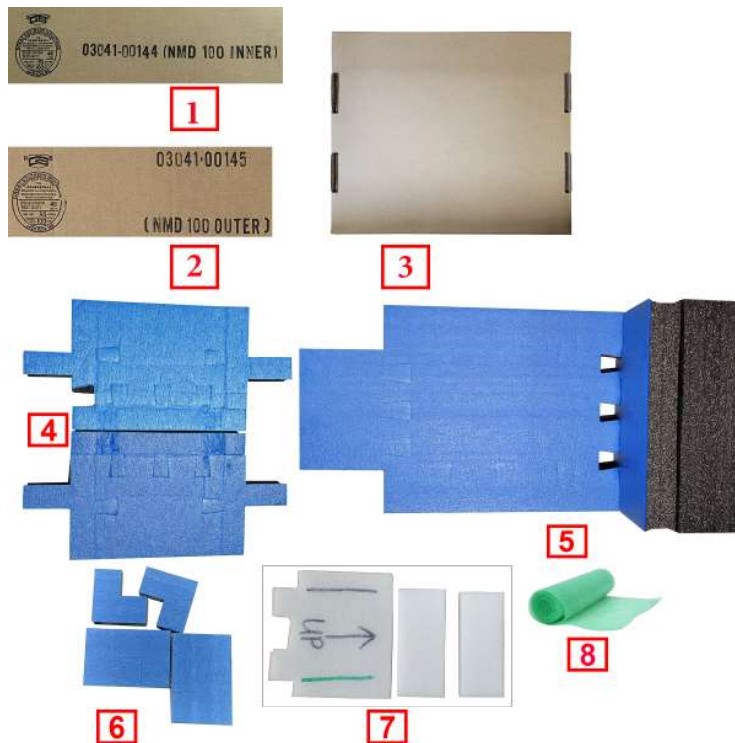
Packing NMD100 Dispenser

1. Set the packing box with the markings on the bottom, *Left image*. Cut the packing tape not the cardboard box. Open the box and cut the tape securing the inner box. Remove the contents of the inner box. Separate foam items and instruction. The small cardboard tray will be needed first.



KIT 06300-00100 (NMD 100 Packaging)

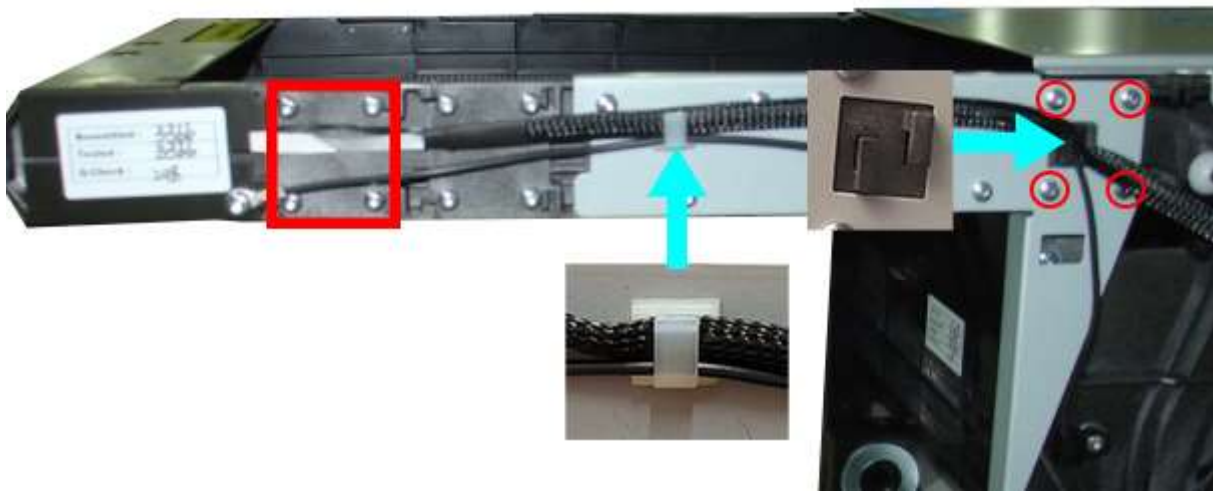
| Items in kit | Description | Quantity |
|--------------|---|----------|
| 1 | Carton, NMD-100 Inner 26 ¼ X 15 ½ X 27 ¼ 48 ECT B/C | 1 |
| 2 | Carton, NMD-100 Outer 29 1/8 X 18 3/8 X 31 48 ECT B/C RSC | 1 |
| 3 | Insert, Tray NMD-100 Top 32 ECT C | 1 |
| 4 | Insert, Foam Top NMD-100 | 1 |
| 5 | Insert, Foam Bottom NMD-100 with attached Foam Block 4 X 7 X 15 ½ | 1 |
| 6 | Insert, Foam 1 ½ inch thick corners NMD-100 X | 8 |
| 7 | Instructions, 3-cutout white foam | 1 |
| 8 | Green Bubble wrap | 1-roll |



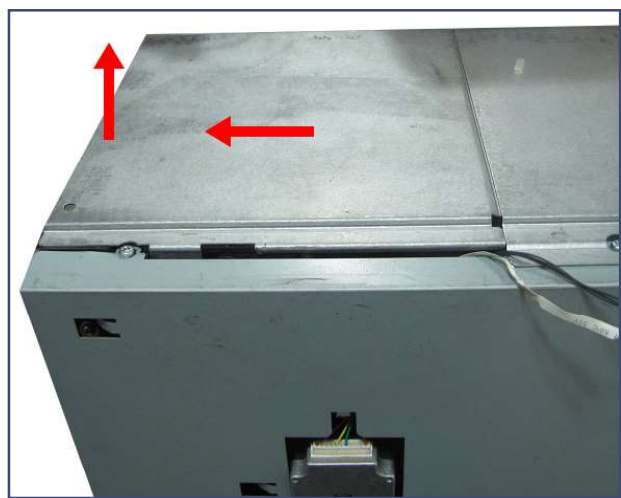
Caution

- DO NOT disconnect the wires connecting the Bundle Output Unit (BOU) to the dispenser.
- DO NOT damage or place tension on the wires when disassembling the BOU and extension from the dispenser.

2. If the NMD dispenser is equipped with a 5 or 10 inch extension, remove the braided and ground cables from the two clamps, **Blue** arrows. Use a T-10 torx screwdriver to remove four screws from blocks **RED** rectangle, and the four on other side. Set BOU in cardboard tray (**Item 3**) next to dispenser.
3. Remove four screws from plate (**RED** Circles) and the four screws from the plate on the other side. Remove remaining screws (4 or 6, depending on extension length) securing metal bracket to extension blocks on both sides. Cut a piece of green bubble wrap (**Item 8**) and wrap around the screws, brackets, and extension. Tape securely, so screws do not fall out.

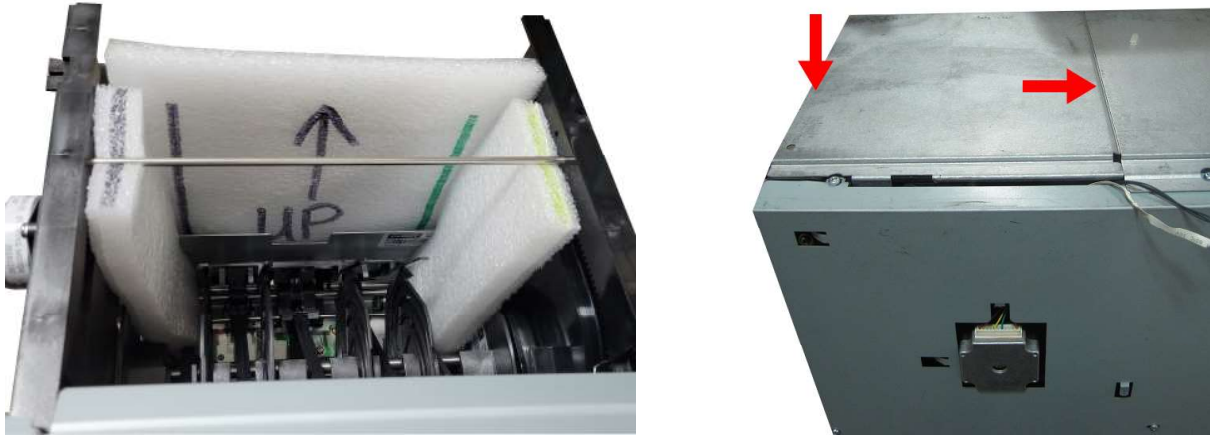


4. On the BOU, use painters tape to secure the flat wire to side of BOU to prevent it from being cut during shipment. Tape the wires against the extension, (*Left Image*). Place BOU in the cardboard tray, from step 1, and set on top of dispenser to prevent disconnecting the two wires from dispenser or BOU.
5. Remove the top back panel by sliding it back and lifting it up, (*Right Image*).



6. Place the 3-piece foam **Item 7**, around the BCU as shown below, *Left image*. DO NOT force the rectangle foam mark with black and green on the ends onto the BCU finger, but place between the fingers. Match the foam colors Black to Black and Green to Green as in the Left image.

7. Replace the top back panel by sliding it back and lowering in place, (*Right Image*).



8. Fold the 3-sides on (**Item 5**) foam and insert into inner box.

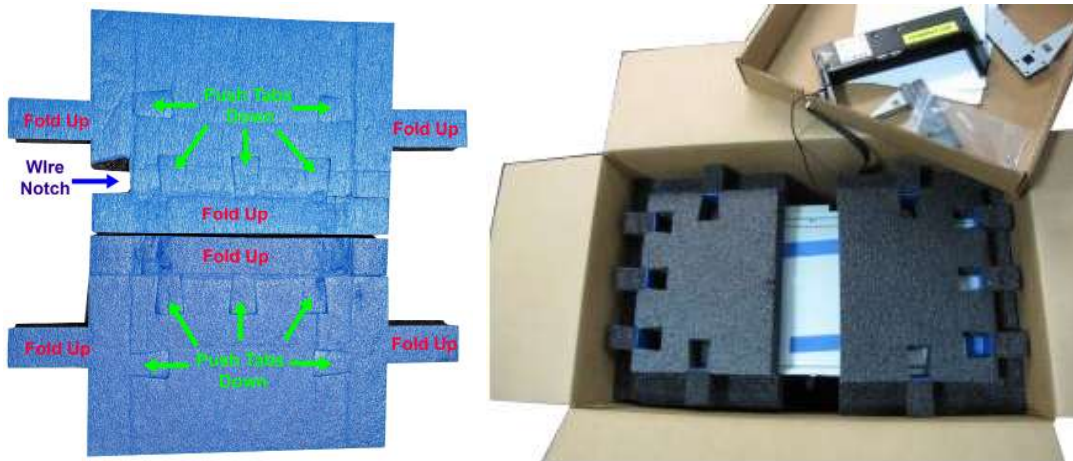


9. Step 10 requires 2-persons to lift dispenser.

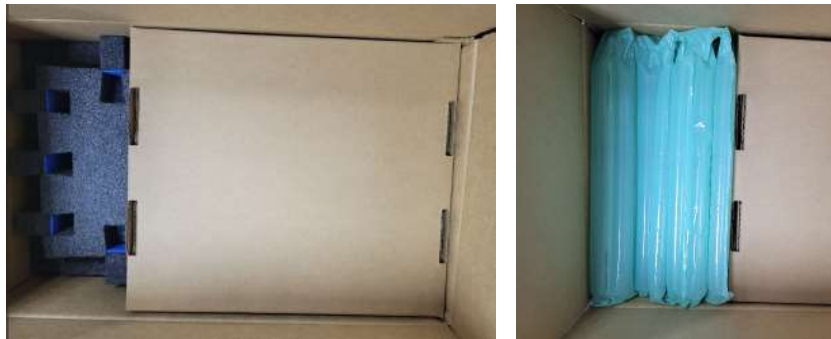
10. With the cardboard tray on top, grasp the handle at top front, *Left image*. Grasp the drive motor at back of dispenser, *Center image*. Lift NMD 100. Gently lower dispenser into box and into foam bottom. The green handle on same side as the foam block, yellow arrow, *Right image*.



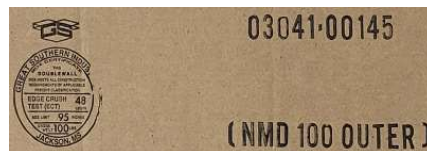
11. Fold, (**Item 4**), 3-sides up, *Left image*, and place one folded foam over the top of each end of the dispenser. *Right image*. Note the cardboard tray. Be CAREFUL NOT to pull the wires out of the dispenser or BOU. If the wire is too short, verify the wire passes through the notch in the foam or cut small notch.



12. Wrap a piece of green bubble wrap (**Item-8**) around the BOU and tape close. Place the BOU and brackets on top of the foam. Turn the tray over to cover the both green bundles. Fit tray so it does not interfere with the closing of the box, *Left image*. Fill open space with the remaining bubble wrap, *Right image*.



13. Fold the inner box's short side close, then fold the long side close and tape along the long crease with two (2) to three (3) runs of packing tape.
14. If the outer box arrived assembled, cut the tape only on the close end of the box. You should see through the box. Locate the box side with the stamp [NMD 100 Outer]. Fold the short tabs in and long tabs over the short, but DO NOT TAPE. Flip box leaving open end on top.



15. Insert sealed inner box into outer box and center as well as possible. Fold four (4) (**item-6**) corner foam pads, *Left image*. Place pads on all four corners of box correctly, *Center image*. *Right image*, is not correct.



16. Fold short flaps in and long flaps over short. Seal long crease with two (2) to three (3) runs of packing tape, *Left image*. Gently flip box containing NMD.

17. Insert remaining four foam corners around inner box, *Right image*.



18. Fold short tab in. Fold long tab over short. Seal along crease with two (2) to three (3) runs of packing tape.



19. Carefully flip box.

END OF NMD100 PROCEDURE.